



Request licences

FAQ No.0002

Part	Version	Revision	Date	Status
en	3.5.4.10	001	2019-01-01	Released

Content

Purpose of this document.....	2
CoDeSys Control RTE.....	2
COMBIVIS studio HMI runtime.....	7
Disclaimer	9

Purpose of this document

With this short manual a KEB customer should become able to request a hardware-specific license file for his bought software products. (CoDeSys Control RTE PLC Runtime and / or COMBIVIS studio HMI). Up to the point when the license is installed to the system, the connected software will run in a time limited demo mode and stop operating after a while (30 minutes).

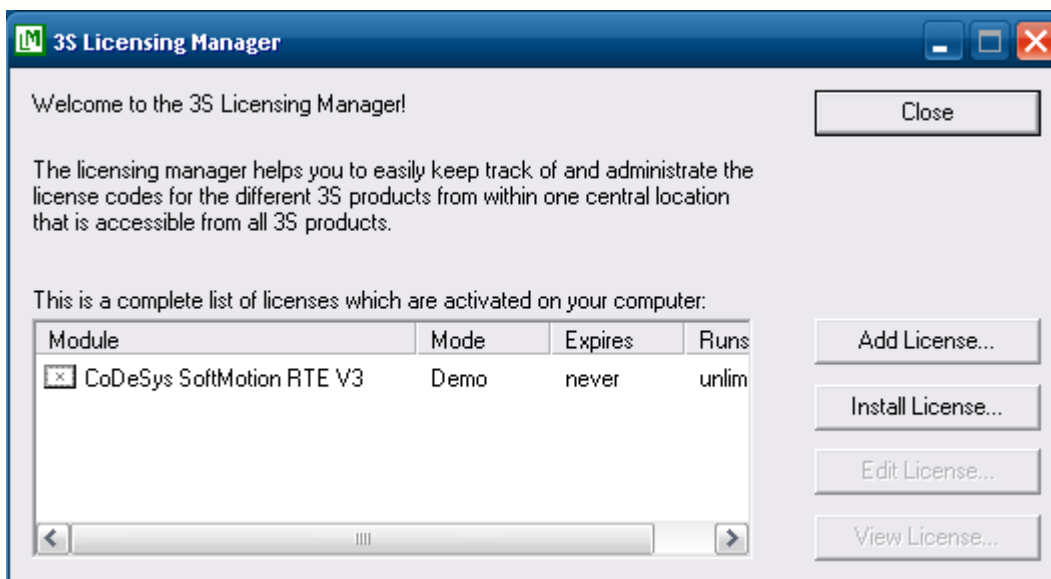
CoDeSys Control RTE

Follow these steps to generate a license request file for your SoftPLC installation:

Start the 3S Licensing Manager located at Start → All Programs → 3S CoDeSys → Licensing Manager.



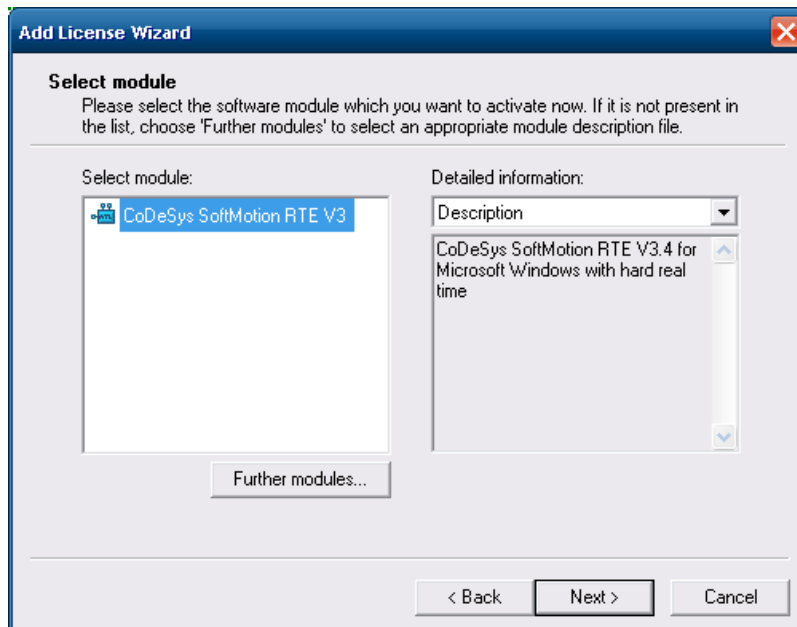
Select the CoDeSys product to request a license for; usually the only listed entry is “CoDeSys Control RTE V3.4” / “CoDeSys SoftMotion RTE V3” (depending on the ordered product). Click the 'Add License' button.



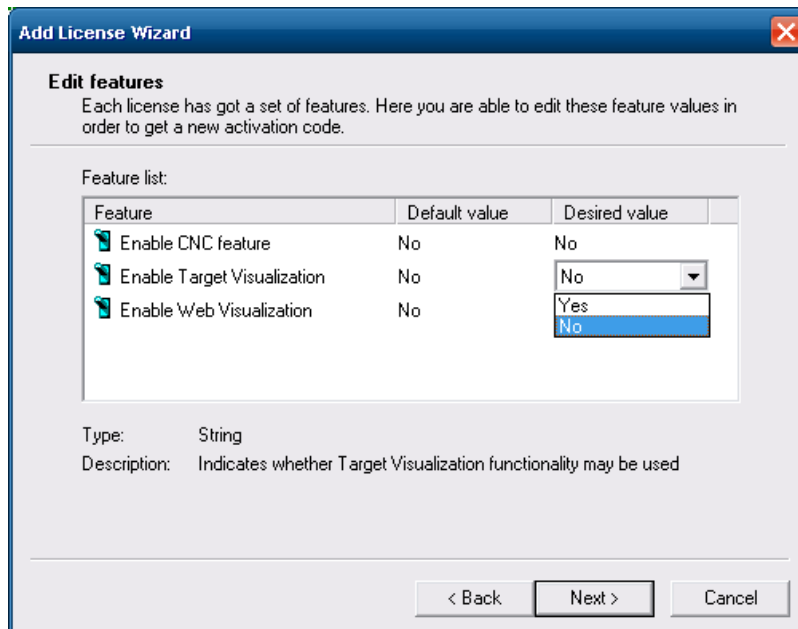
To acknowledge the introduction of the licencing tool, hit 'Next'.



In the newly appeared window click 'Next' to advance to the module selection, which usually only consists of the 'CoDeSys SP RTE' module. Select it and click 'Next'.

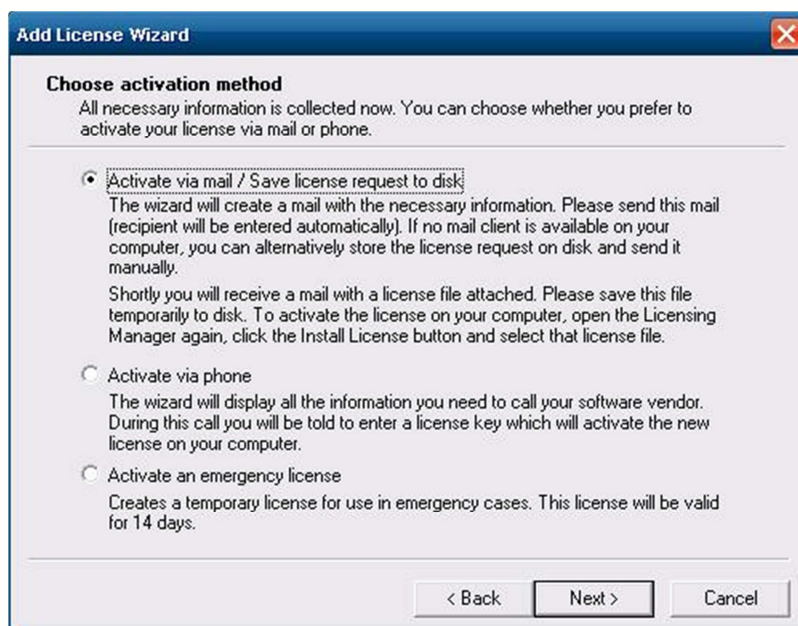


Now the features that are supposed to be activated have to be selected. Depending on whether you have ordered the SoftMotion CNC option or not, select or deselect SoftMotion CNC. Be aware that you will be charged an additional SoftMotion CNC license fee if the option was not ordered before. To select the option, double click on the 'Desired value' field in the 'Enable SoftMotion' entry and select 'yes'. Proceed with the other optional features like TargetVisu or WebVisu in the same way.



Now specify the way you want to receive the license keeping the pre-set option 'Activate via mail / save license request to disk' selected and click 'Next'.

In case of an emergency you may also select 'Activate an emergency license' here to just enable a 14-days-valid license for the selected product with the previous selected features. After that period of time you will have to install a regular, valid license file in order to keep the product runnable.



In the next dialogue you have to enter your personal company data. You may enter the KEB Customer ID 'D100278' shown below or check the 'I have not been assigned a customer ID yet' check box.



Add License Wizard

Enter customer information
To complete your license request, please enter some information about you. Please note that those fields marked with an asterisk (*) are mandatory.

Company*: KEB - Karl E. Brinkmann GmbH
 Name*: KEB
 Address:
 Phone:
 Fax:
 Mail*: info@keb.de
 Customer ID*: D100278
 I have not been assigned a customer ID yet.

< Back Next > Cancel

Finally you have to select a location to store the request-file to. Select 'Save to disk' and enter a path and file name. It is recommended to use the format

C:\[YourCoDeSysLicenseStickerNumber].3sr



Add License Wizard

Finish license request via mail.



Send mail
 Save to disk:
 c:/myNumber.req ...

Click Finish to create the license request mail/file and to close this wizard.

< Back Finish Cancel

FAQ C6 IPC



Copy the **request file** to an USB mass storage and email it together with your **CompactFlash® card's serial number** (find it right below the KEB part number on the CF card nameplate, e.g. '301845872' in the example shown below) and your **IPC hardware serial number** (you find a sample below, too) to

licence@keb.de



Sample CF card nameplate with serial number



Sample IPC hardware nameplate, SerialNo here "0AI7J2GY00009"

You will receive the license file in reply, named

3S_[YourCoDeSysLicenseStickerNumber]-KEB_[KEB CF SerialNumber].3sl.

With the license file available you may now complete the licencing of your software product. If it is not still running, start the license manager again and select CoDeSys SP RTE 3. Click the 'Install License' button.

Select the license file you received from KEB.

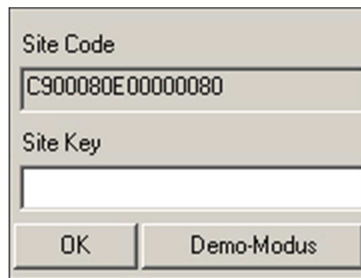
The license type should now have changed from 'Demo' to 'Licensed' and you may now use the runtime without any restrictions.

COMBIVIS studio HMI runtime

There do exist two option for activating you copy of the COMBIVIS studio HMI runtime. If you already have a COMBIVIS studio HMI project, simply transfer it to the target and start it. If your runtime copy is not licensed yet you will be prompted for a site key. (see screenshot below)

If you do not possess a COMBIVIS studio HMI project, you can create one on the target: Run COMBIVIS studio HMI on the target you want to activate the licence on. You can start it from the start menu (Start → Programs → KEB → COMBIVIS studio HMI 4.0 → COMBIVIS studio HMI 4.0). Create a new project, select "Win32 Platform" and click on the button "Open". Click on the "Next" button 3 times, after then click on the "Finish" button.

Select the menu Edit->Check License needs". You will see a mask in which is shown the "Site Code"



Take the "Site Code" and email it together with your **CompactFlash® card's serial number** (find it right below the KEB part number on the CF card nameplate, e.g. '301845872' in the example shown below) and your **IPC hardware serial number** (you find a sample below, too) to

licence@keb.de



Sample CF card nameplate with serial number

FAQ C6 IPC



Sample IPC hardware nameplate, SerialNo here "0AI7J2GY00009"

licence@keb.de

You will receive in reply the 'Site Key' which is to be inserted into the same mask then the Site Code was shown in. Confirm by clicking 'OK'.

COMBIVIS studio HMI runtime should now be usable without displaying the remark of the demo mode / Site Code.

Disclaimer

KEB Automation KG reserves the right to change/adapt specifications and technical data without prior notification. The safety and warning reference specified in this manual is not exhaustive. Although the manual and the information contained in it is made with care, KEB does not accept responsibility for misprint or other errors or resulting damages. The marks and product names are trademarks or registered trademarks of the respective title owners.

The information contained in the technical documentation, as well as any user-specific advice in verbal or in written form are made to the best of our knowledge and information about the application. However, they are considered for information only without responsibility. This also applies to any violation of industrial property rights of a third-party.

Inspection of our units in view of their suitability for the intended use must be done generally by the user. Inspections are particularly necessary, if changes are executed, which serve for the further development or adaptation of our products to the applications (hardware, software or download lists). Inspections must be repeated completely, even if only parts of hardware, software or download lists are modified.

Application and use of our units in the target products is outside of our control and therefore lies exclusively in the area of responsibility of the user.

KEB Automation KG
Südstraße 38 • D-32683 Barntrup
fon: +49 5263 401-0 • fax: +49 5263 401-116
net: www.keb.de • mail: info@keb.de