



Create offline bootapplication

FAQ No.0003

Part	Version	Revision	Date	Status
en	6.2.3.0	001	2019-01-01	Released

Content

General	2
Boot application for C6 Compact/ H6 Control Unit.....	2
Boot application for IPC.....	3
Disclaimer	4

FAQ COMBIVIS studio 6



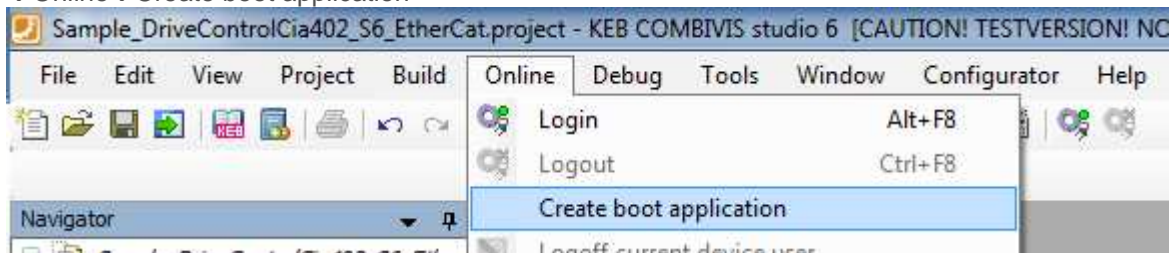
General

This is a description of how to handle an offline created boot application.

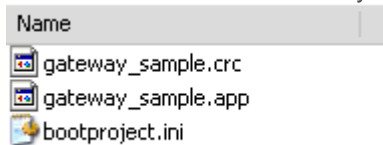
Boot application for C6 Compact/ H6 Control Unit

A boot application can be created offline by clicking on the menu

→Online→Create boot application



Save the files somewhere on your harddisk



Create an additional file, called **bootproject.ini**:

This file has to contain exactly the name of the application. The name must not be longer than 80 characters.



Transfer all files to the control flash memory (directory "c:")

Bootproject.ini will be deleted automatically, when the boot application is loaded the first time.

FAQ COMBIVIS studio 6



Boot application for IPC

Copy the project data file (.ini, .app, .crc, .ret) into folder C:\Program Files\3S CoDeSys\CoDeSys SP RTE3.

Copy the images for target visualization (.bmp, .jpg) into folder C:\Program Files\3S CoDeSys\CoDeSys SP RTE3\visu.

Open the data file CoDeSysSP.cfg under C:\Program Files\3S CoDeSys\CoDeSys SP RTE3 and register the marking text in the data file. **MyApplication** is an example and must be replaced by your project name.

```
[CmpApp]
Bootproject.CreateOnDownload=0
Application.1=MyApplication
Application.2=MyApplication. Symbols
MyApplication.FirstLoadInitRetains=1
```

Shutdown or restart the windows system.

Disclaimer

KEB Automation KG reserves the right to change/adapt specifications and technical data without prior notification. The safety and warning reference specified in this manual is not exhaustive. Although the manual and the information contained in it is made with care, KEB does not accept responsibility for misprint or other errors or resulting damages. The marks and product names are trademarks or registered trademarks of the respective title owners.

The information contained in the technical documentation, as well as any user-specific advice in verbal or in written form are made to the best of our knowledge and information about the application. However, they are considered for information only without responsibility. This also applies to any violation of industrial property rights of a third-party.

Inspection of our units in view of their suitability for the intended use must be done generally by the user. Inspections are particularly necessary, if changes are executed, which serve for the further development or adaptation of our products to the applications (hardware, software or download lists). Inspections must be repeated completely, even if only parts of hardware, software or download lists are modified.

Application and use of our units in the target products is outside of our control and therefore lies exclusively in the area of responsibility of the user.

KEB Automation KG
Südstraße 38 • D-32683 Barntrup
fon: +49 5263 401-0 • fax: +49 5263 401-116
net: www.keb.de • mail: info@keb.de