



Repository cleanup and restore

FAQ No.0011

Part	Version	Revision	Date	Status
en	6.2.3.0	001	2019-01-01	Released

Content

Introduction	2
Repositories	2
Device-Repository	2
Library-Repository	3
Cleanup procedure	4
Restore procedure	5
Restore old devices	5
Restore old libraries	6
Recommendations	7
Disclaimer	8

FAQ COMBIVIS studio 6



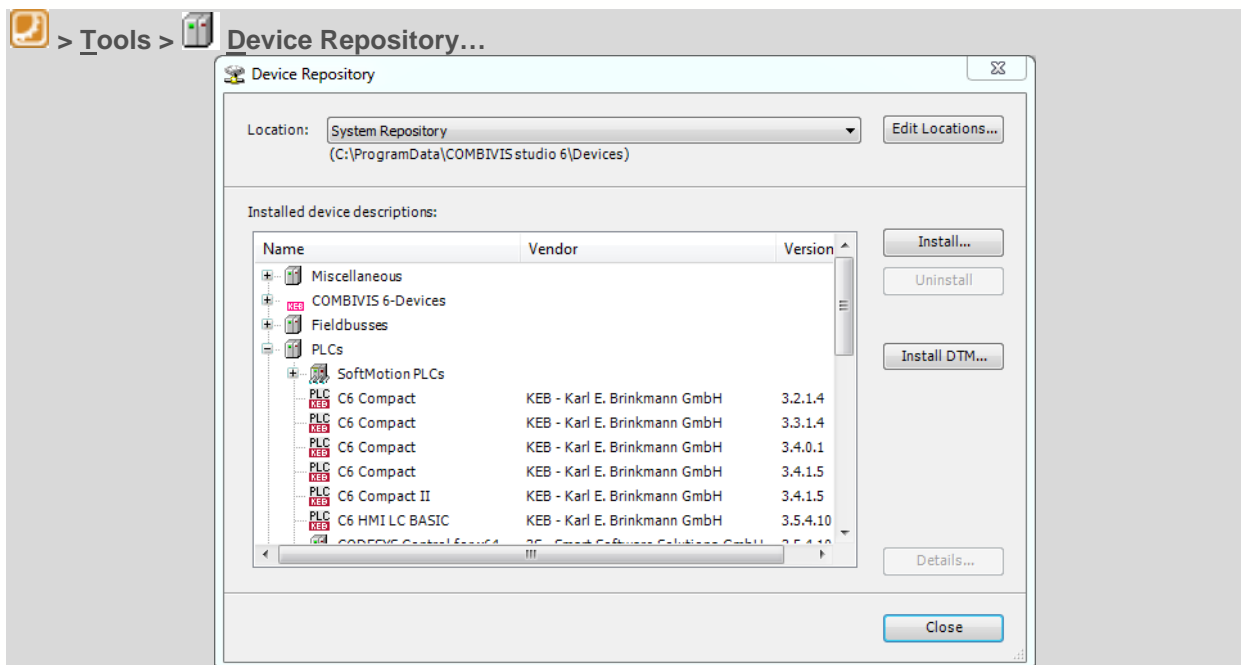
Introduction

This document describes the cleanup and restore procedure for the device and library repository installed with COMBIVIS studio 6.

Repositories

Device-Repository

The device repository is a database for all devices available on a local COMBIVIS studio 6 installation.



All local installed devices and their available versions can be checked.

> Details...

Further devices, e.g. third party fieldbus slaves, can be installed:

> Install...

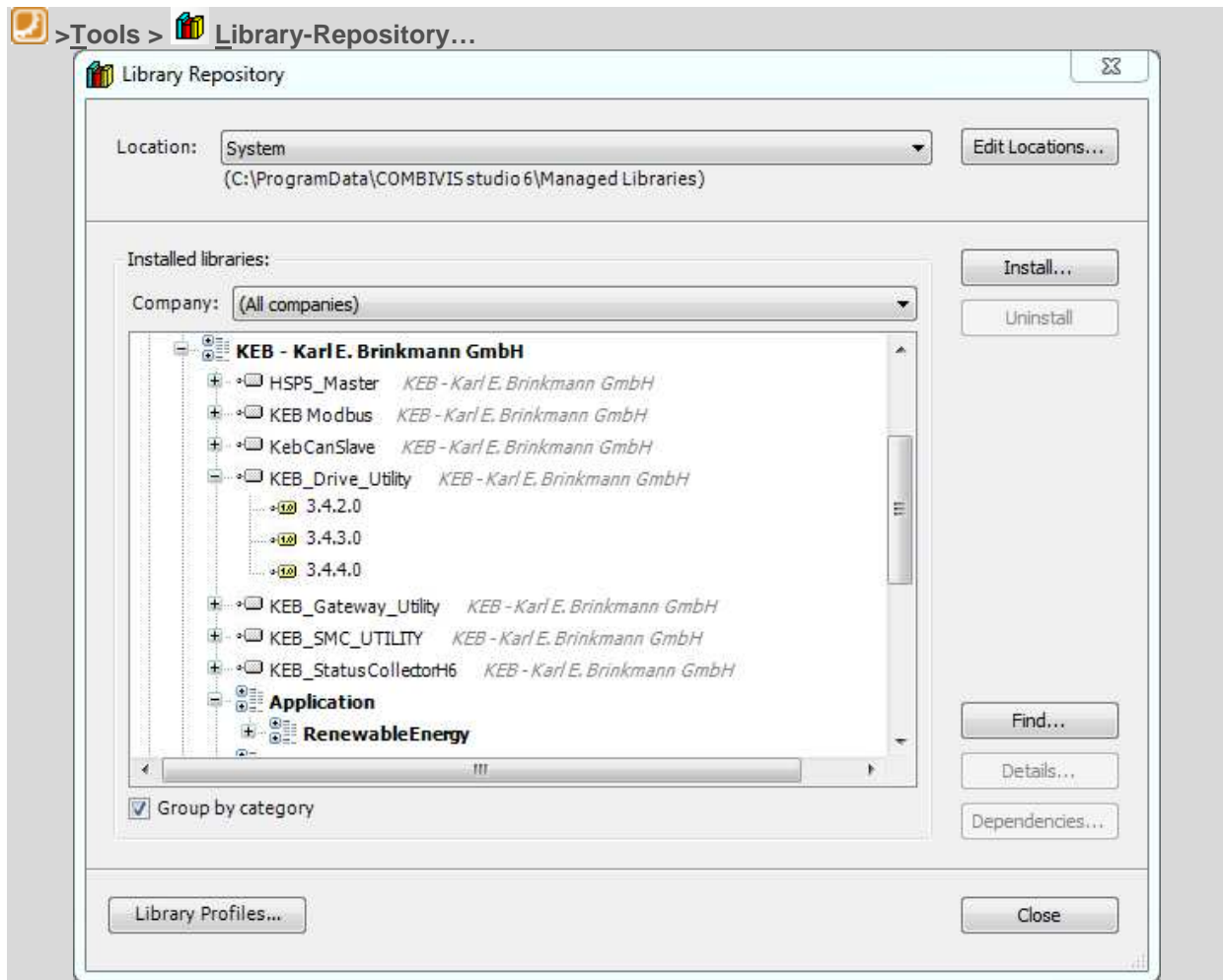
- All supported description files (*.xml;*.eds;*.dcf;*.gs?)
- Device description files (*.devdesc.xml)
- EDS and DCF files (*.eds, *.dcf)
- EtherCAT XML Device description Configuration Files (*.xml)
- Installed device descriptions (*.xml)
- IO-Link Device Description (IODD) (*IODD1.1.xml;*IODD1.0.1.xml)
- PROFIBUS DP V5.0 Configuration Files (*.gs?)
- PROFINET IO Configuration Files (GSDML*.xml)
- sercos XML Device description Files (*.xml)

FAQ COMBIVIS studio 6



Library-Repository

The library repository is a database for all libraries available on a local COMBIVIS studio 6 installation.



All local installed libraries and their available versions can be checked.

> Details...

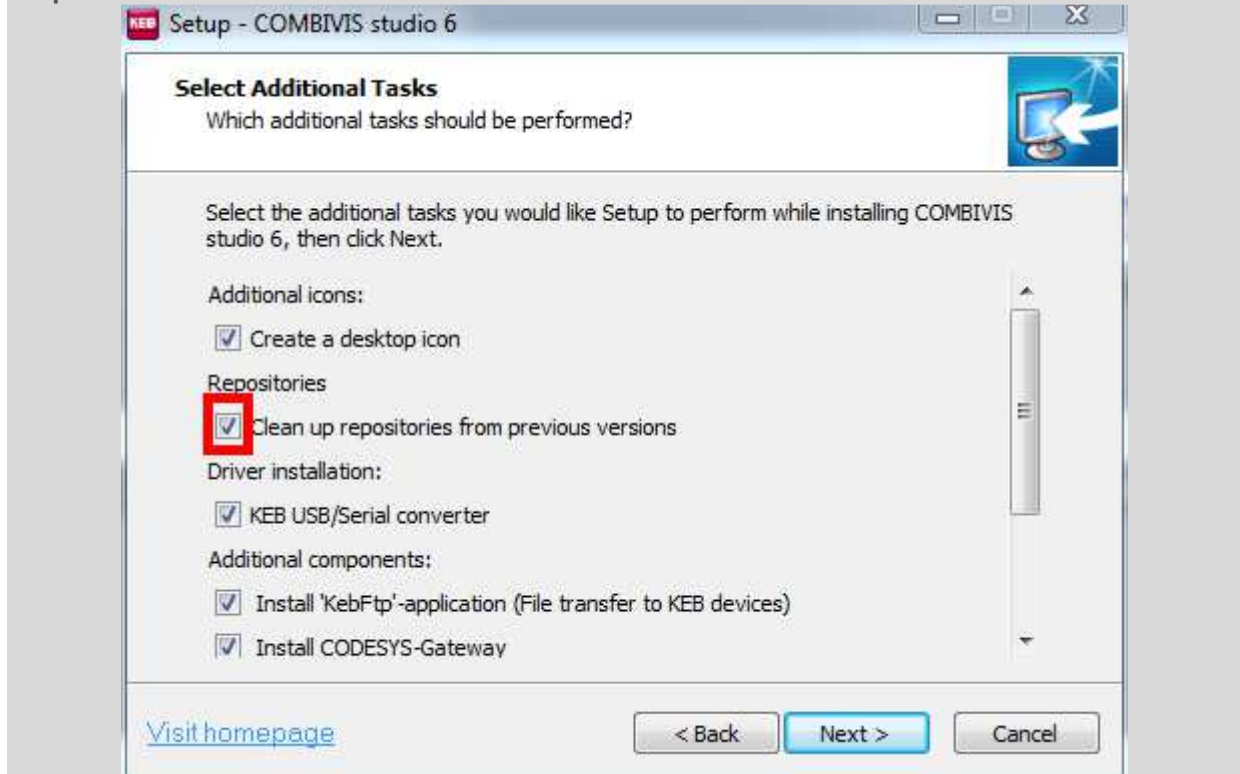
Further libraries can be installed:

> Install...

Cleanup procedure

To cleanup your local system, activate the cleanup option during COMBIVIS studio 6 installation.

Step “Select additional tasks”



- Devices and libraries from existing installation are moved to a backup folder.
- The latest devices and libraries are installed

In this way all discontinued and dispensable objects are removed.

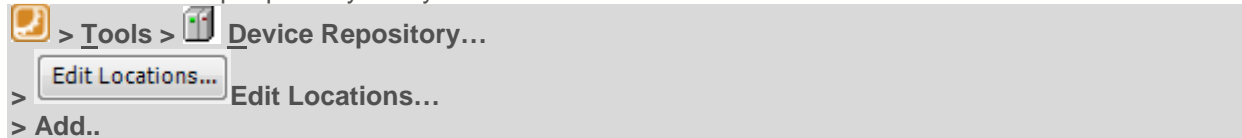
Choose this option to:

- Improve the handling performance
- Improve the repository readability
- Prevent usage of discontinued versions

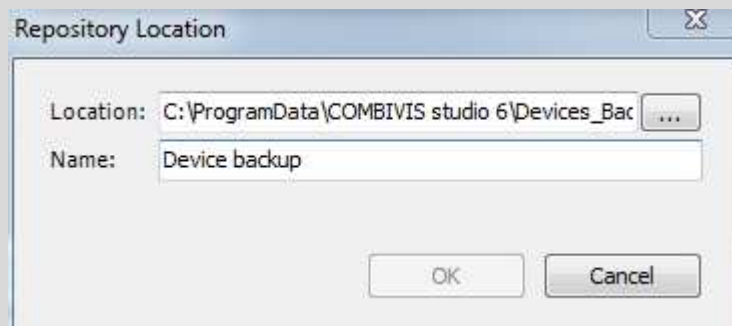
Restore procedure

Restore old devices

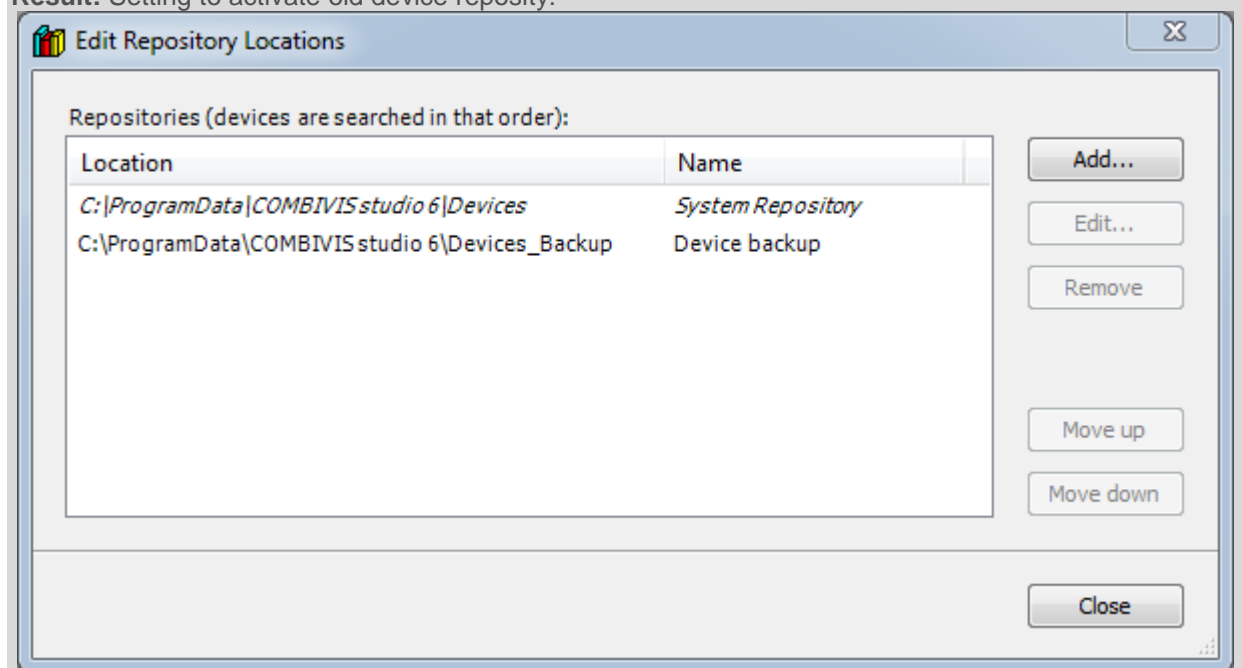
The device backup repository easily can be re-activated.



Location: C:\ProgramData\COMBIVIS studio 6\Devices_Backup
Name: Device backup



Result: Setting to activate old device repository:

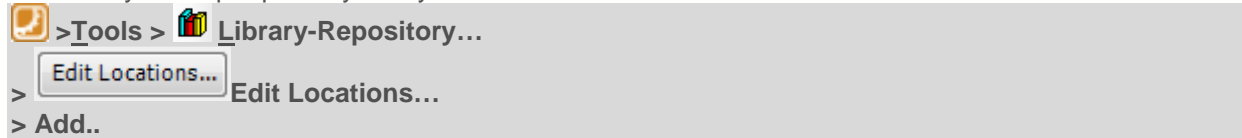


FAQ COMBIVIS studio 6

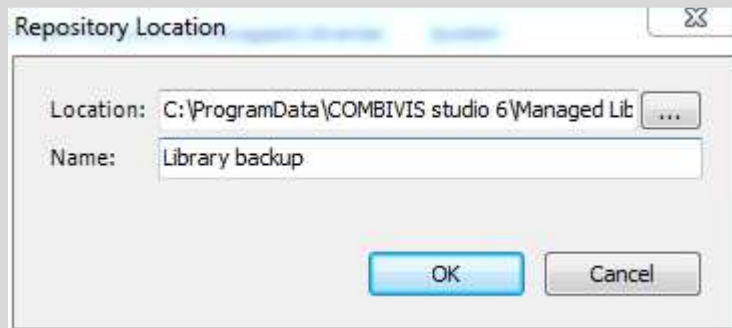


Restore old libraries

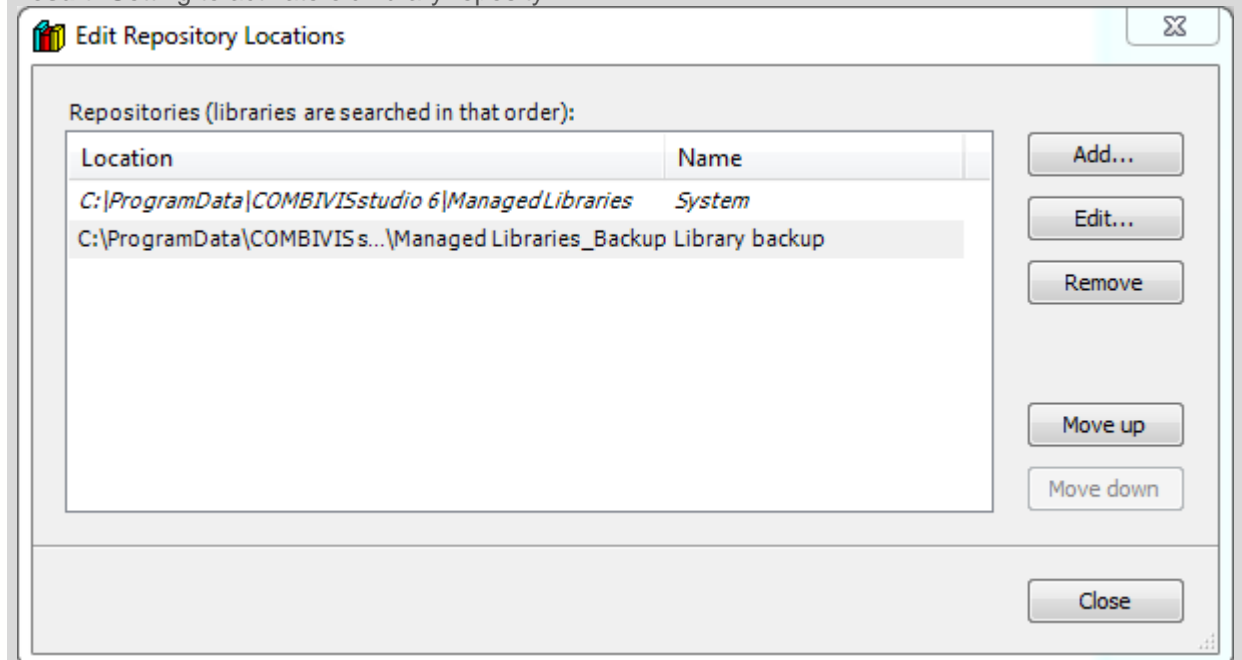
The library backup repository easily can be re-activated.



Location: C:\ProgramData\COMBIVIS studio 6\Managed Libraries_Backup
Name: Library backup



Result: Setting to activate old library repository:





Recommendations

For new projects always work with a cleaned up repository, to

- Improve the handling performance
- Improve the repository readability
- Prevent usage of discontinued versions

For existing projects make sure that an projectarchive is available.

In general always store a finalized project as projcetarchive. In this way all components can be restored on other workstations or with newer ide installations.

If no projectarchive had been saved and some objects are missing with the new ide version the “restore repository” procedure can help to restore old objects.

Disclaimer

KEB Automation KG reserves the right to change/adapt specifications and technical data without prior notification. The safety and warning reference specified in this manual is not exhaustive. Although the manual and the information contained in it is made with care, KEB does not accept responsibility for misprint or other errors or resulting damages. The marks and product names are trademarks or registered trademarks of the respective title owners.

The information contained in the technical documentation, as well as any user-specific advice in verbal or in written form are made to the best of our knowledge and information about the application. However, they are considered for information only without responsibility. This also applies to any violation of industrial property rights of a third-party.

Inspection of our units in view of their suitability for the intended use must be done generally by the user. Inspections are particularly necessary, if changes are executed, which serve for the further development or adaptation of our products to the applications (hardware, software or download lists). Inspections must be repeated completely, even if only parts of hardware, software or download lists are modified.

Application and use of our units in the target products is outside of our control and therefore lies exclusively in the area of responsibility of the user.

KEB Automation KG
Südstraße 38 • D-32683 Barntrup
fon: +49 5263 401-0 • fax: +49 5263 401-116
net: www.keb.de • mail: info@keb.de