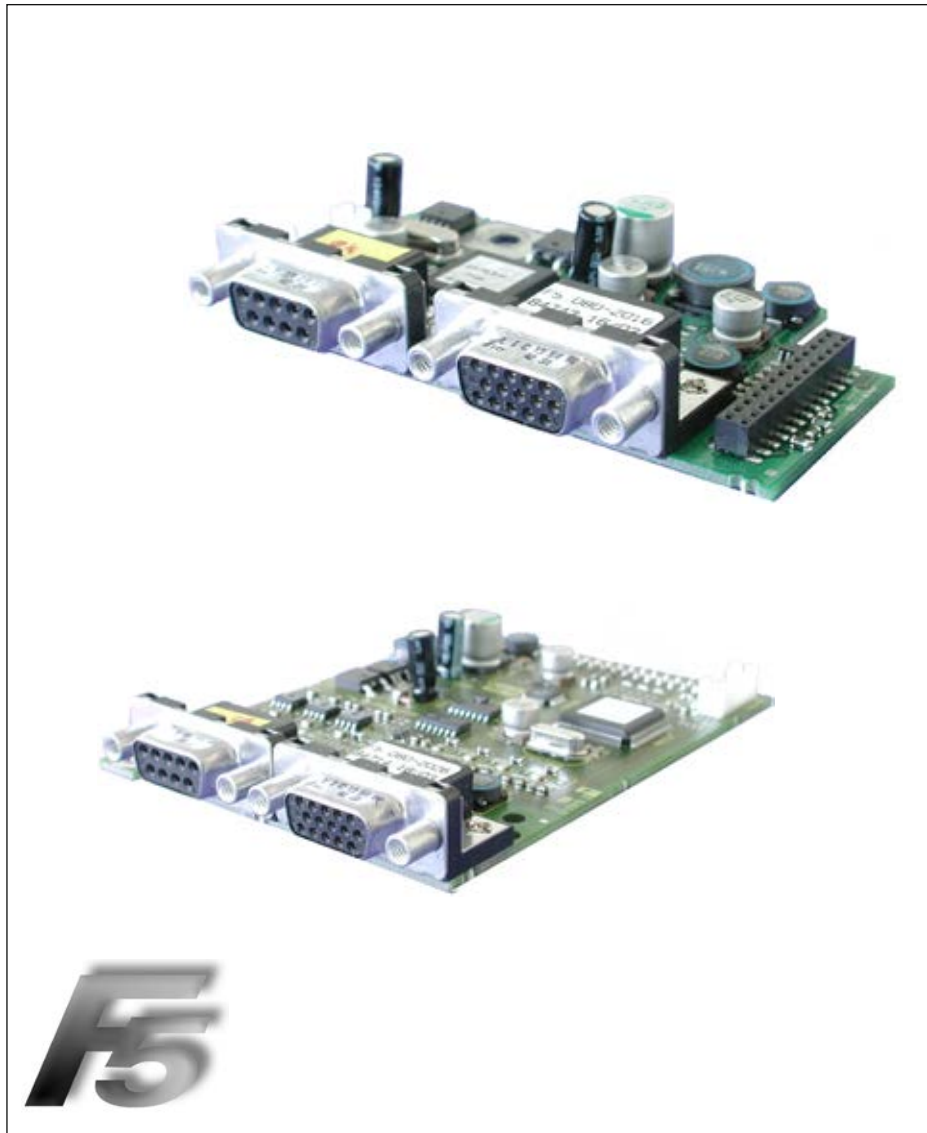


COMBIVERT



Instructions For Use
Encoder Interface

COMBIVERT F5
Channel 1 SIN/COS Channel 2 variable

| | | |
|------------------------------------|------|---------|
| Translation of the original manual | | |
| Document | Part | Version |
| 20145744 | GBR | 00 |








Preface

The described hard- and software are developments of the KEB Automation KG. The enclosed documents correspond to conditions valid at printing. Misprint, mistakes and technical changes reserved.

Signal words and symbols

Certain operations can cause hazards during the installation, operation or thereafter. There are safety informations in the documentation in front of these operations. Security signs are located on the device or machine. A warning contains signal words which are explained in the following table:

| | |
|--|---|
|  DANGER | Dangerous situation, which will cause death or serious injury in case of non-observance of this safety instruction. |
|  WARNING | Dangerous situation, which may cause death or serious injury in case of non-observance of this safety instruction. |
|  CAUTION | Dangerous situation, which may cause minor injury in case of non-observance of this safety instruction. |
| Attention | Situation, which can cause damage to property in case of non-observance. |

RESTRICTION

Is used when certain conditions must meet the validity of statements or the result is limited to a certain validity range.



Is used when the result will be better, more economic or trouble-free by following these procedures.

More symbols

- ▶ This arrow starts an action step.
- / - Enumerations are marked with dots or indents.
- => Cross reference to another chapter or another page.



Note to further documentation.
<https://www.keb.de/de/service/downloads.html>



Preface

Laws and guidelines

KEB Automation KG confirms with the CE mark and the EC declaration of conformity, that our device complies with the essential safety requirements.

The CE mark is located on the name plate. The EC declaration of conformity can be downloaded on demand via our website. Further information is provided in chapter "Certification".

Warranty

The warranty on design, material or workmanship for the acquired device is given in the current terms and conditions.



Here you will find our current terms and conditions.
<https://www.keb.de/de/agb.html>



Further agreements or specifications require a written confirmation.

Support

Through multiple applications not every imaginable case has been taken into account. If you require further information or if problems occur which are not treated detailed in the documentation, you can request the necessary information via the local KEB Automation KG agency.

The use of our units in the target products is beyond of our control and therefore exclusively the responsibility of the machine manufacturer, system integrator or customer.

The information contained in the technical documentation, as well as any user-specific advice in spoken and written and through tests, are made to best of our knowledge and information about the application. However, they are considered for information only without responsibility. This also applies to any violation of industrial property rights of a third-party.

Selection of our units in view of their suitability for the intended use must be done generally by the user.

Tests can only be done within the application by the machine manufacturer. They must be repeated, even if only parts of hardware, software or the unit adjustment are modified.



Copyright

The customer may use the instruction manual as well as further documents or parts from it for internal purposes. Copyrights are with KEB Automation KG and remain valid in its entirety.

Other wordmarks or/and logos are trademarks (™) or registered trademarks (®) of their respective owners and are listed in the footnote on the first occurrence.

| | |
|--|----|
| 2. Product description | 6 |
| 2.1 General..... | 6 |
| 2.2 Material number | 6 |
| 2.3 Scope of delivery (option or replacement delivery) | 6 |
| 2.4 Mechanical installation | 7 |
| 3. Description of the Interface | 7 |
| 3.1 Voltage supply | 7 |
| 3.2 Channel 1 | 8 |
| 3.2.1 Specifications | 8 |
| 3.2.2 Description of X3A..... | 8 |
| 3.2.3 Input signals | 8 |
| 3.2.3.1 Analog input signals | 9 |
| 3.2.3.2 Encoder monitoring | 10 |
| 3.2.4 Connection of the encoder | 11 |
| 3.2.4.1 Encoder cabel at SUB-D15 | 11 |
| 3.2.5 Encoder cable | 12 |
| 3.2.6 Encoder line length..... | 12 |
| 3.2.7 Tested encoders..... | 12 |
| 3.3 Channel 2 | 12 |
| 4. Start-up | 13 |
| 4.1 Parameter description | 13 |
| 4.1.1 Encoder 1 status (Ec.37)..... | 13 |

2. Product description

| Figure 1: SIN/COS at Channel 1 | |
|---|--|
| For housing size G...U | For housing size D and E |
|  |  |
| X3B Channel 2 see material number | X3A Channel 1 SIN/COS |

2.1 General

Each of the interface cards delivered by KEB include two interfaces. As there are numerous different combinations available each interface will be described by means of separate instructions. The instruction comprises the installation of the interface card, the connection as well as the start-up of a suitable encoder. Further information and the parameter adjustments are described in the application manual for the inverter/servo.

2.2 Material number

| | | | | | | | | |
|-----------------------------|----|------------------|--|------------|------|--------------------|-----------|------|
| xM | F5 | K8G | X | X | X | X | | |
| | | Term of delivery | 0 | installed | Z | Option, spare part | | |
| | | Interface X3A | M | TTL output | 2036 | N | TTL input | 2035 |
| | | | 1 | SSI-input | 2021 | | | |
| | | | F5 | Series | | | | |
| applicable for housing size | | 1M | D, E (circuit board 1M.F5.280-xxxx see above) | | | | | |
| | | 2M | G...U (circuit board 2M.F5.280-xxxx see above) | | | | | |

2.3 Scope of delivery (option or replacement delivery)

- Encoder interface
- two instruction manuals
- fixing bolt
- packing material

2.4 Mechanical installation

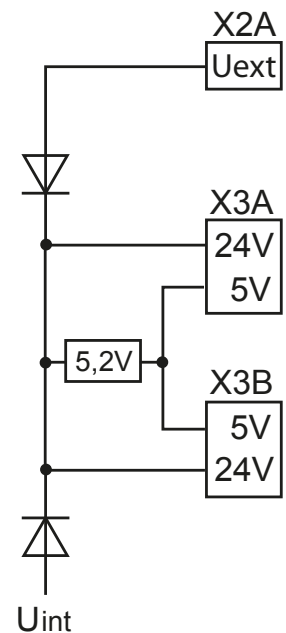
All kind of works on the inverter may be carried out by authorized personnel in accordance with the EMC and safety rules only.

- Switch inverter de-energized and await capacitor discharge time
- Pull off operator
- Remove plastic cover
- Remove fixing bolt
- Fix interface board beginning from the socket connector straightly
- Screw in fixing bolt
- Attach plastic cover

3. Description of the Interface

3.1 Voltage supply

| Figure 3.1 Voltage supply of control and encoder interfaces | | |
|---|--|--|
| U_{int} | 24 VDC | Internal voltage supply of COMBIVERT. |
| I_{int} | 120 mA | at Hiperface, Sin/Cos, EnDat, SSI-Sin/Cos and UVW. |
| | 170 mA | at all other encoder interfaces. |
| U_{ext} | Control terminal strip (X2A) of the COMBIVERT with external voltage supply 24...30 DCV. | |
| 24 V | Voltage output of encoder interfaces X3A and X3B for encoder supply. | |
| I_{24V} | Current I_{int} reduces itself by draw current to the 5V output in accordance with the following formula: $I_{24V} = I_{int} - \frac{5.2 \text{ V} \times I_{5V}}{U_{int}}$ | |
| 5 V | Voltage output for encoder supply. 5.2 V are obtained from the 24 V voltage. | |
| I_{5V} | 300 mA | at Hiperface, Sin/Cos, EnDat, SSI-Sin/Cos and UVW. |
| | 500 mA | at all other encoder interfaces. |
| | 1 A | at external supply (dependent on the voltage source) |



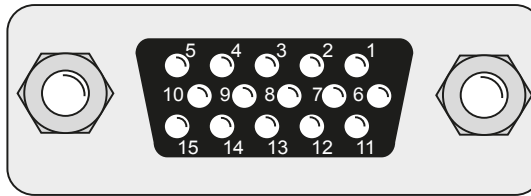
3.2 Channel 1

3.2.1 Specifications

| | |
|---------------------------|---|
| X3A | Socket SUB-D15 |
| Interface type | SIN/COS |
| Inputs / tracks | 1 Vss typical (0.6...1.2) |
| Limiting frequency | 200 kHz |
| Increments per revolution | 1...2048 inc (recommendation 1024 inc for speed upto 4500 rpm) |
| Input resistance | 120 Ω |
| Max. line length | 50 m, the value is additionally limited by the signal frequency, cable capacity and supply voltage (see chapter „encoder line length“). |

3.2.2 Description of X3A

Figure 3.2.2 Socket X3A



| PIN | Name | Description |
|-----|--------|---|
| 1 | C- | Signal input C- (difference signal to C+) |
| 2 | D- | Signal input D- (difference signal to D+) |
| 3 | A- | Signal input A- (difference signal to A+) |
| 4 | B- | Signal input B- (difference signal to B+) |
| 5 | - | - |
| 6 | C+ | Absolute track for initial position and angular calculation |
| 7 | D+ | Absolute track for initial position and angular calculation |
| 8 | A+ | Incremental encoder input track A for counter and direction detection |
| 9 | B+ | Incremental encoder input B for counter and direction detection |
| 10 | - | - |
| 11 | 24V | Power supply for encoder |
| 12 | +5.25V | Power supply for encoder |
| 13 | COM | Reference potential for voltage supply |
| 14 | -R | Signal input R- (difference signal to R+) |
| 15 | +R | Zero track |
| - | GND | Connection for shield at the connector housing (is directly connected with the inverter earth). |

3.2.3 Input signals

Tracks C and D are giving an absolute signal to the control unit. The period is correspond exactly to one mechanical revolution of the encoder. At starting the control unit will start with this relative inaccurate absolute value. With the first zero pulse the position will be corrected. Thus approach to reference point is not necessary.

The output signals of tracks A and B are dependent on the encoder line number. If the encoder line number, adjusted in parameter Ec.01, is not correspond with the actual encoder line number, an error will be triggered immediately after revolution of the rotor axis.

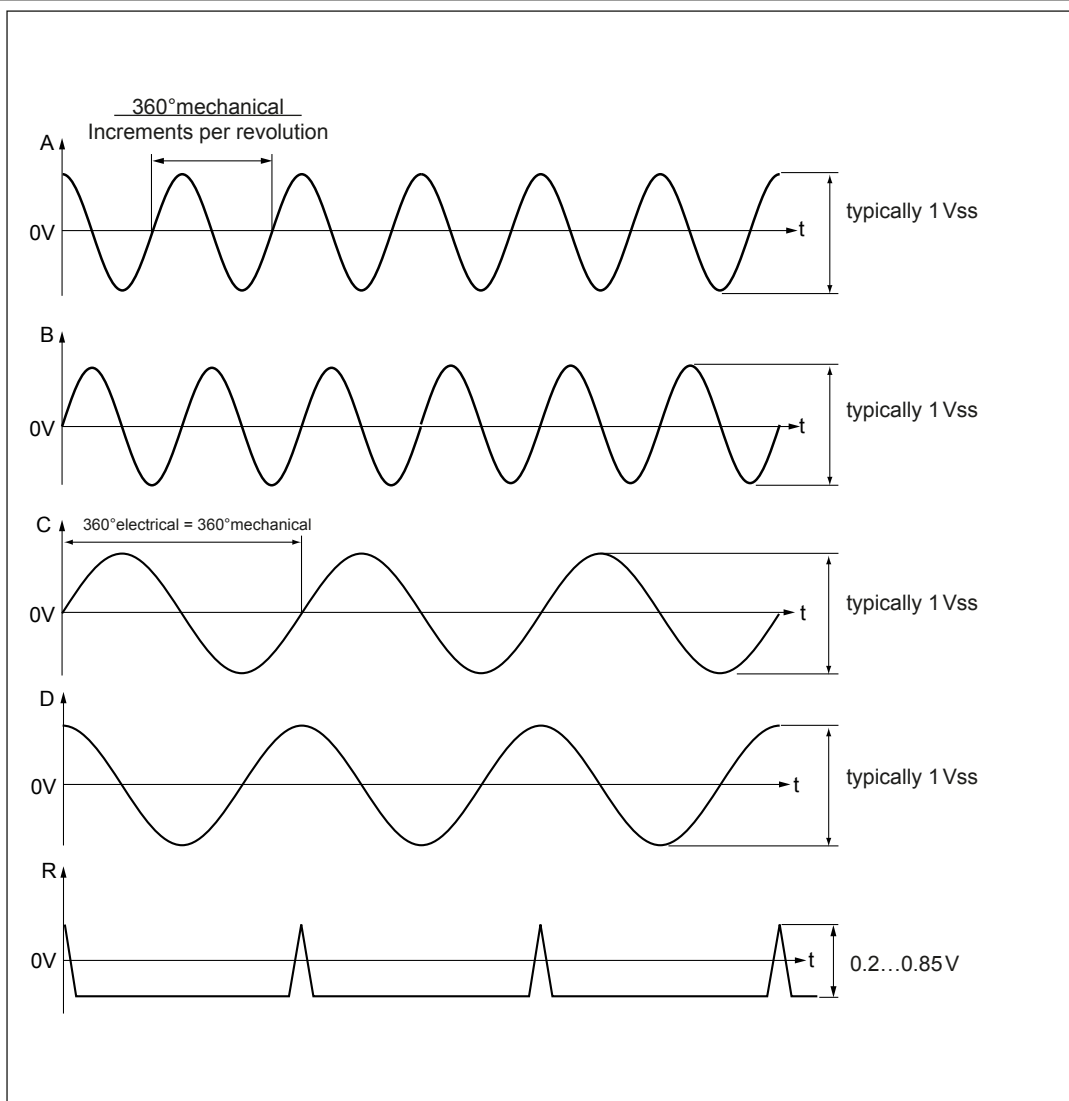
The zero track will permanently be compared with the position. In case a difference occurs the position will be corrected with a ramp time after a filter. In addition the position value of the absolute track (C and D) will be compared with the position any 30ms. Since the absolute track is relatively inaccurate, corrections are only made until a valid zero signal is recognized. Then only an error is released, if the difference exceeds a maximum value.



If no absolute and/or zero track is recognized during power-on, this functions are getting deactivate. Operation with exclusively utilization of the high resolution tracks A and B is possible.

3.2.3.1 Analog input signals

Figure 3.2.3.1 Signal tracks



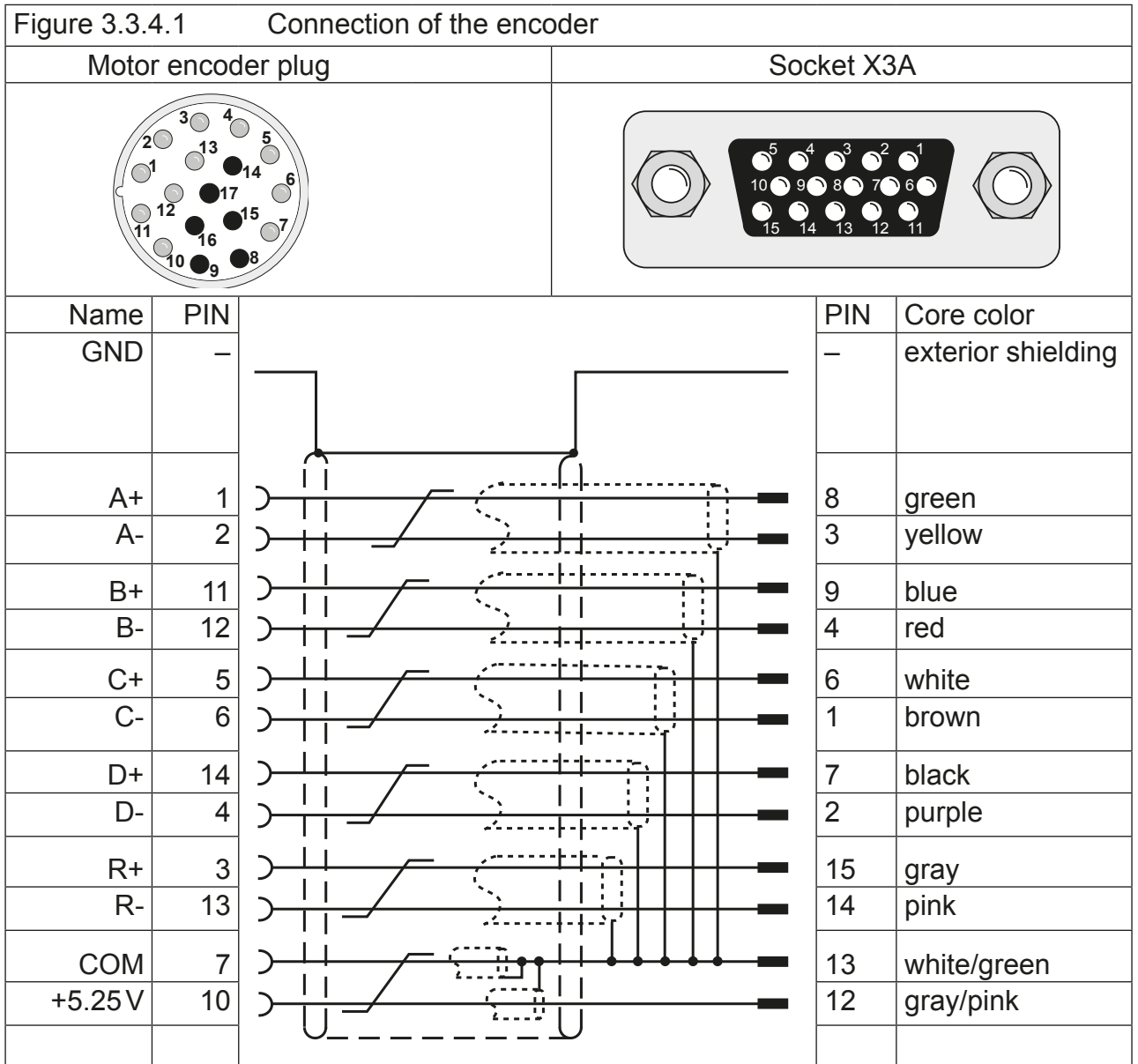
3.2.3.2 Encoder monitoring

| Parameter | | r/w | Enter | prog. |
|---|--------------------|---------------------------------------|-------|-------|
| Ec.42 | Encoder alarm mode | yes | no | no |
| <p>The encoder monitoring is a software function and dependent on the encoder type. The absolute track is monitored approx. all 30 ms and the incremental track is monitored approx. all 16 ms. If the permissible signal levels are fallen below „Error! Encoder 1“ (value 32) is triggered. Dependent on the encoder type the response time can be 100 ms and more.</p> | | | | |
| Setting range | Setting | Meaning | | |
| 0 | 1 | Encoder monitoring off | | |
| 1 | | Encoder monitoring on | | |
| 2 | | Encoder monitoring on (open-loop off) | | |
| 3 | | Warning | | |

3.2.4 Connection of the encoder

3.2.4.1 Encoder cable at SUB-D15

- Encoder cable double-shielded and twisted in pairs
- Connect exterior shielding at both ends to PE/GND
- Connect interior shielding at one side to COM
- Do not connect exterior and interior shielding



3.2.5 Encoder cable

KEB encoder cables are corresponding to the following specification:

| | |
|-------------------|---------------------------------|
| Signal lines | 4 x (2 x 0.14 mm ²) |
| Supply lines | 2 x (0.5 mm ²) |
| Particularities | trailing capable, oil resistant |
| Temperature range | constant up to 80 °C |
| Color | green RAL 6018 |
| Material number | 00.S4.209-xxxx |

3.2.6 Encoder line length

The maximum line length of the encoder cable is 50 m. It results from the voltage drop of the supply line. The value is calculated as follows:

| | |
|------------------------------------|---|
| Encoder line length = | $\frac{U - U_{\min}}{I_{\max} \cdot 2 \cdot R}$ |
| max. encoder current I_{\max} : | see encoder description |
| Supply voltage U: | 5.2 V |
| minimum input voltage U_{\min} : | see encoder description |
| KEB encoder cable resistance R: | 0.036 Ω/m at 0.5 mm ² |

3.2.7 Tested encoders

The following encoder can be used dependent on the interface and the control:

| Manufacturer | Type | Encoder type |
|--------------|---------|-----------------|
| Heidenhain | ERN1188 | SIN/COS-encoder |

However, this does not restrict the use of rotary encoders with same specifications of other manufacturers.

3.3 Channel 2

The description of input X3B is depending on the used encoder interface. It is described in a separate manual.

4. Start-up

After installation or exchange of an encoder interface some adjustments of the inverter/ servo software have to be done before operation:

- Switch on inverter
- Select application mode
- When using synchronous motors set ud.2 to F5-S
- Select parameter Ec.00 and control whether „14: SIN/COS“ is displayed. The displayed value has to be confirmed by „ENTER“ in any case.
- Select parameter Ec.10 and carry out the same for the 2. encoder interface
- Depending on the encoder interface and control card (see 3.3.7) control/adjust the number of increments per rev. (Ec.1), the SSI data code (Ec.43) and the SSI data word length (Ec.44 and Ec.53).
- Select parameter Ec.01 and adjust increments per revolution

4.1 Parameter description

4.1.1 Encoder 1 status (Ec.37)

This parameter displays, by means of different status messages, the status of encoder and interface. Dependent on the encoder only special messages are possible. All errors are only set at control release, although they are already displayed in Ec.37.

| Value | Description |
|--|---|
| The following value is displayed at correct operation: | |
| 16 | Position values are being transferred, encoder and interface are working |
| The following status messages triggers „Error Encoder Change“ (E.EncC) because the correct evaluation of the position is no longer guaranteed. Error E.EncC can only be reset via parameter Ec.0. Exception! An error due to wrong increments per revolution (value 70) is reset immediately, if the correct increments per revolution are adjusted (from software 2.7). Attention, the modulation is released, when the control release is still set! | |
| 64 | Encoder is unknown and will not be supported |
| 67 | The signals of the incremental track are not correct, e.g. no encoder is connected or the encoder cable is defective. |
| 68 | The signals of the absolute track are not correct. The absolute track at Endat, Hiperface and SSI-Sin/Cos is digital. The absolute track at Sin/Cos is analog. |
| 69 | Position deviation too high. The position determined by the incremental signals and the absolute position (of absolute track, zero signal or serial selected) does no longer correspond or cannot be corrected. |
| 70 | Increments per revolution adjusted in the inverter does not correspond with encoder increments per revolution. |
| 71 | Interface type is unknown: Interface has not been recognized. |
| 75 | Encoder temperature too high (message from encoder) |
| 76 | Rotary speed is too high (message from encoder) |
| further on next page | |

| Value | Description |
|---|---|
| 77 | Encoder signals are outside the specification (message from encoder) |
| 78 | Encoder has internal defect (message from encoder) |
| 92 | Encoder will be formatted. When writing an encoder with memory structures different from the KEB-definition, their memories will be re-organized in such a manner that they can be written. This procedure can take some seconds, depending on the respective memory structure. |
| 96 | New value detected, because an another encoder is attached. |
| 98 | Interface is busy |
| The following status messages triggers „Error Encoder 1“ (E.Enc1), if encoder data is read: | |
| 97 | KEB-reference is undefined. Memory structure of the encoder does not correspond to the KEB-definition and therefore data cannot be read. The encoder is defined by writing data. At F5-S the error is reset as follow: <ul style="list-style-type: none">• writing a position to Ec.2.• perform a system position trimming |
| Following status messages trigger error „Error Hybrid“ (E.HYb): | |
| 0,255 | No communication between interface and control card. |

– Headquarter

KEB Automation KG

Südstraße 38 • D - 32683 Barntrup
Telefon +49 5263 401-0 • Telefax 401-116
Internet: www.keb.de • E-Mail: info@keb.de

KEB Antriebstechnik GmbH • Getriebemotorenwerk
Wildbacher Straße 5 • D - 08289 Schneeberg
Telefon +49 3772 67-0 • Telefax 67-281
Internet: www.keb-drive.de • E-Mail: info@keb-drive.de

GESELLSCHAFTEN

ÖSTERREICH

KEB Antriebstechnik Austria GmbH
Ritzstraße 8
A - 4614 Marchtrenk
Tel: +43 7243 53586-0
Fax: +43 7243 53586-21
E-Mail: info@keb.at
Internet: www.keb.at

GROSSBRITANNIEN

KEB (UK) Ltd.
5 Morris Close
Park Farm, Industrial Estate,
Wellingborough
GB - Northants, NN8 6 XF
Tel: +44 1933 402220
Fax: +44 1933 400724
E-Mail: info@keb.co.uk
Internet: www.keb.co.uk

RUSSLAND

KEB RUS Ltd.
Lesnaya str, house 30
Dzerzhinsky (MO)
RUS - 140091 Moscow region
Tel: +7 495 6320217
Fax: +7 495 6320217
E-Mail: info@keb.ru
Internet: www.keb.ru

CHINA

KEB Power Transmission
Technology (Shanghai) Co. Ltd.
No. 435 QianPu Road
Songjiang East Industrial Zone
CN-201611 Shanghai, PR. China
Tel: +86 21 37746688
Fax: +86 21 37746600
E-Mail: info@keb.cn
Internet: www.keb.cn

ITALIEN

KEB Italia S.r.l. Unipersonale
Via Newton, 2
I - 20019 Settimo Milanese (Milano)
Tel: +39 02 3353531
Fax: +39 02 33500790
E-Mail: info@keb.it
Internet: www.keb.it

USA

KEB America, Inc
5100 Valley Industrial Blvd. South
USA - Shakopee, MN 55379
Tel: +1 952 224 1400
Fax: +1 952 224 1499
E-Mail: info@kebameric.com
Internet: www.kebameric.com

FRANKREICH

Société Française KEB SASU
Z.I. de la Croix St. Nicolas
14, rue Gustave Eiffel
F - 94510 LA QUEUE EN BRIE
Tel: +33 1 49620101
Fax: +33 1 45767495
E-Mail: info@keb.fr
Internet: www.keb.fr

JAPAN

KEB - Japan Ltd.
15 - 16, 2 - Chome
Takanawa Minato-ku
J - Tokyo 108 - 0074
Tel: +81 33 445-8515
Fax: +81 33 445-8215
E-Mail: info@keb.jp
Internet: www.keb.jp

Repräsentanten

- Belgien
- Brasilien
- Korea
- Spanien

Weitere Partner für ...

Ägypten • Australien • Belgien • Bulgarien • Dänemark • Griechenland • Indien • Indonesien • Iran • Israel • Malaysia
Marokko • Neuseeland • Niederlande • Pakistan • Polen • Portugal • Rumänien • Schweden • Schweiz • Singapur
Slowakei • Spanien • Südafrika • Taiwan • Thailand • Tunesien • Tschechien • Türkei • Ungarn • Usbekistan

... unter www.keb.de/de/kontakt/keb-weltweit.html



| | | |
|--------------|------------|----|
| Document | 20145744 | |
| Part/Version | GBR | 00 |
| Date | 2017-01-20 | |