



Disable the function to open the keyboard automatically

FAQ No.0001

Part	Version	Revision	Date	Status
en	4.0.1154.32	001	2019-01-01	Released

Content

Introduction	2
Settings	2
Disclaimer	7

Introduction

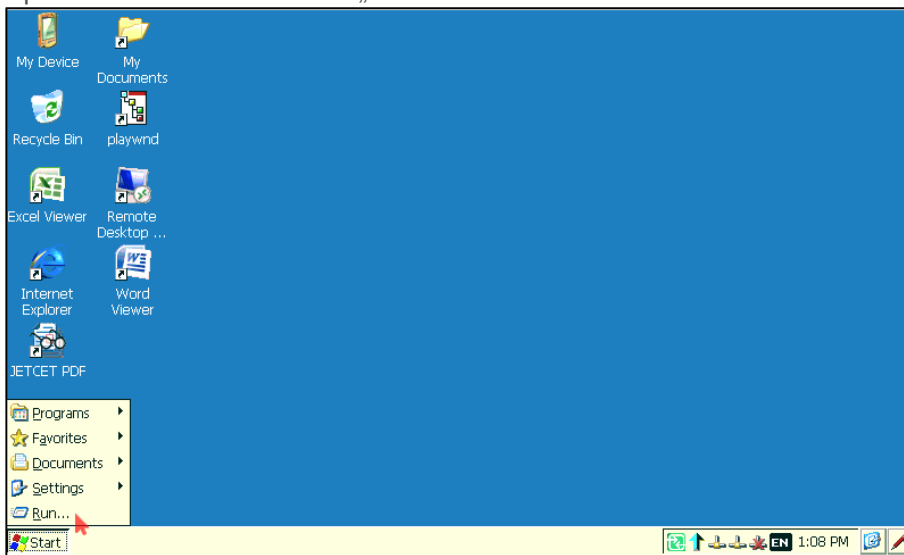
This document contains the steps to disable the function that the keyboard opens automatically. (For Win CE 7.0 operating systems).

If you follow the instruction the keyboard don't open automatically anymore.

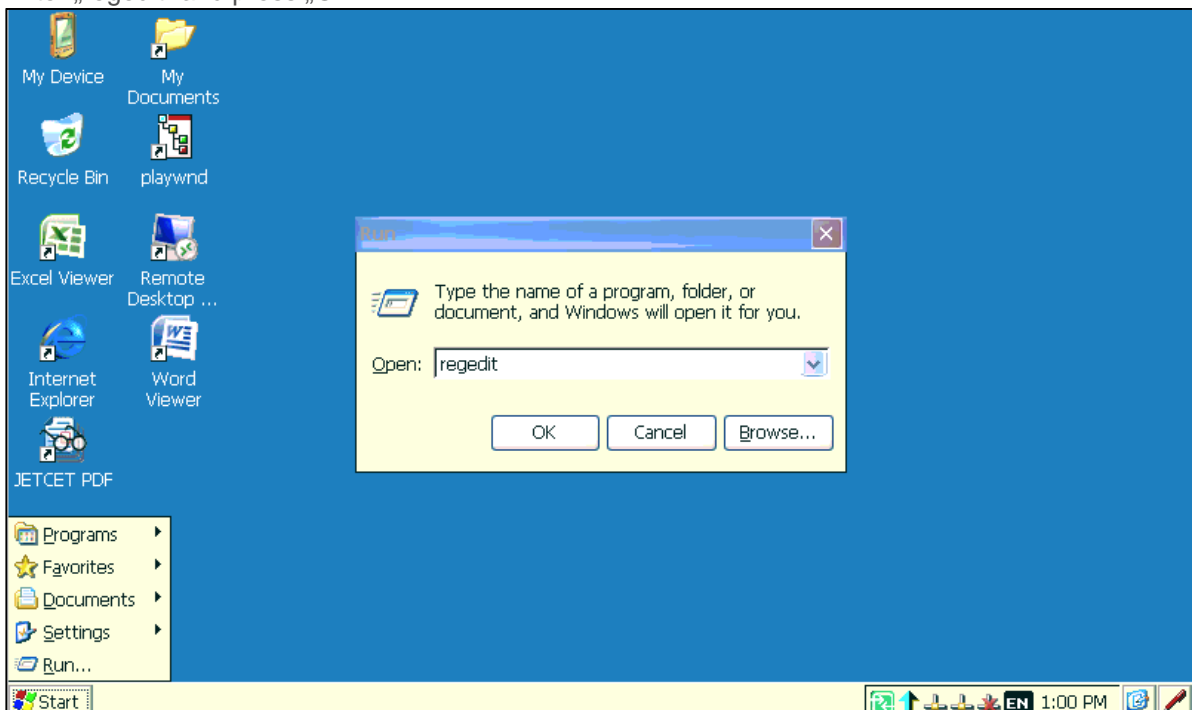
HINT: This function is automatically deactivated as HMI runtime version 5.0.1183.16

Settings

Open about the Start icon the „Run...“ function



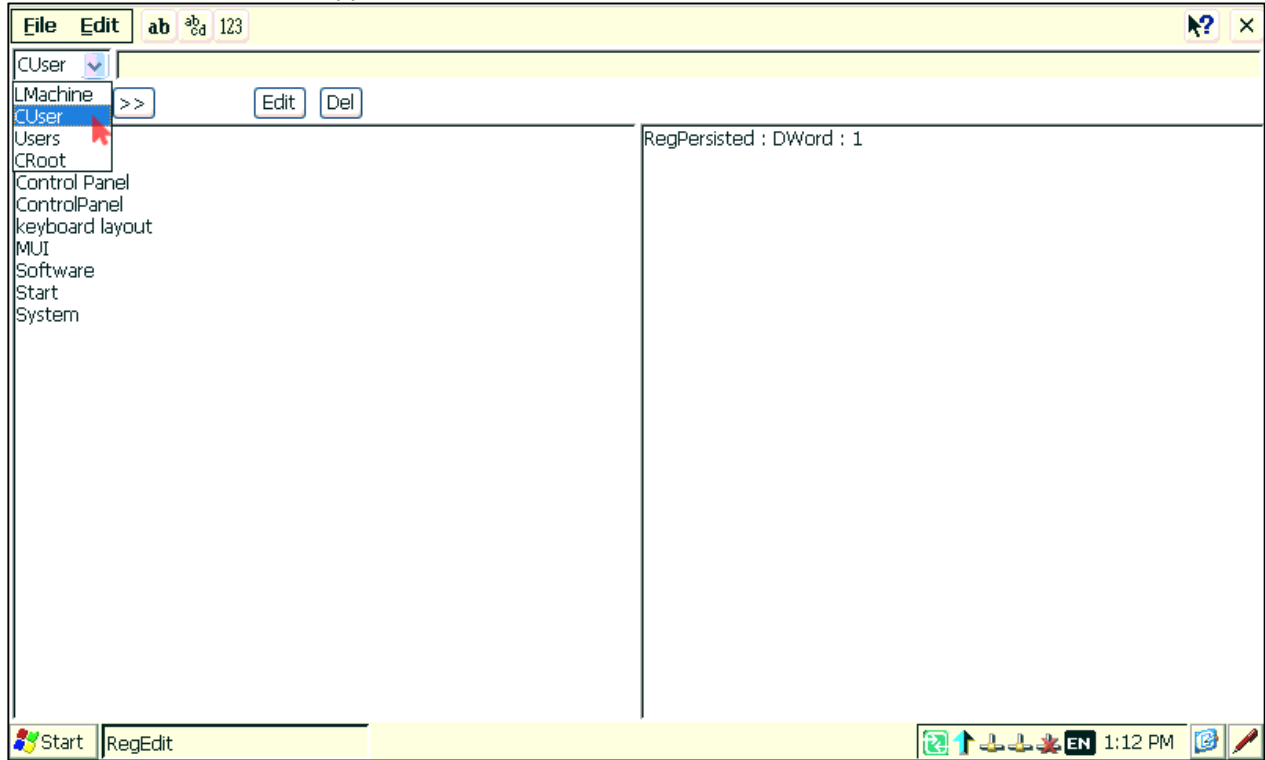
Enter „regedit“ and press „OK“



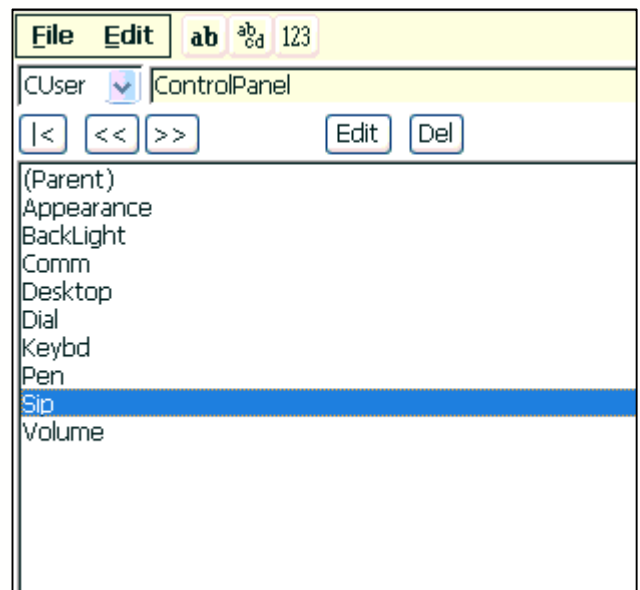
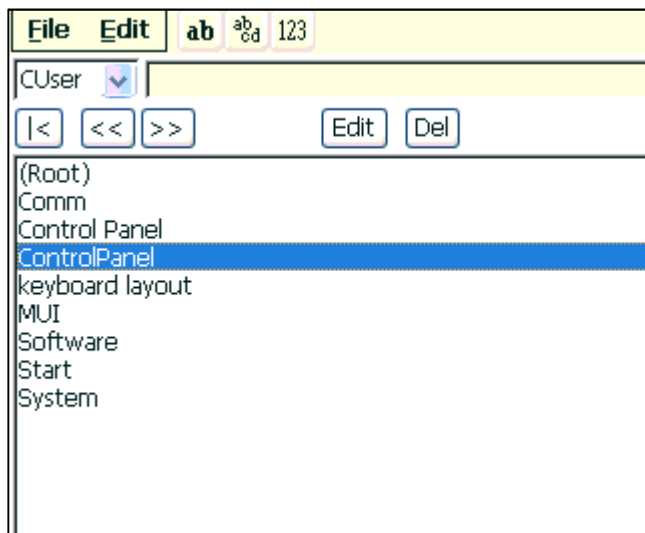
FAQ C6 HMI



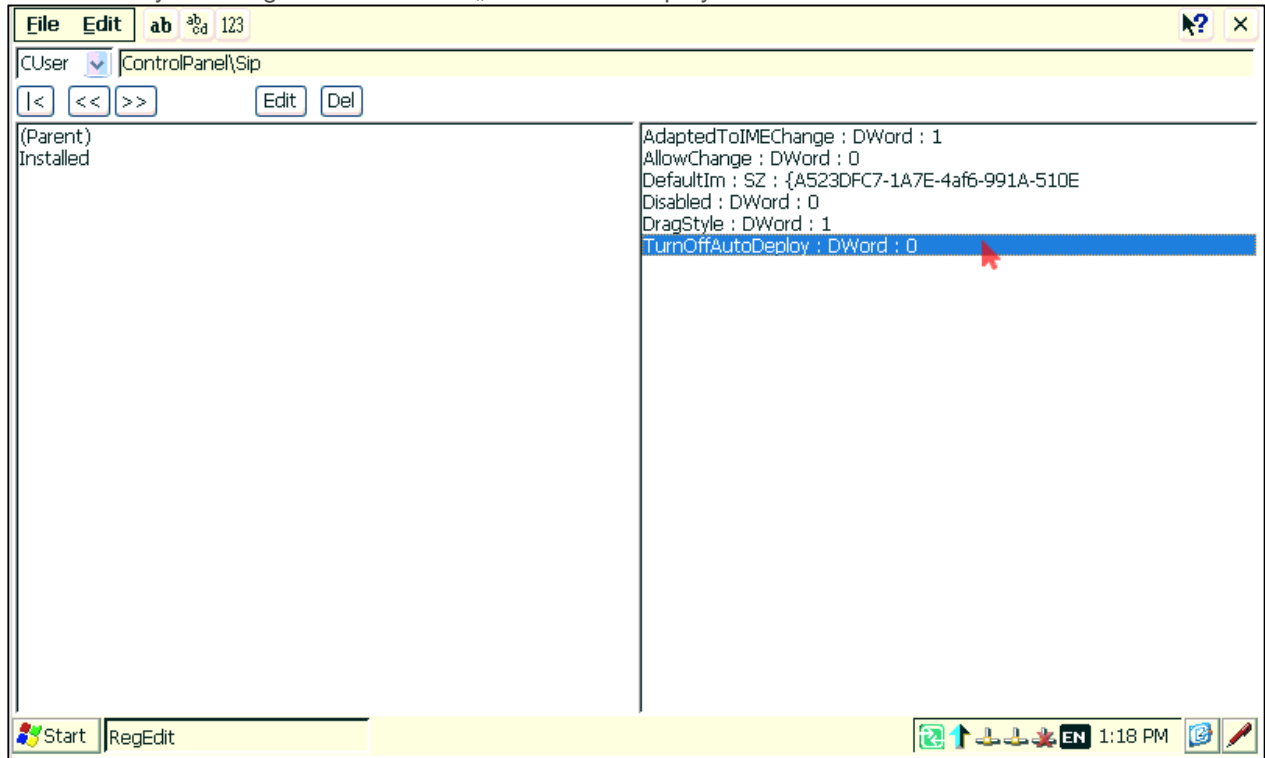
Choose „CUser“ in the left upper corner.



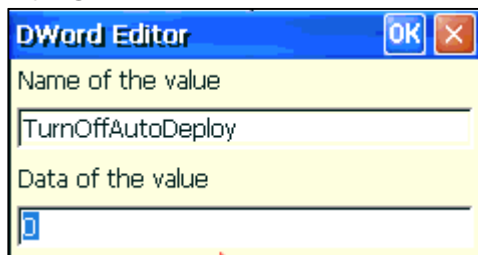
Select at first „ControlPanel“ and then „Sip“



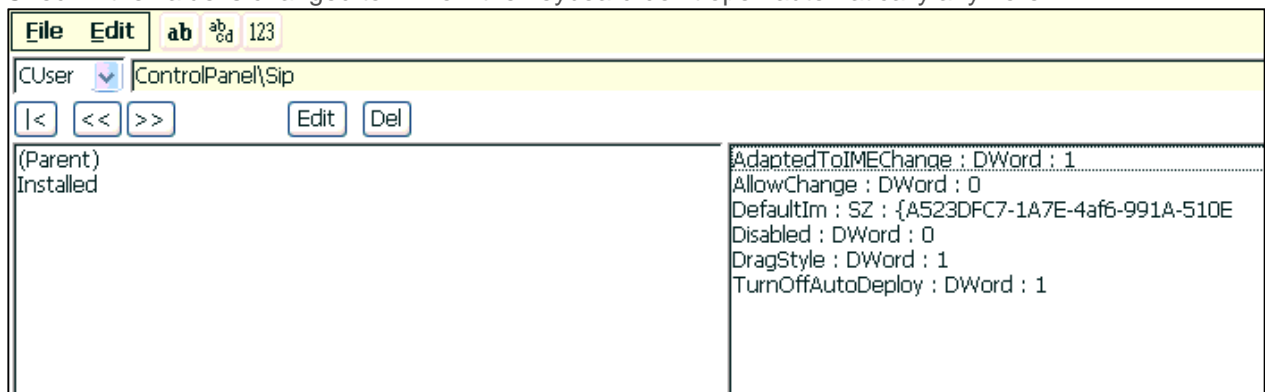
It's necessary to change the value from „TurnOffAutoDeploy“



With a double click you can open the following window. Enter in “Data of the value” the 1 and confirm it with “OK”.



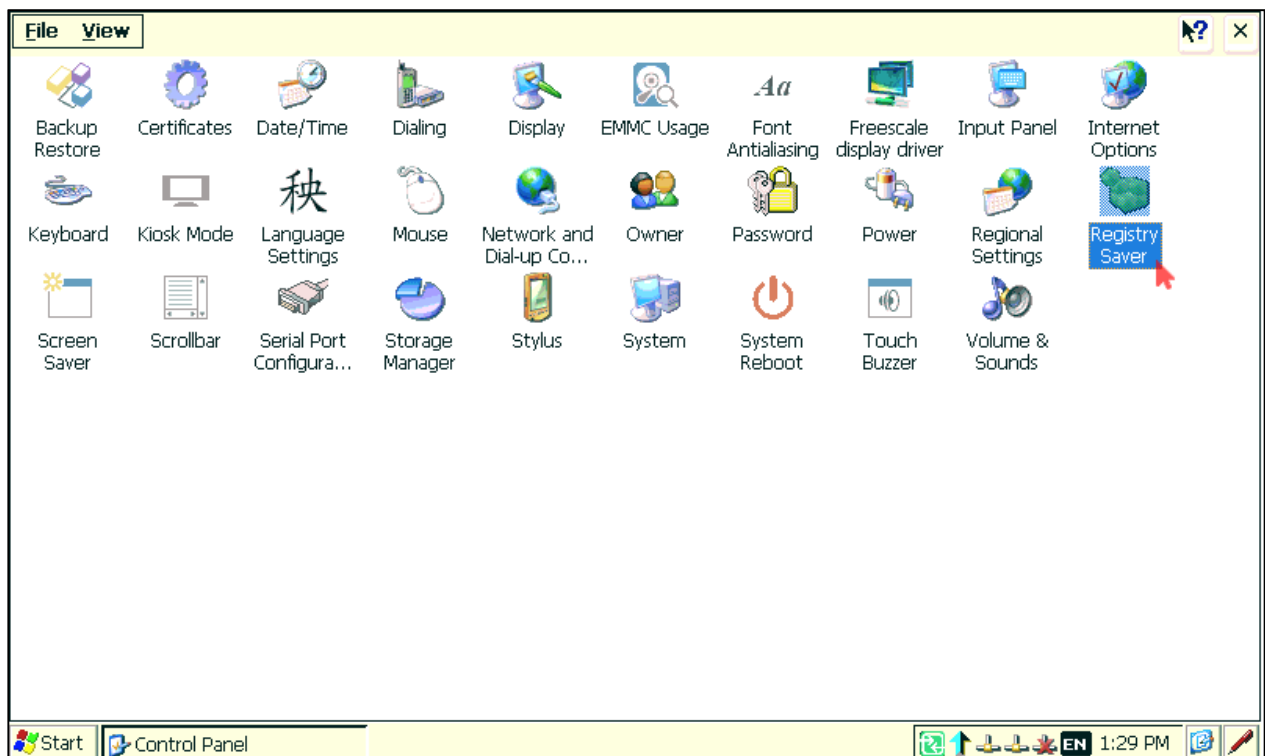
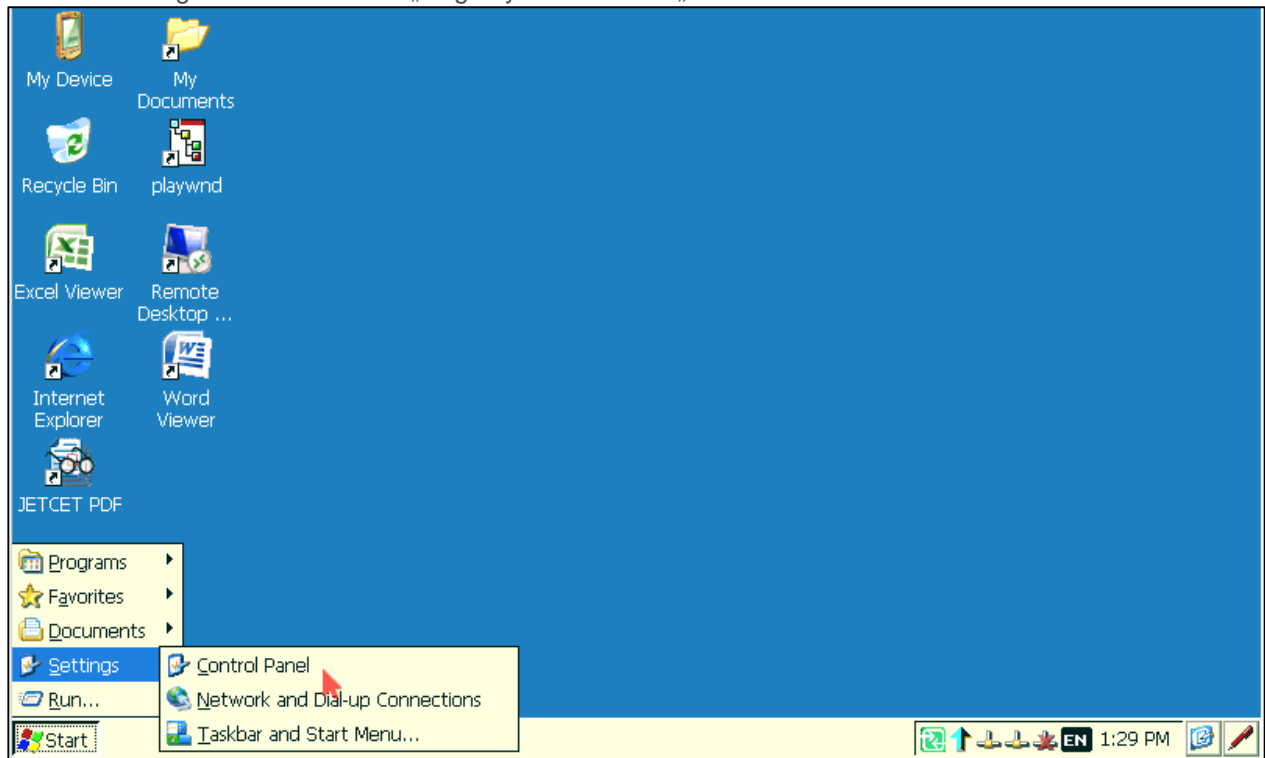
Check if the value is changed to 1. Now the keyboard don't open automatically anymore.



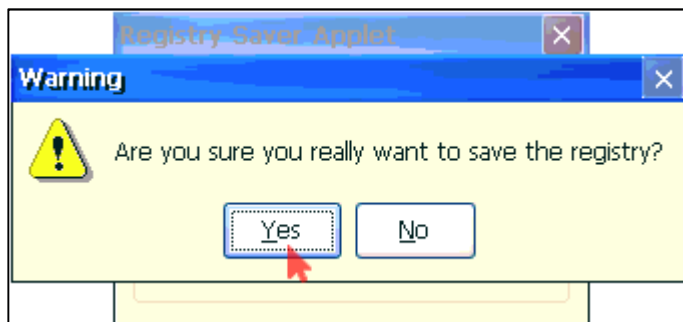
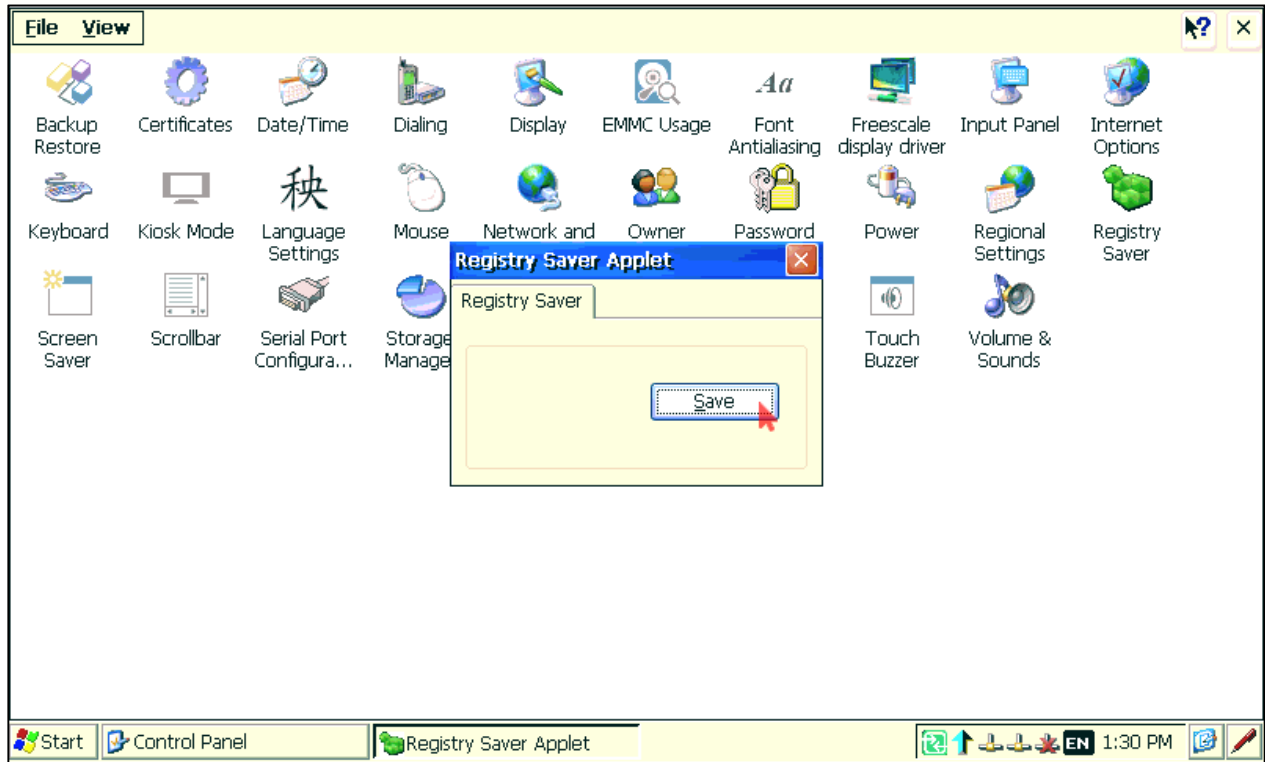
FAQ C6 HMI



Safe the settings with the function „Registry Saver“ in the „Control Panel“.



FAQ C6 HMI



Disclaimer

KEB Automation KG reserves the right to change/adapt specifications and technical data without prior notification. The safety and warning reference specified in this manual is not exhaustive. Although the manual and the information contained in it is made with care, KEB does not accept responsibility for misprint or other errors or resulting damages. The marks and product names are trademarks or registered trademarks of the respective title owners.

The information contained in the technical documentation, as well as any user-specific advice in verbal or in written form are made to the best of our knowledge and information about the application. However, they are considered for information only without responsibility. This also applies to any violation of industrial property rights of a third-party.

Inspection of our units in view of their suitability for the intended use must be done generally by the user. Inspections are particularly necessary, if changes are executed, which serve for the further development or adaptation of our products to the applications (hardware, software or download lists). Inspections must be repeated completely, even if only parts of hardware, software or download lists are modified.

Application and use of our units in the target products is outside of our control and therefore lies exclusively in the area of responsibility of the user.

KEB Automation KG
Südstraße 38 • D-32683 Barntrup
fon: +49 5263 401-0 • fax: +49 5263 401-116
net: www.keb.de • mail: info@keb.de