



System Manager Handling auf C6 HMI FAQ No.0004

Part	Version	Revision	Date	Status
en	6.0.1	006	2020-09-16	Released

Content

Introduction	2
Install the Function „Backup Restore” Tool	2
Install the „Backup Restore“ Tool	2
Function „Backup“	3
Calling up the function „Backup/Restore“	3
Create a backup of the existing system	3
Backup of specific system features into a project archive (*.asr)	6
Function „Restore“	10
Important: Safe COMBIVIS connect files	10
Older image version (< 7.0)	10
Newer image version (>= 7.0)	11
Restore of a system by means of backup	12
Disclaimer	17

Introduction

This document describes the use of the function "Backup / Restore" which is available on the C6 HMI. It can be used for updating the firmware as well as for the creation of a backup and restoration of the system.

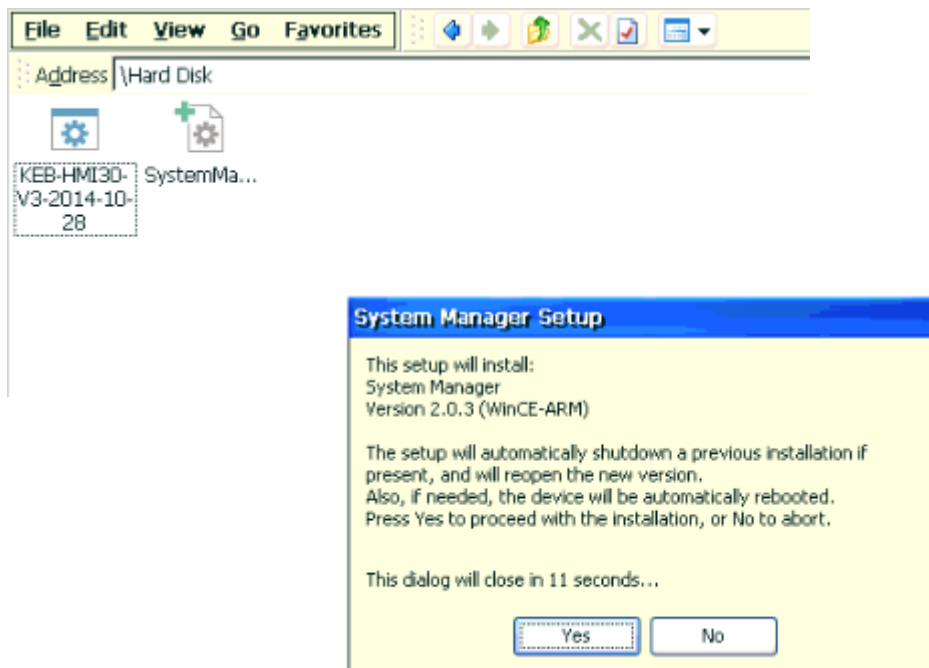
If the Backup Restore Tool is not installed on the HMI, you can install it yourself.

Which version of the system manager (contains the Backup / Restore Tool) is needed depends on the corresponding image version of the device. An image update of the system always requires an update of the system manager!

Install the Function „Backup Restore” Tool

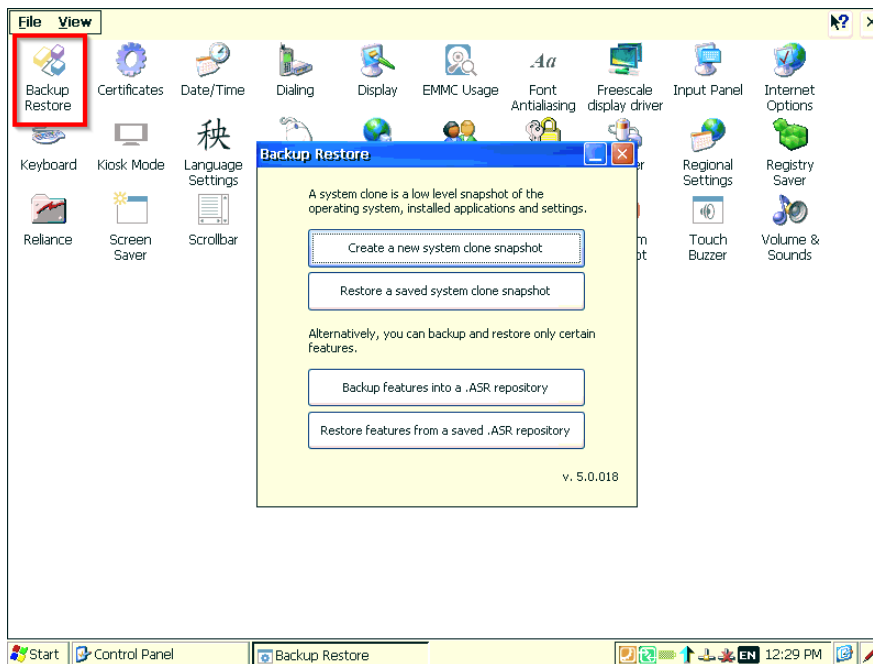
Install the „Backup Restore“ Tool

If the „Backup Restore“ Tool is not installed on the HMI System, you can install it yourself. Please use for the installation the right Symbol “SystemManagerSetup”. The following message you have to confirm with “Yes” during the installation process.

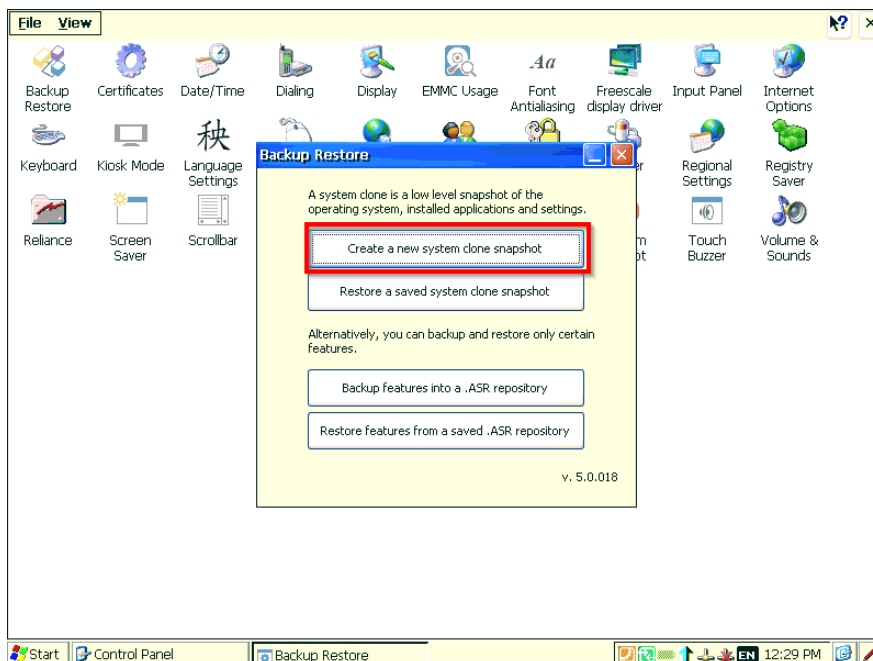


Function „Backup“

Calling up the function „Backup/Restore“



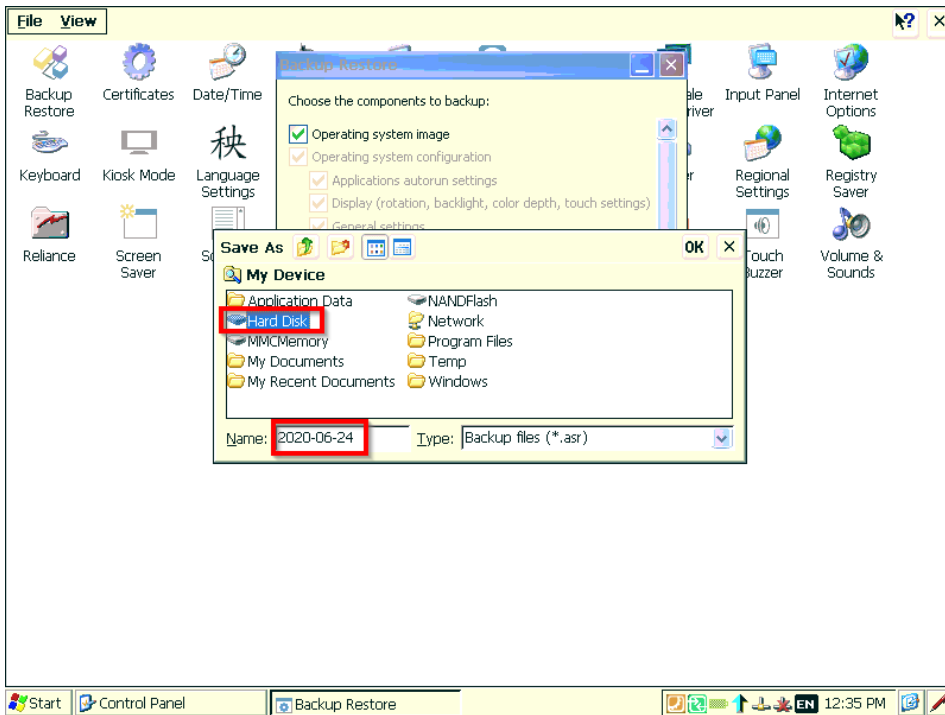
Create a backup of the existing system



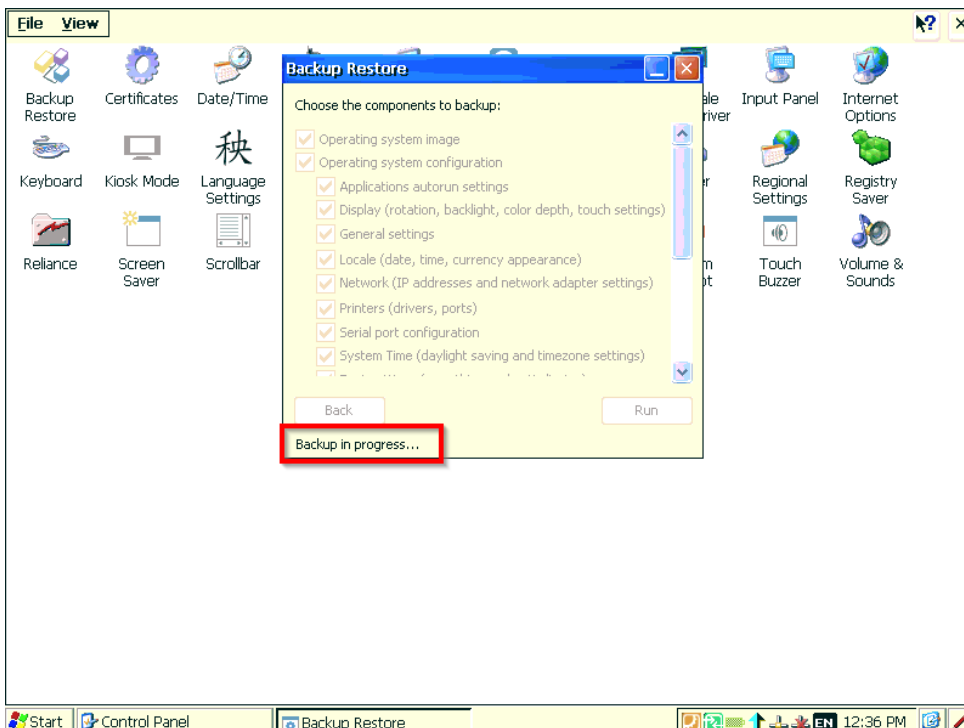
FAQ COMBIVIS studio HMI



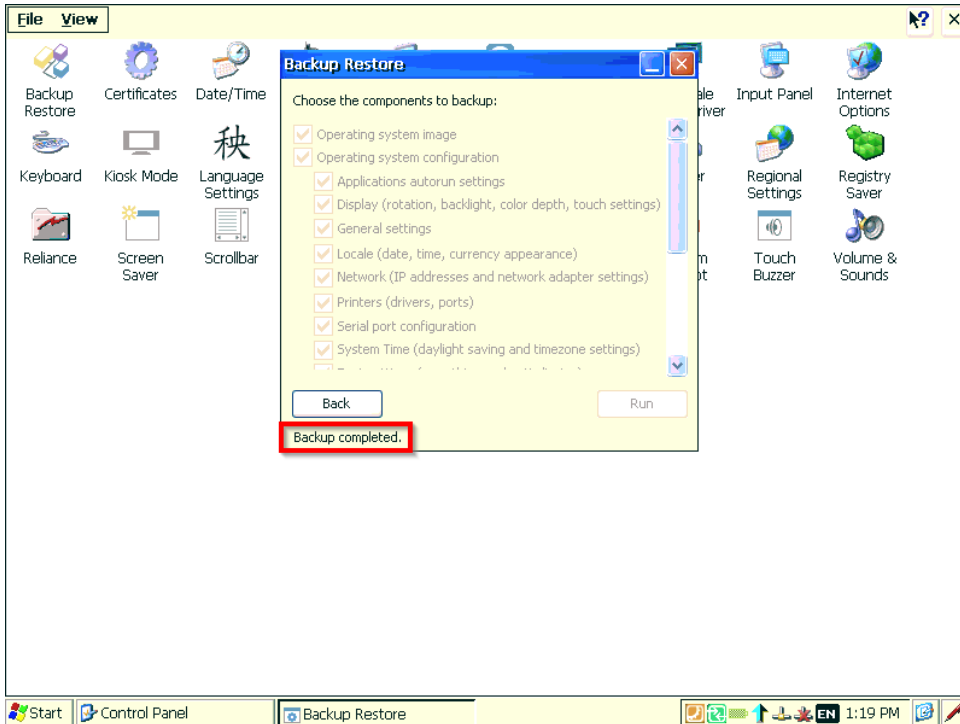
Start the backup by clicking on "Run" and select a storage location for the backup file.



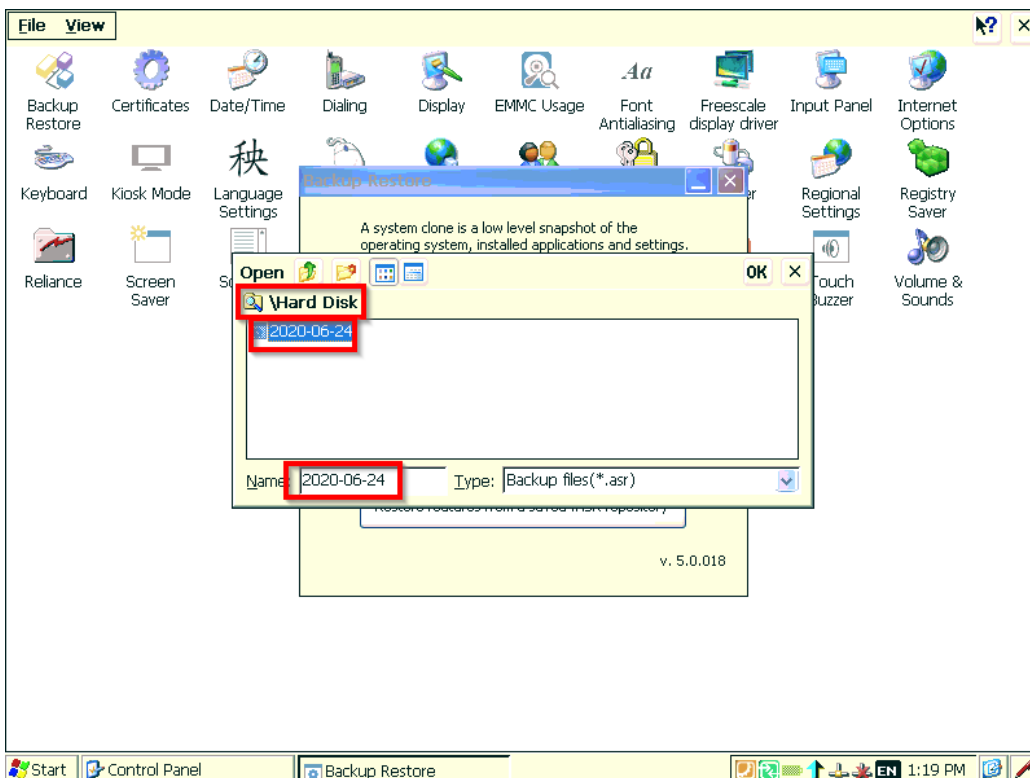
Process of the backup is started.



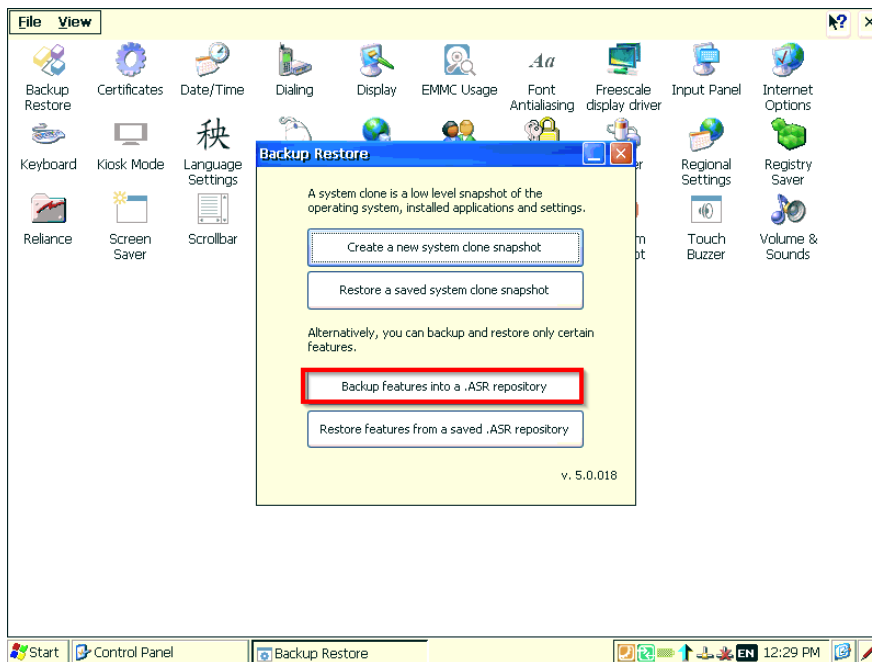
FAQ COMBIVIS studio HMI



As soon as the backup process is complete, the file can be used in the selected folder.



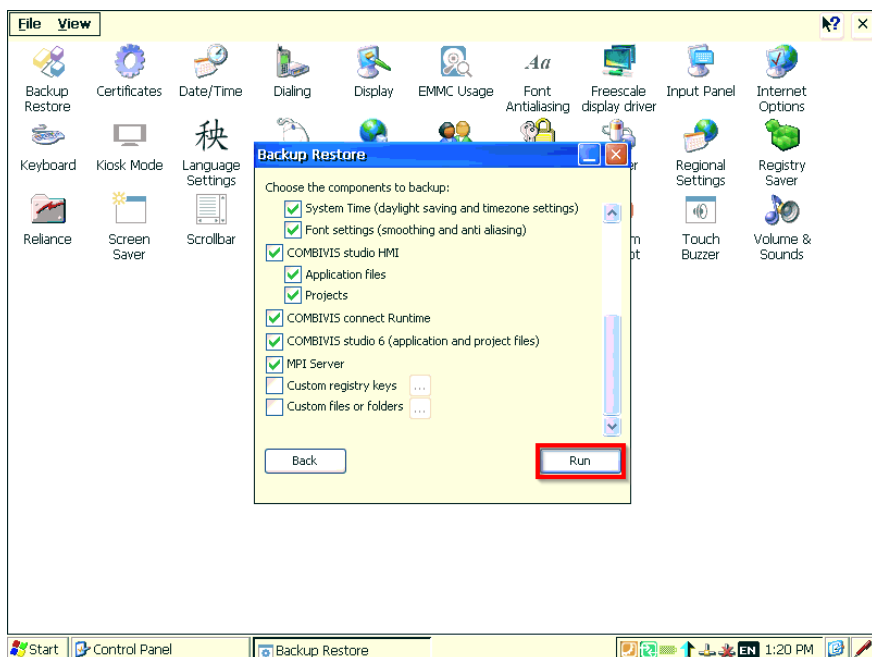
Backup of specific system features into a project archive (*.asr)



Select the desired components which should be saved in the backup. Then start the backup via the button „Run“.

Hint:

If you want to save folders and registry keys follow the instructions on the next page and press the “run” button



Registry Key:

You can add to the backup archive some custom registry keys, that will be later written in the registry by the restore process. To specify the custom keys, you must write them in a file that follows the "Windows Registry Editor Version 5.00" standard.

However it could happen that the imported file is not accepted, because it is recognized as invalid. This function need a ".reg" – file with contain following rules:

- 1) The first line of the file must include the properly header followed by a blank line;
- 2) the double word values (dword) must always be written using 8 digits;
- 3) every line of the file must avoid trailing spaces;
- 4) always insert an empty line between a key and the other;
- 5) there must not be empty lines at the end of the file.

Example:

```
Windows Registry Editor Version 5.00

[HKEY_LOCAL_MACHINE\Drivers\USBTouch]
"DLL"="USBTouch.dll"

[HKEY_LOCAL_MACHINE\HARDWARE\DEVICEMAP\TOUCH]
"DriverName"="eTouch.dll"
"CalibrationData"="102,102 1945,102 1945,1945 102,1945"

[HKEY_LOCAL_MACHINE\Drivers\TouchKit]
"FLAGS"=dword:00000000
"FixedRotateInfo"=dword:00000000
"BeepFrequency"=dword:000001F4
```

(Activate the checkbox in the backup restore tool and add the created file via the three points.)

Customized folders:

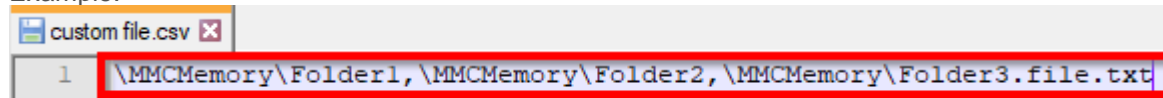
This tool provides support to backup custom files.

The feature requires a Comma-Separated Values (CSV) file contains the list of the files to be included into the backup.

The CSV file can be created with any text editor and must contain, in a given format, the list of custom folders to be added to the backup. (Without a space)

Once the file is ready, copy it to the panel and add it about the three points.

Example:



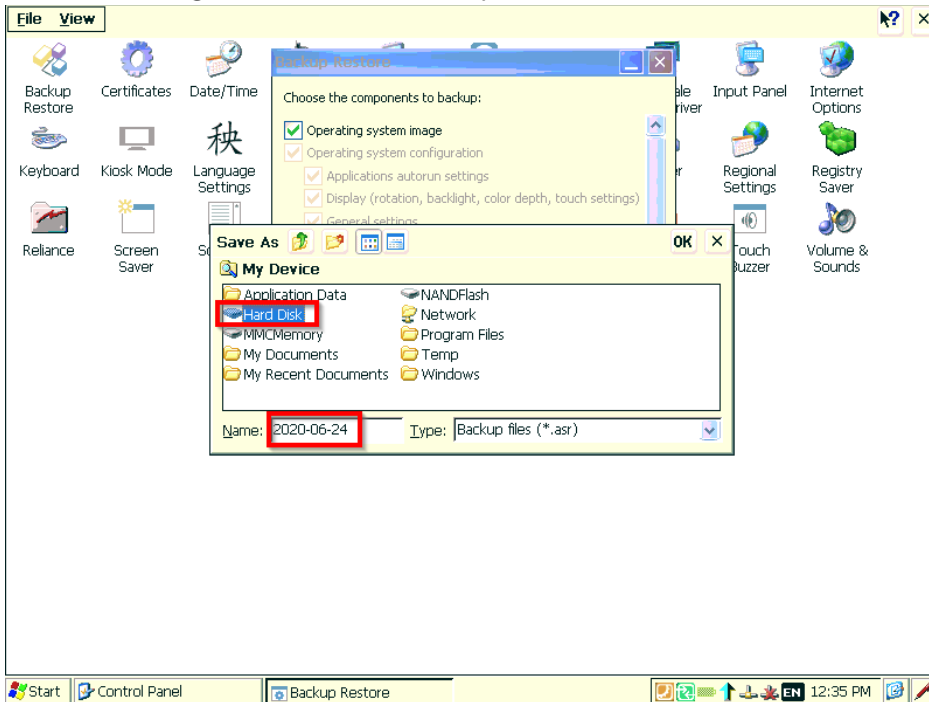
All the files present in \Folder1 and Folder2 but only the file.txt of Folder3 will be included into the backup. Backup of empty folder is not supported.

(Activate the checkbox in the backup restore tool and add the created file via the three points.)

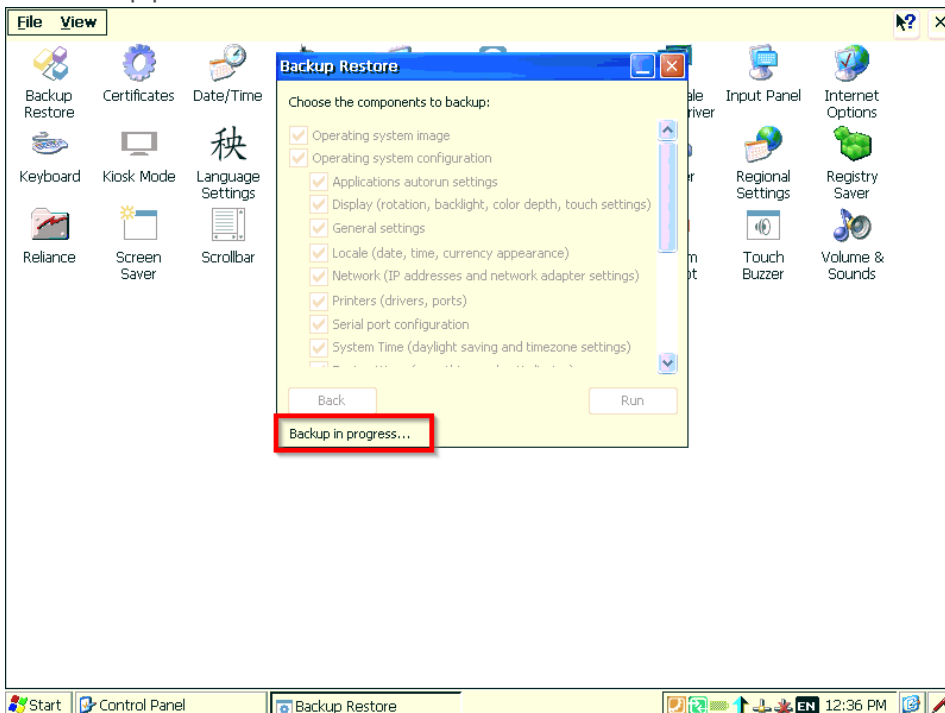
FAQ COMBIVIS studio HMI



Select the storage location for the backup file.



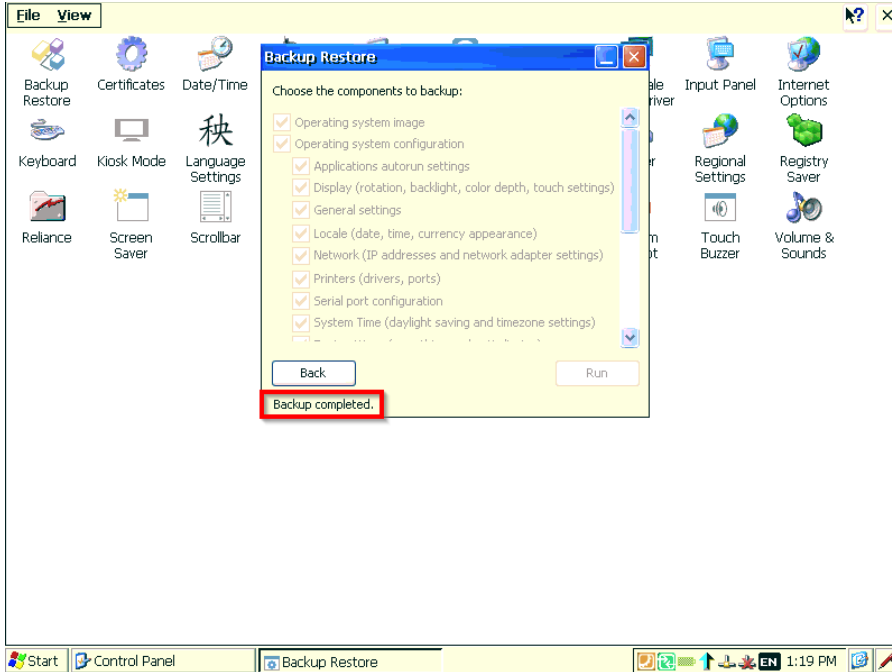
The backup process is started.



FAQ COMBIVIS studio HMI



In the end of the process you get the message "Backup complete".



Function „Restore“

Note: It's important that the power supply and the connection to the USB of the device are guaranteed during the whole update process! Disconnection of the USB-stick or interruption of the power while updating can causes damages on the devices!

Important: Safe COMBIVIS connect files

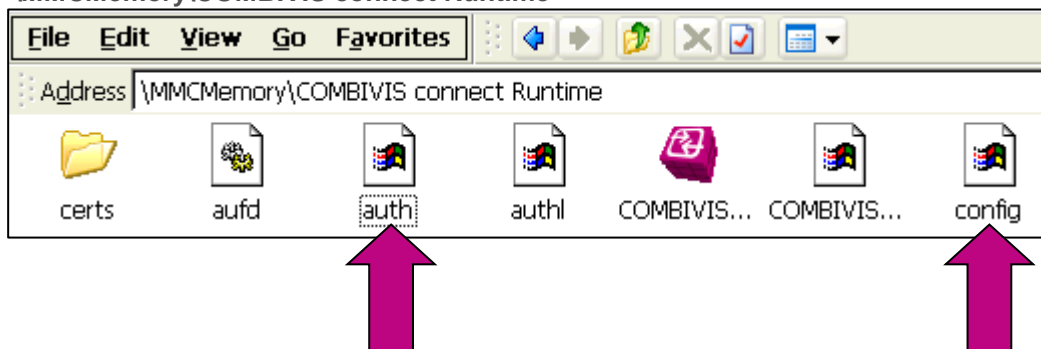
If the device is already located in a COMBIVIS connect domain, it's possible to safe the settings- and authentication-files before you execute the restore process. Copy the files "auth.bin" and "config.xml" to an USB-stick.

The file **auth.bin** is only available if the COMBIVIS connect runtime has connected with the COMBIVIS connect server (server infrastructure) at least once.

Older image version (< 7.0)

These files are located on:

"\MMCMemory\COMBIVIS connect Runtime"



After updating to the new image, you can copy the files back to the folder and the device will connect automatically to the domain with the old settings.

Hint:

It's necessary to implement the connect files like the next chapter [Newer image version \(>= 7.0\)](#) ,if you install an image version bigger / equals 7.0.

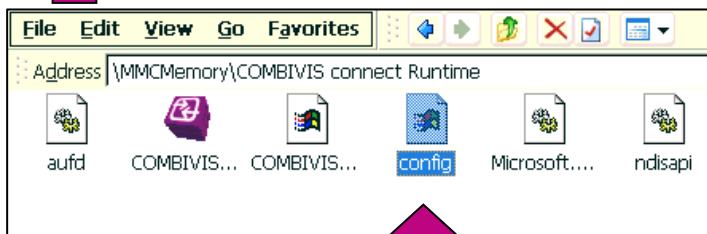
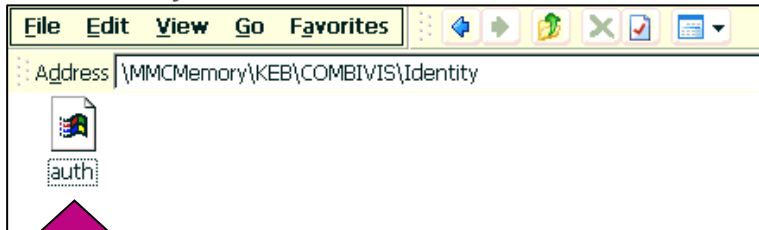
FAQ COMBIVIS studio HMI



Newer image version (>= 7.0)

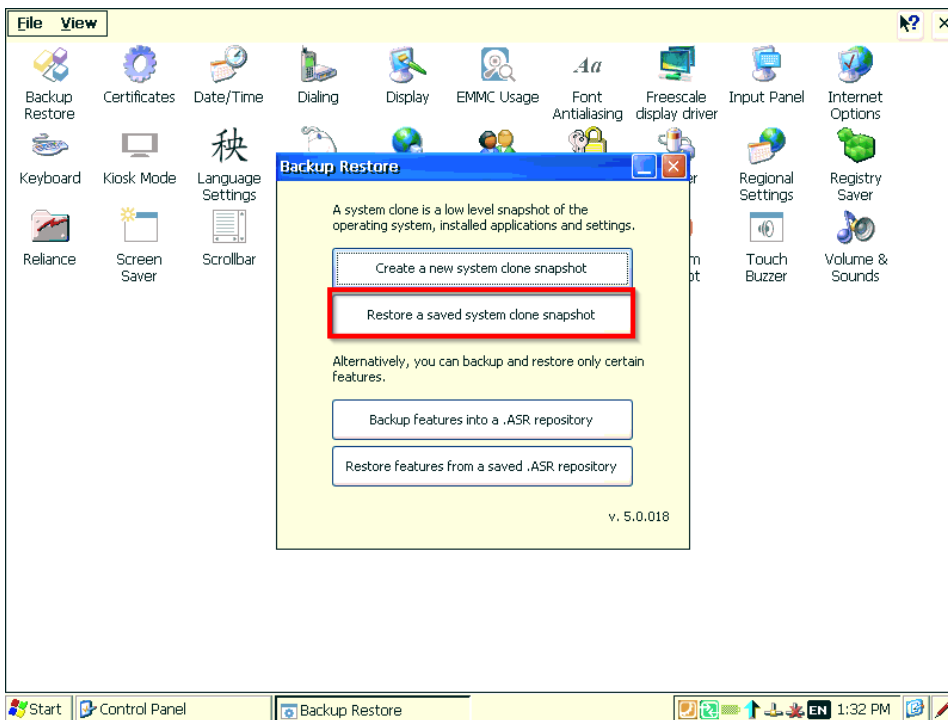
These files are located on:

“\MMCMemory\COMBIVIS connect Runtime” and “\MMCMemory\KEB\COMBIVIS\Identity”

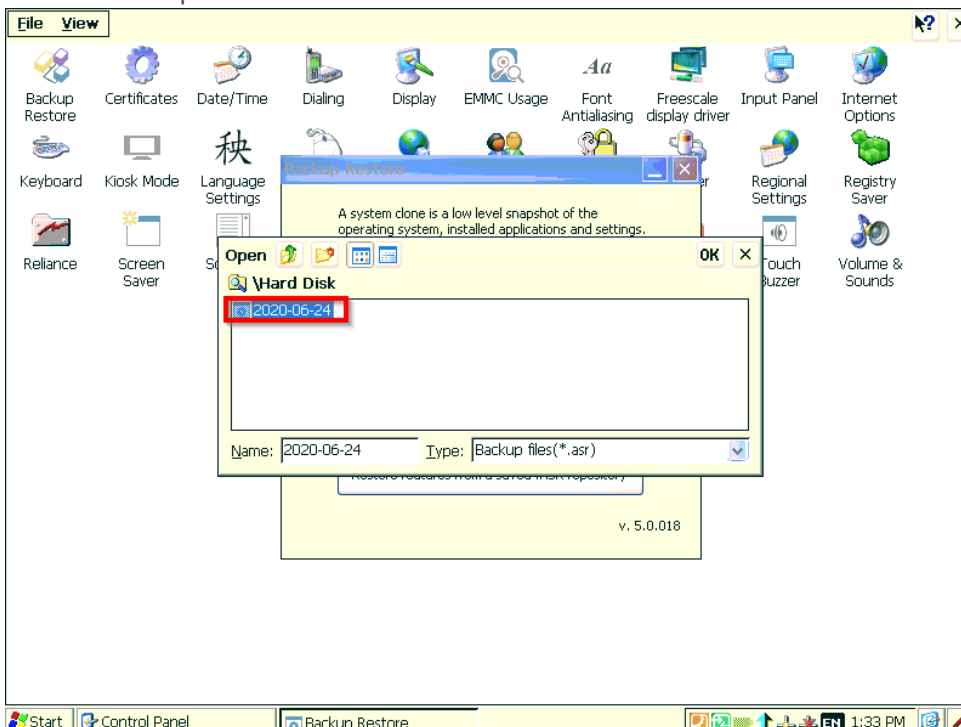


After updating to the new image, you can copy the files back to the folder and the device will connect automatically to the domain with the old settings.

Restore of a system by means of backup



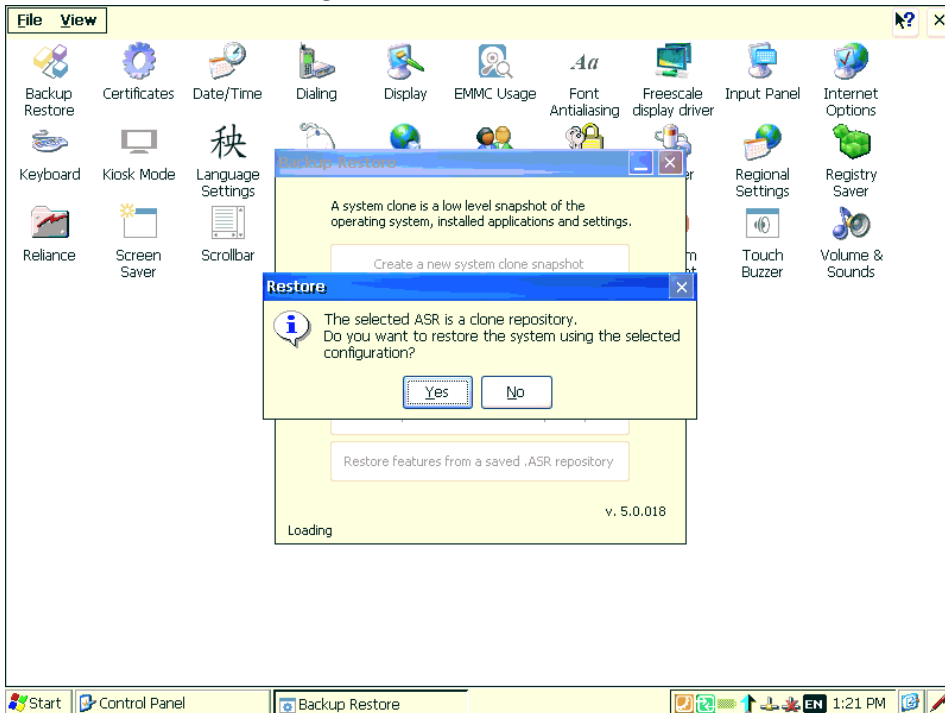
Select a backup file and click "OK".



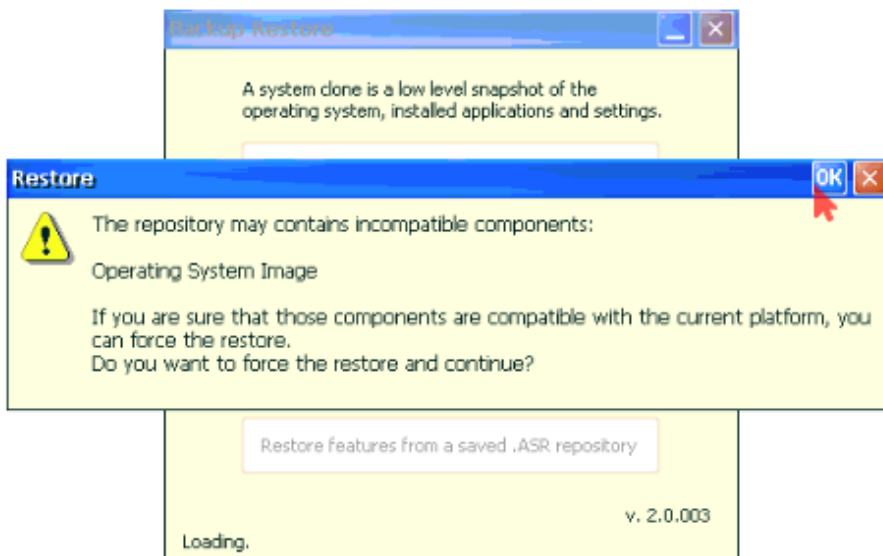
FAQ COMBIVIS studio HMI



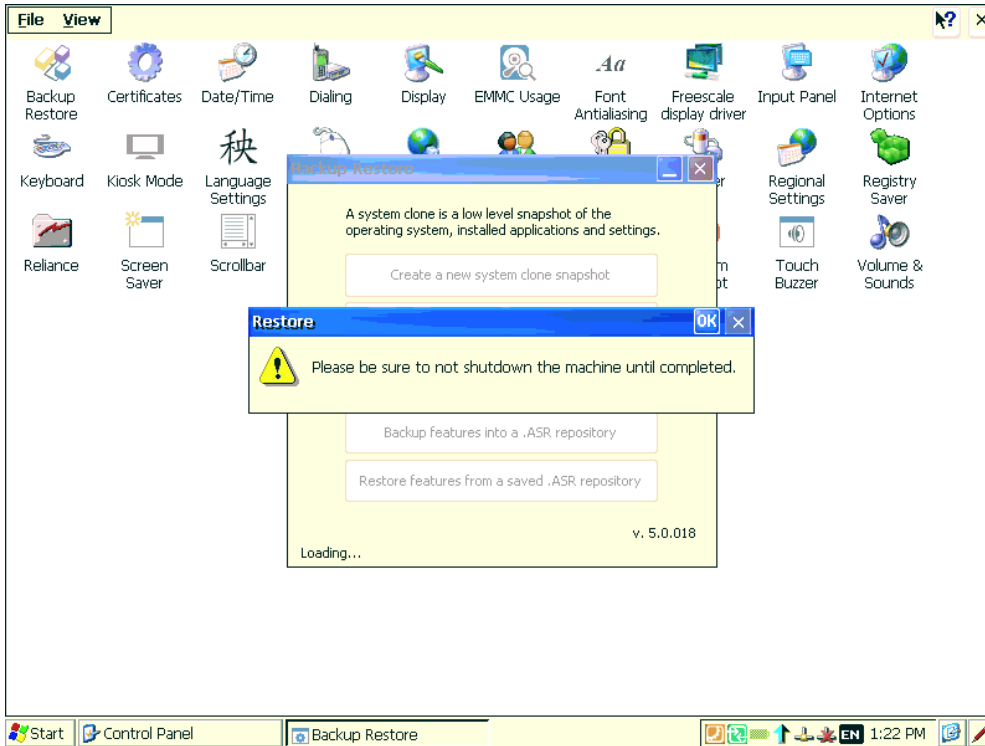
Confirm the restore message with "Yes".



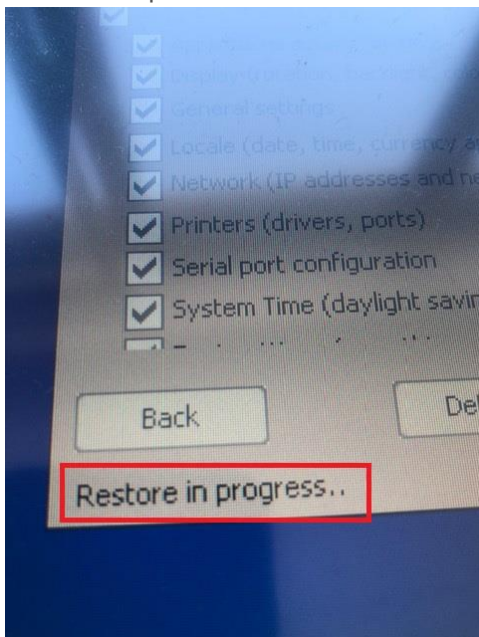
Also confirm the next messages during the process with "OK". These messages indicate that the operating system is changed and the system may not be stopped before the end of the process.



FAQ COMBIVIS studio HMI

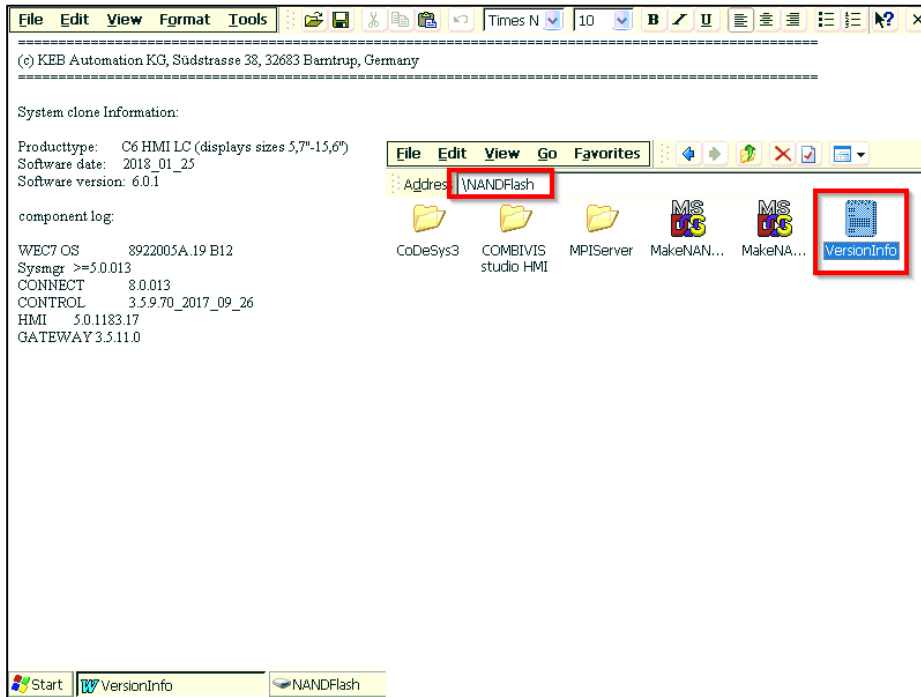


The restore process is started after that.

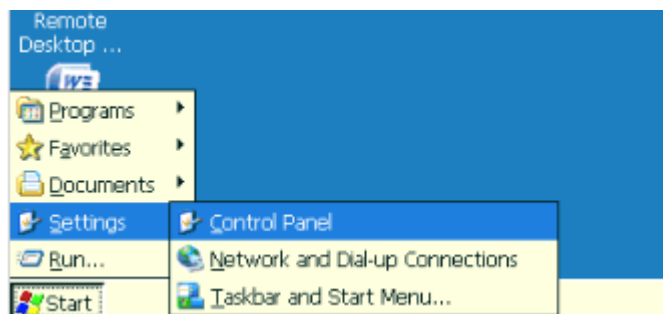


After the update, the currently installed version can be viewed in the displayed file "KEB VersionInfo.txt" (folder: NANDFlash) below. If you can't find the file on your HMI, so you have installed a version < V3.0.

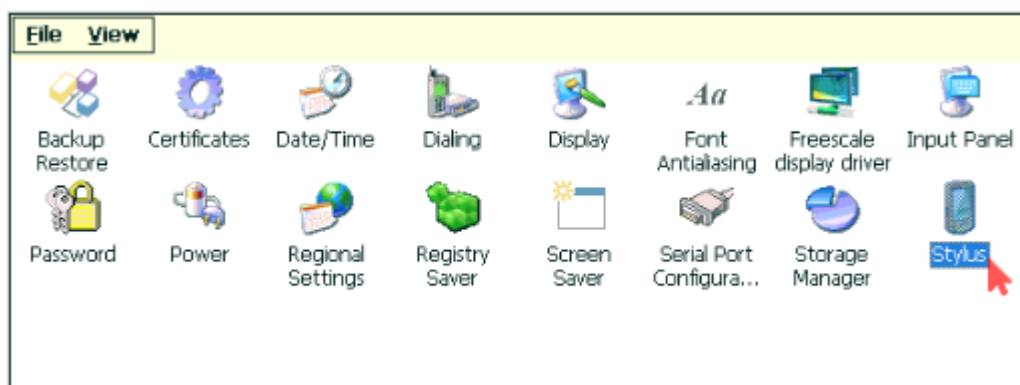
FAQ COMBIVIS studio HMI



After the update, you must recalibrate the touchscreen from the HMI. You will find this function in the settings of the control panel.



Afterwards you execute the displayed function "Stylus" for the recalibration please.

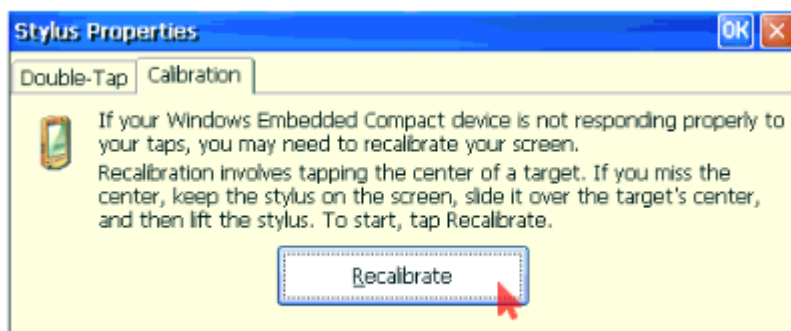


FAQ COMBIVIS studio HMI



It opens the following window in which you have to select the register “calibration” on top. After that you must execute the function via the button “Recalibrate”. Now the system leads you through the calibration routine until the HMI is recalibrated.

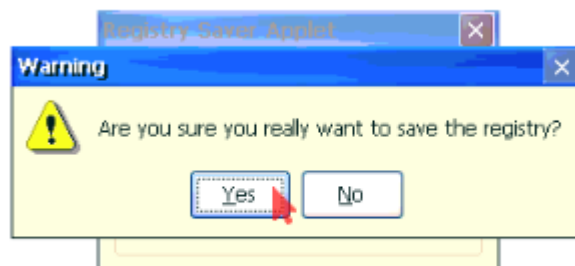
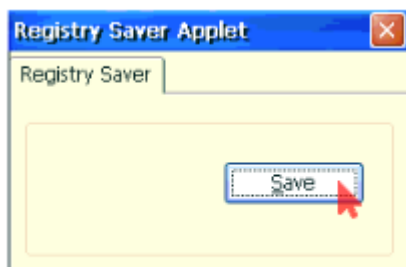
Note: Please don't execute the calibration routine with a connected mouse.



After you have recalibrated the display, you have to take over and secure the new data by the “Registry Saver” from the HMI, so that the data are retained after a restart.



You have to confirm the “Registry Saver” function two times, so that the data are safely taken over.



Disclaimer

KEB Automation KG reserves the right to change/adapt specifications and technical data without prior notification. The safety and warning reference specified in this manual is not exhaustive. Although the manual and the information contained in it is made with care, KEB does not accept responsibility for misprint or other errors or resulting damages. The marks and product names are trademarks or registered trademarks of the respective title owners.

The information contained in the technical documentation, as well as any user-specific advice in verbal or in written form are made to the best of our knowledge and information about the application. However, they are considered for information only without responsibility. This also applies to any violation of industrial property rights of a third-party.

Inspection of our units in view of their suitability for the intended use must be done generally by the user. Inspections are particularly necessary, if changes are executed, which serve for the further development or adaptation of our products to the applications (hardware, software or download lists). Inspections must be repeated completely, even if only parts of hardware, software or download lists are modified.

Application and use of our units in the target products is outside of our control and therefore lies exclusively in the area of responsibility of the user.

KEB Automation KG
Südstraße 38 • D-32683 Barntrup
fon: +49 5263 401-0 • fax: +49 5263 401-116
net: www.keb.de • mail: info@keb.de