



Ethernet connection of F5 Profinet Operator to PC

FAQ No.0008

Part	Version	Revision	Date	Status
en	6.2.3.0	001	2019-01-01	Released

Content

Introduction	2
Description	2
IP Scanner	9
Disclaimer	10

Introduction

The KEB COMBIVERT F5 Profinet Operator 00F5060-L100 can manage an Ethernet connection with a PC via the two PROFI-NET ports (X6C / X6D).

This document describes the procedure to connect a Windows PC and the operator by LAN cable and COMBIVIS 6.

Description

There are two ways:

1. Adjustment of IP-address via diagnosis interface (Rj.45-(HSP5) interface on the front side) by KEB USB-Serial converter No. 0058060-0040.
The information how to connect the diagnosis interface is described in the manual of COMBIVIS under „Help“.
→ Please go to step 4.
2. Adjustment of IP-address without diagnosis tool, only by LAN cable connection:
→ Please start with step 1.

Step 1: Bring operator in test mode

Adjust the node switches on the bottom side of the operator to “F” and “E”. Then put operator to the COMBIVERT F5.

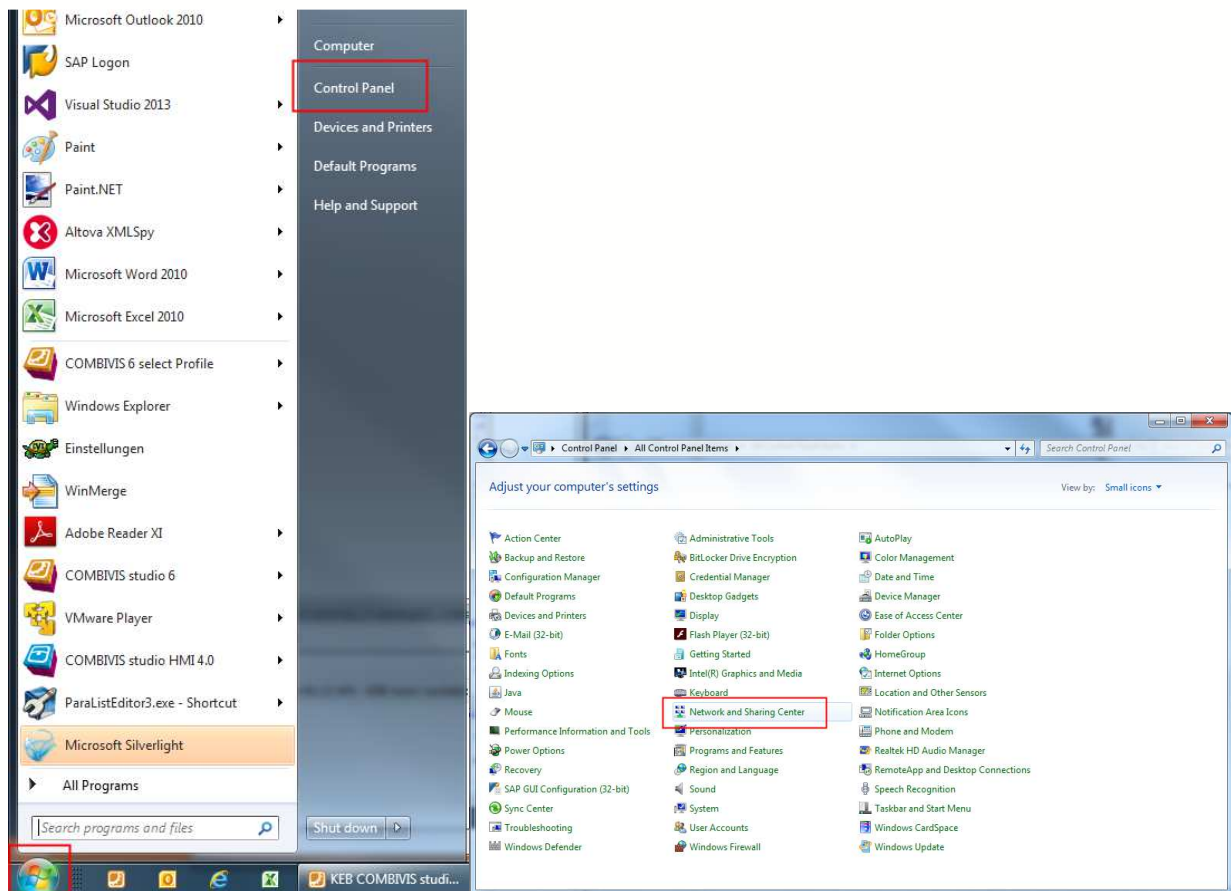


By the adjustment of “FHex” the operator gets the IP address 192.168.0.100!

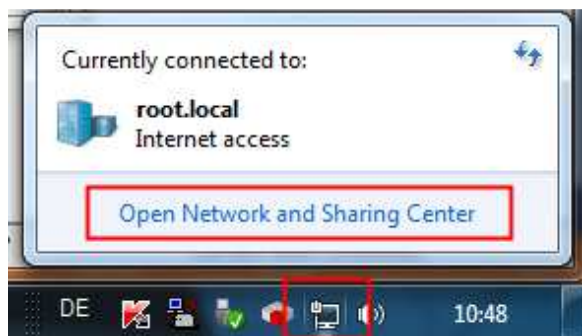
Step 2: Bring PC in test network

Adjust in own PC the IP-Address 192.168.0.1

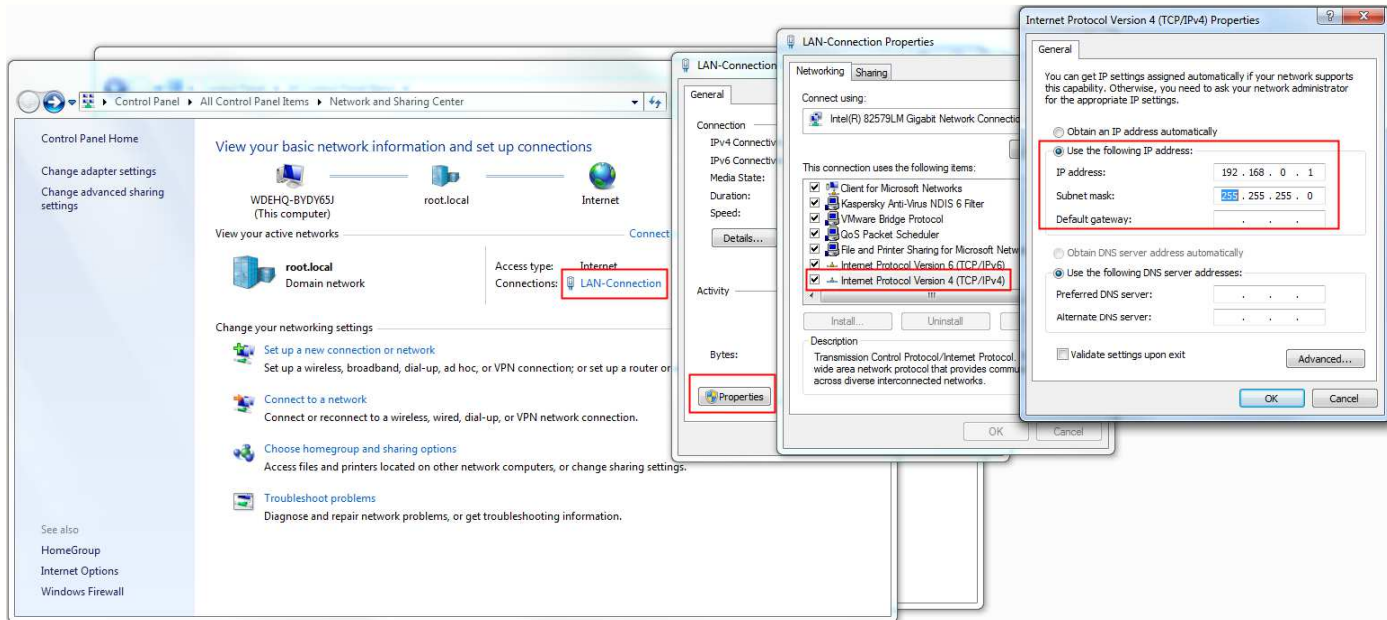
Go to start menu -> "Control Panel" -> "Network and Sharing Center" (e.g. Windows 7):



Or:

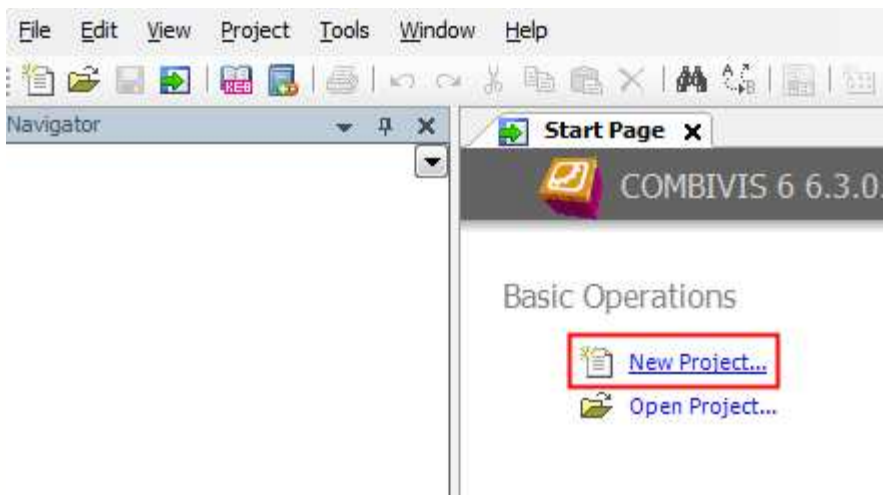


Then "LAN-Connection" -> "Properties" -> "Internet protocol version 4 (TCP/IP)" -> "Properties" -> "Use the following IP address" -> IP address set to 192.168.0.1 and the Subnet mask to 255.255.255.0

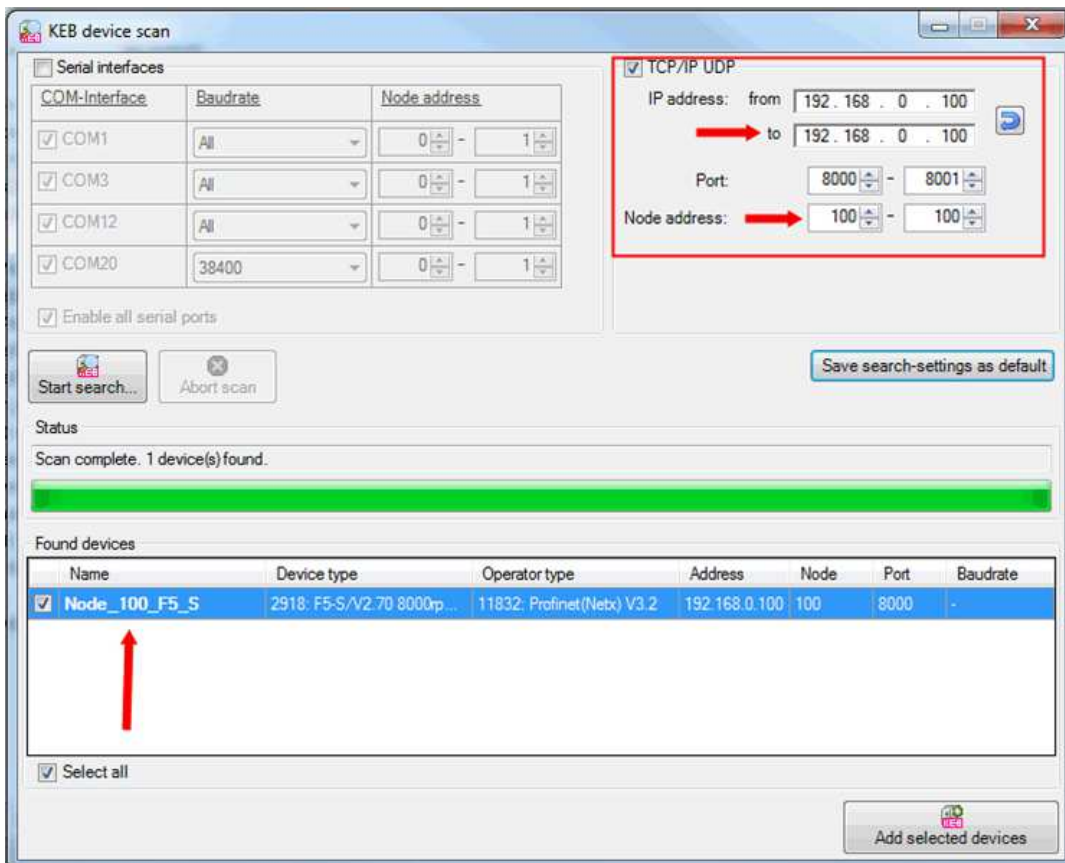
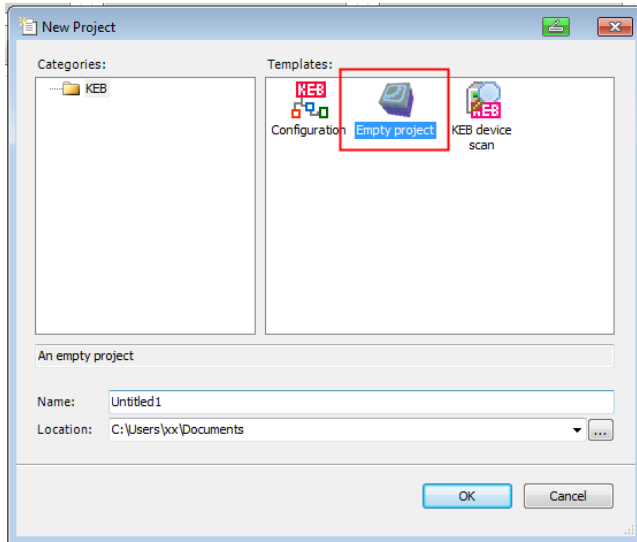


Step 3: Search KEB device

Search in COMBIVIS 6 the KEB device on **IP-Address 192.168.0.100** with **node address: 100**.
Adjust new project / open scan window:



FAQ COMBIVIS



Step 4: Adjust new IP-address

Adjust in the device parameter (editor operator parameters) a new individual IP-address.

Group-/Parameter-Name	Parameter value
OS: Operator system	
OS00: Operator type	11832: Profinet(Netx) V3.2
OS01: Password	Level 4 Password
OS02: Software date	2014,0117
OS05: Diag Baudrate	38400 Baud
OS10: MACAddress(Chassis)	FA01506Bh
OS11: NetX_FwVersion	3.4.36.2
OS12: Serial number(IM)	303125399
OS13: QS number	65535
OS14: NodeSwitchVal	254: KEBProdTest
OS15: Pnet_IPAddress	172.17.128.100
OS16: Din66019SlvAddr	100
OS17: MAC Address(Port0)	FA01506Ch
OS18: MAC Address(Port1)	FA01506Dh
OS19: Manufacturer_Id(IM)	0177h
OS20: Order_Id(IM) <0>	30302E66h
OS21: Hardware_Revision(IM)	1
OS22: Software_Revision(IM)	86.3.2.0
OS23: Revision_Counter(IM)	1
OS24: Profile_Id(IM)	Generic Device
OS25: Profile_Specific_Type(IM)	1
OS26: Pnet_IPMask	255.255.255.0
OS27: Pnet_IPGateway	0.0.0.0

Please note:

The displayed subnet mask in OS26 is valid only in the chosen test mode! For activating the subnet mask furthermore, it is needed to confirm the value in parameter OS26.

Means: please enter the actual value of OS26 again.

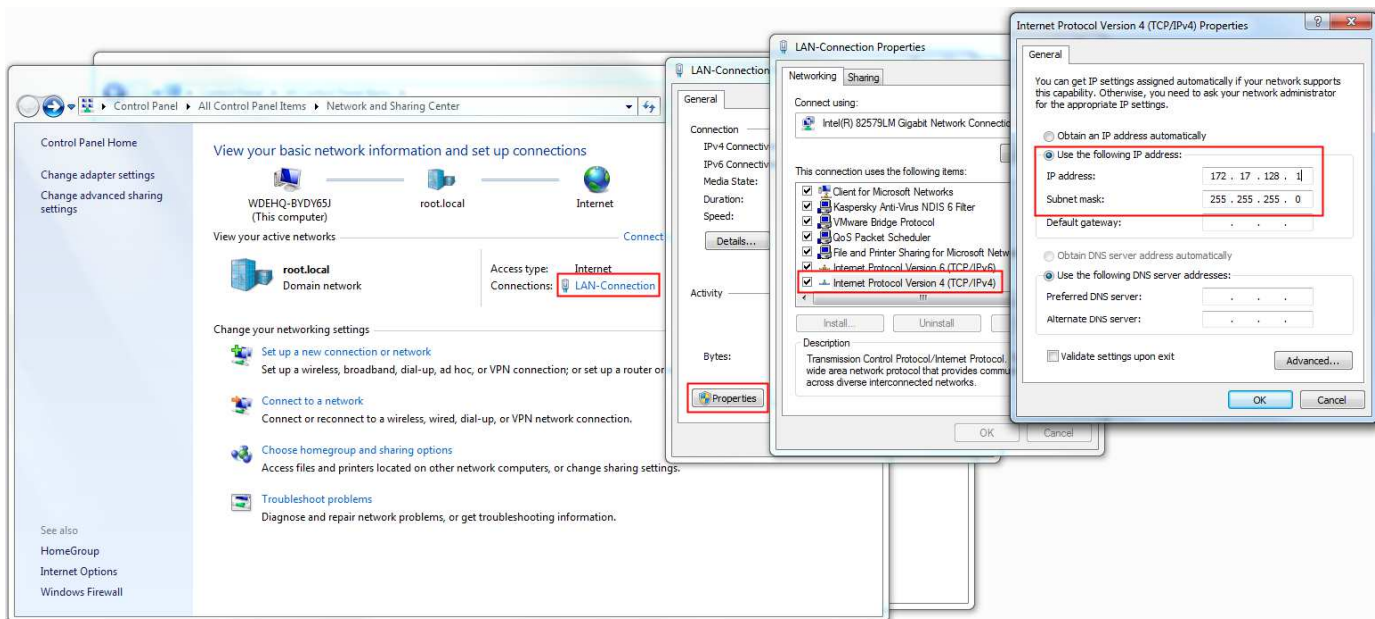
Step 5: Disengage the operator from test mode.

Please pull off the operator from COMBIVERT F5 and adjust on the node switches any node address in the range of "00h" to "EFh".



Step 6: bring the PC in the new address range.

Please open Network and Sharing Center (see step 2), -> “LAN-Connection” -> “Properties” -> “Internet protocol version 4 (TCP/IP)” -> “Properties” -> “Use the following IP address” -> Set IP address to 172.17.128.1 and Subnet mask to 255.255.255.0

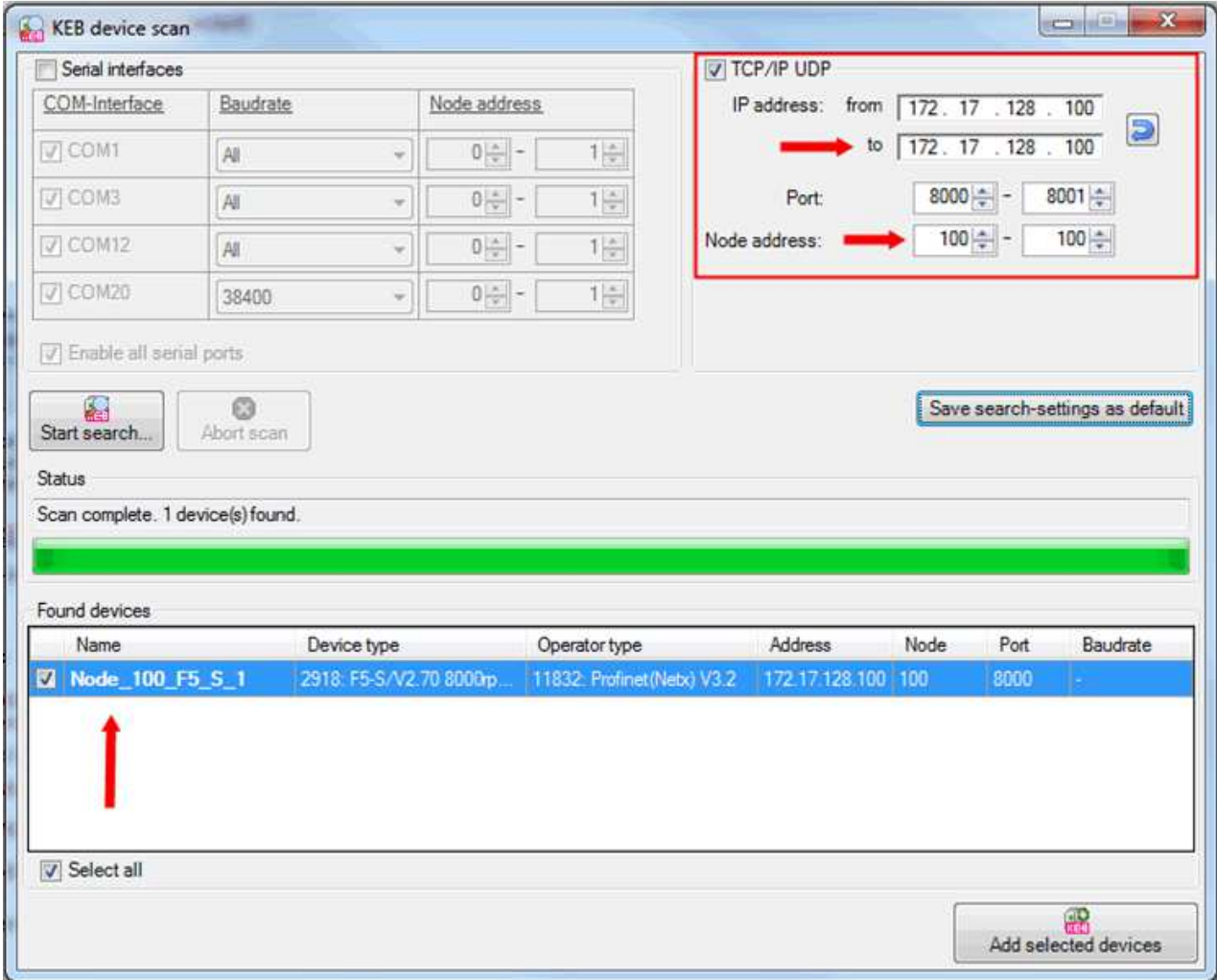


Step 7: Carry out a KEB device scan on the new address



Insert the new IP address in the COMBIVIS device scan and **IMPORTANT:** the last digits adjust as node address!

FAQ COMBIVIS

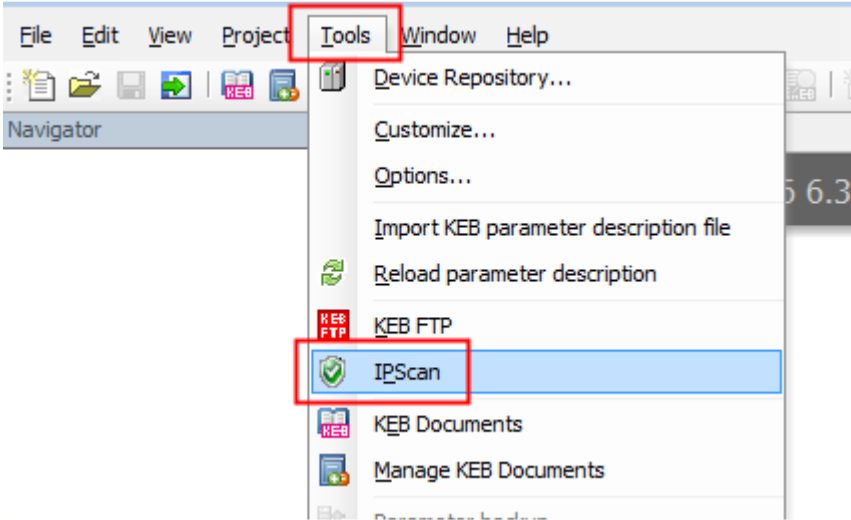


Now you have been connected with the COMBIVERT and adjusted an individual IP-address
From now it is reachable on this address.



IP Scanner

For searching of devices in the network the KEB COMBIVIS 6 IP-Scan can be used.



The screenshot shows the 'IP Scanner V3.0' application window. The title bar indicates the IP address 172.17.251.35 and the host MDEHQ-H38XN4J.prod.local. The interface includes buttons for 'Scan devices', 'Wink this device', 'Assign IP address', 'Info', and 'PW'. Below the buttons is a table with the following data:

Devices (4)	IpAddress	SubNetMask	MacAddress	Location
IP Scanner V3.0	172.17.251.35	255.255.252.0	00-24-D6-6F-1B-34	MDEHQ-H38XN4J.prod.local
C6 Compact II/V3.4	172.17.128.132	255.255.252.0	00-08-FA-01-4C-CD	YawController
C6 Compact II/V3.4	172.17.129.115	255.255.252.0	00-08-FA-01-28-B6	C6C2PRO_172.17.129.115
C6 Compact II/V3.4	172.17.129.108	255.255.252.0	00-08-FA-01-3F-E4	INV008_C62PRO_172.17.129.108

Disclaimer

KEB Automation KG reserves the right to change/adapt specifications and technical data without prior notification. The safety and warning reference specified in this manual is not exhaustive. Although the manual and the information contained in it is made with care, KEB does not accept responsibility for misprint or other errors or resulting damages. The marks and product names are trademarks or registered trademarks of the respective title owners.

The information contained in the technical documentation, as well as any user-specific advice in verbal or in written form are made to the best of our knowledge and information about the application. However, they are considered for information only without responsibility. This also applies to any violation of industrial property rights of a third-party.

Inspection of our units in view of their suitability for the intended use must be done generally by the user. Inspections are particularly necessary, if changes are executed, which serve for the further development or adaptation of our products to the applications (hardware, software or download lists). Inspections must be repeated completely, even if only parts of hardware, software or download lists are modified.

Application and use of our units in the target products is outside of our control and therefore lies exclusively in the area of responsibility of the user.

KEB Automation KG
Südstraße 38 • D-32683 Barntrup
fon: +49 5263 401-0 • fax: +49 5263 401-116
net: www.keb.de • mail: info@keb.de