



COMBIVERT EtherNet/IP Rockwell Setup

FAQ No.0002

| Part | Version | Revision | Datum | Status |
|------|---------|----------|------------|--------|
| en | 1.0 | 001 | 2019-12-20 | Draft |

Content

| | |
|--|----|
| Introduction | 2 |
| EDS File Installation..... | 2 |
| Addition of the KEB Module with the EDS file | 6 |
| Addition of the KEB module using a Generic Module..... | 10 |
| Disclaimer | 13 |

Introduction

The following document shows the steps involved for setting up the KEB S6-A and F6-A devices for firmware versions 2.6.x and later with a Rockwell Automation Programmable Logic Controller (PLC). In this example the following Rockwell Automation hardware and software were used:

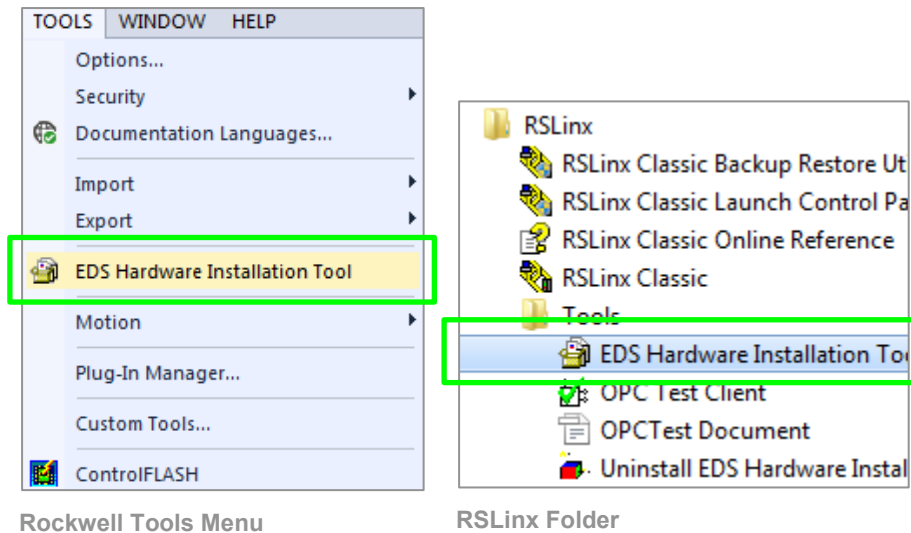
- CompactLogix™ 5380 PLC
- Studio 5000 Logix Designer® Version 31.00.00
- RSLinx
- EDS Hardware Installation Tool

EDS File Installation

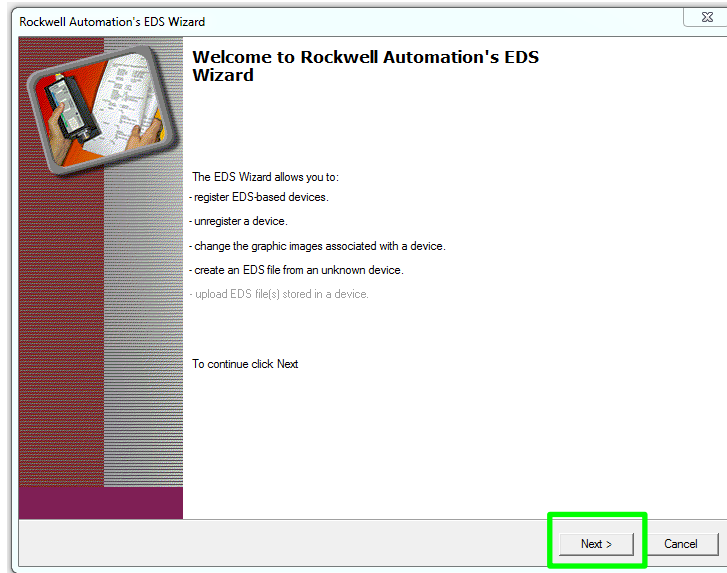
The EDS file (Electronic Data Sheet) is a text file that contains setup data for the KEB device. The extension of the file ends with *.eds. The file can be found on the KEB website here: [EDS file X6](#)

To register the device follows the following steps:

- Start the EDS Hardware Installation Tool
- In Logix Designer® go to the TOOLS menu
- You can also find it in the Tools folder in the RSLinx program
- Select the EDS Hardware Installation Tool as shown:

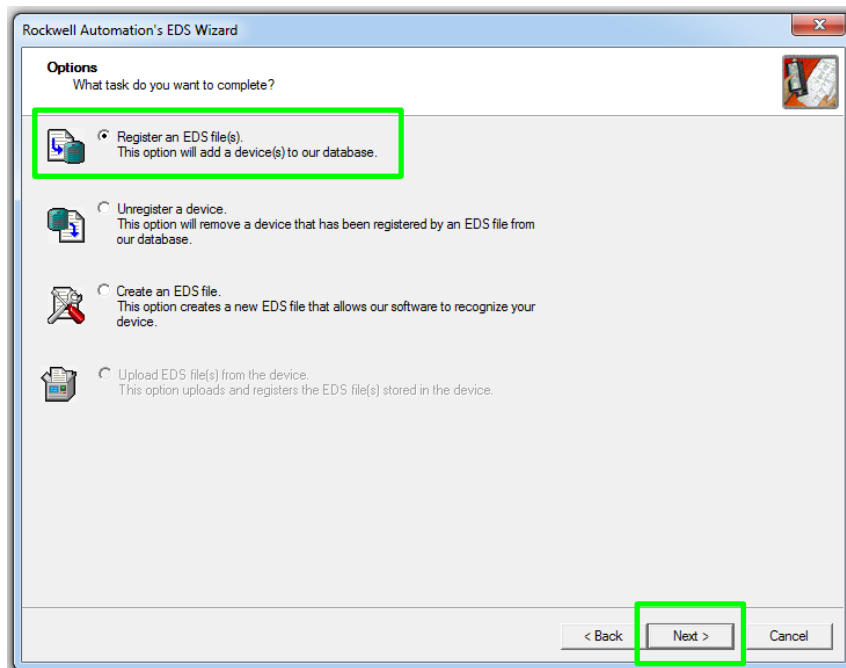


- Follow the prompts and click “Next” to install



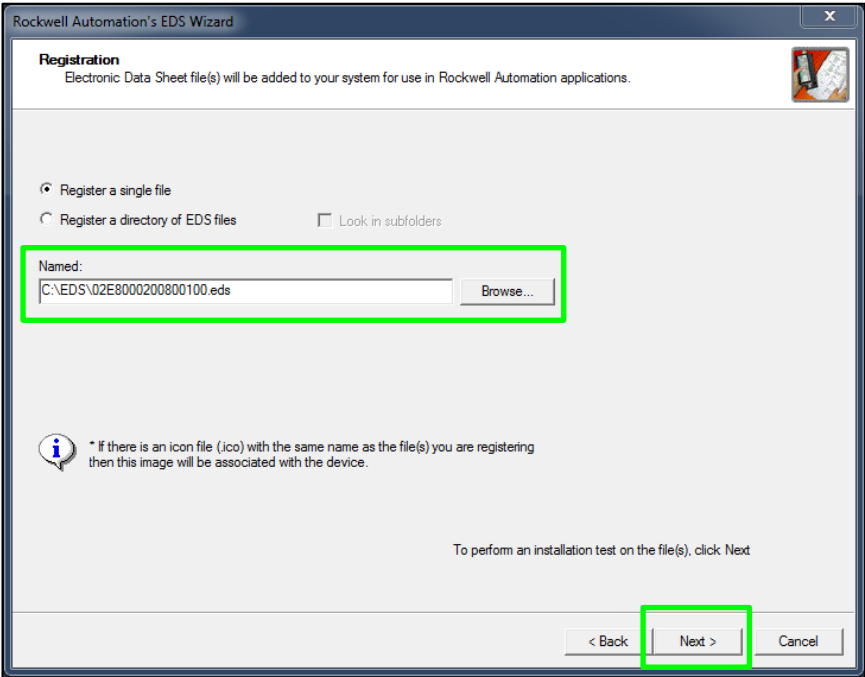
EDS Wizard

- Select Register an EDS file(s).



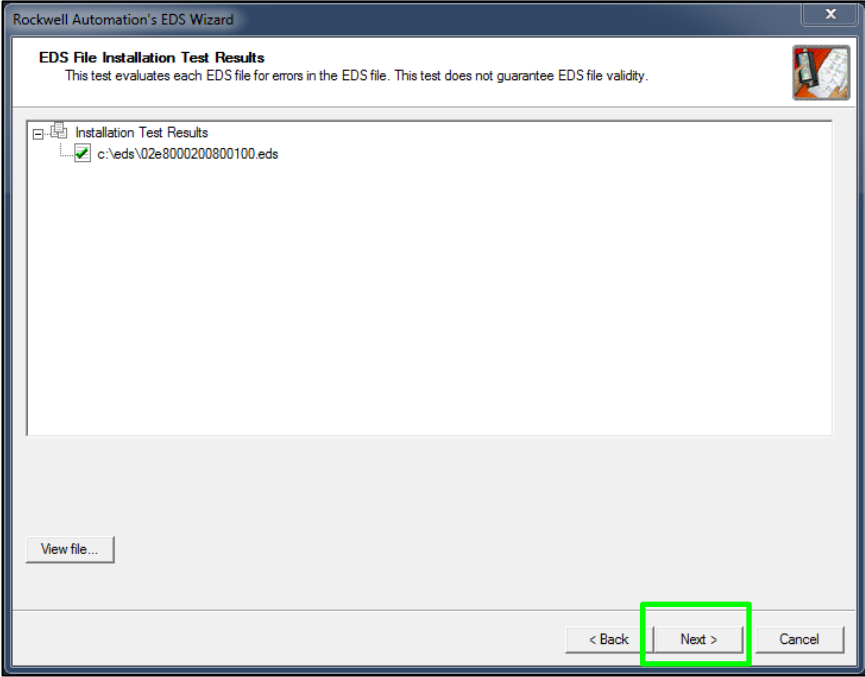
EDS Wizard Task

- Register a single file or a directory files. Enter the path where your file has been downloaded and click "Next":



EDS Wizard File Path Selection

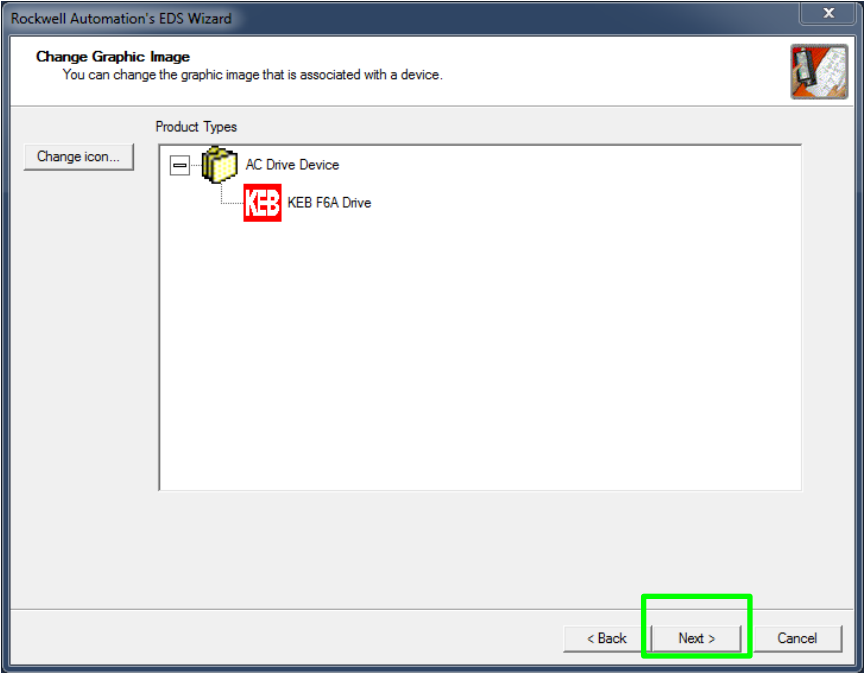
- Test Results should produce a green check mark indicating no errors. Click "Next" to continue:



EDS Wizard Test Results

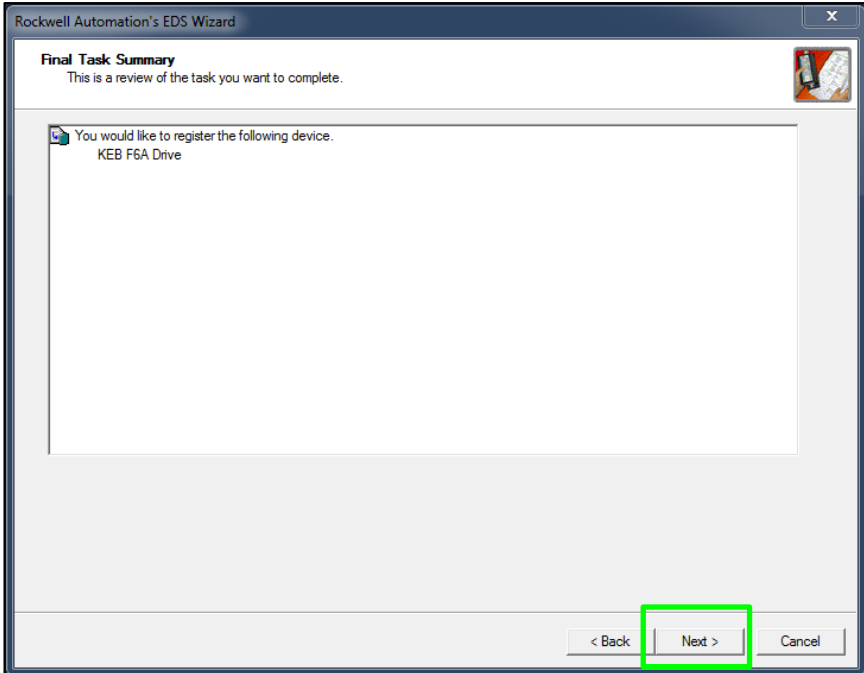


- The “KEB” icon should be shown under the Product Types:



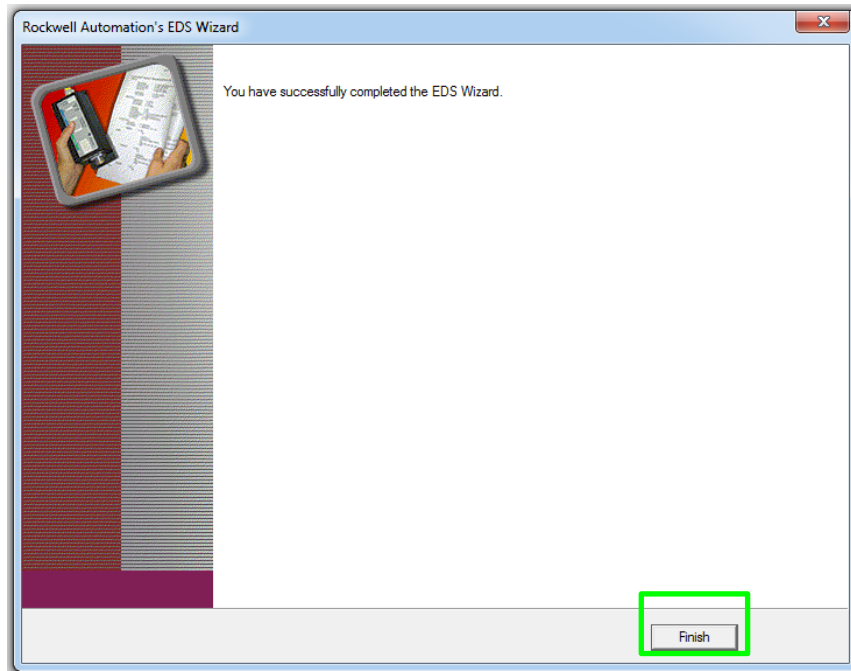
EDS Wizard Icon Selection

- Register the device by clicking “Next”



EDS Wizard Register Device

- After installation the following screen will be shown. Click “Finish” to exit the wizard.

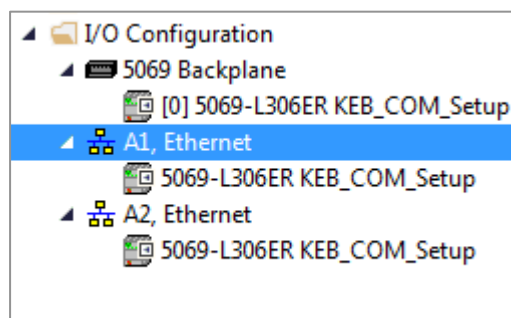


EDS Wizard Complete

- The EDS file has now been successfully installed. Read the next sections to add the module to a project.

Addition of the KEB Module with the EDS file

- Start a new project or open an existing project in Logix Designer®
- Add or create an Ethernet module if one doesn't exist

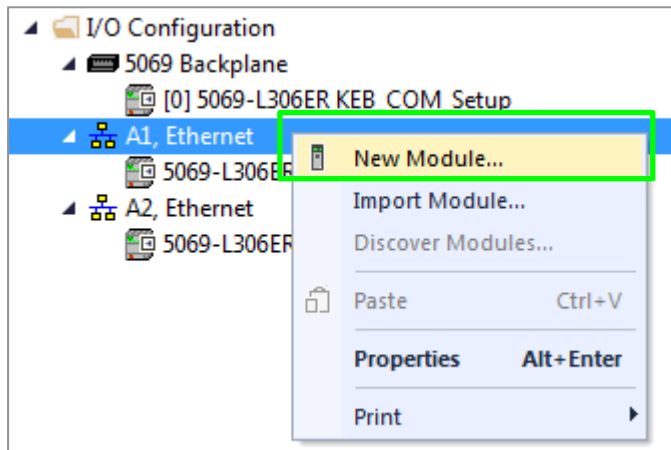


Ethernet Module

FAQ COMBIVERT

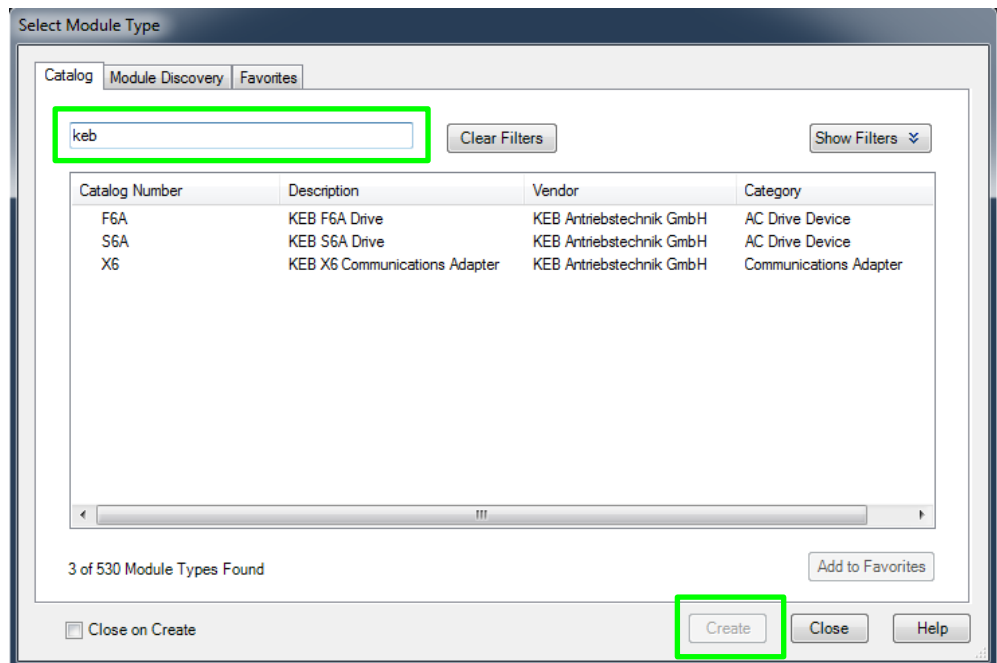


- Right click the Ethernet Module
- Select “New Module...”



Create New Module

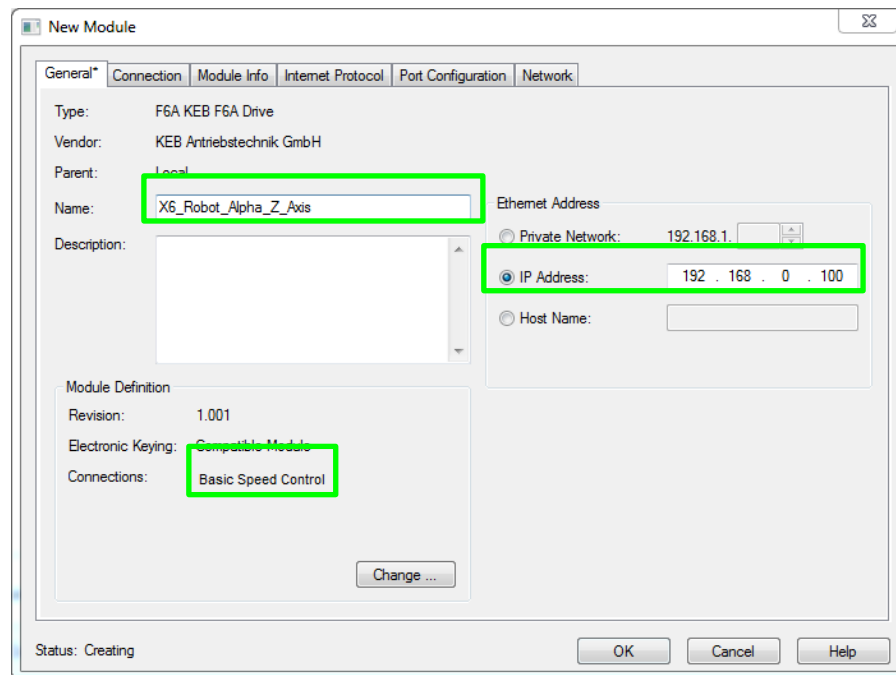
- Enter “keb” into the search box.
- Select the KEB module to add
- Click “Create” to make the module



Select Module Type

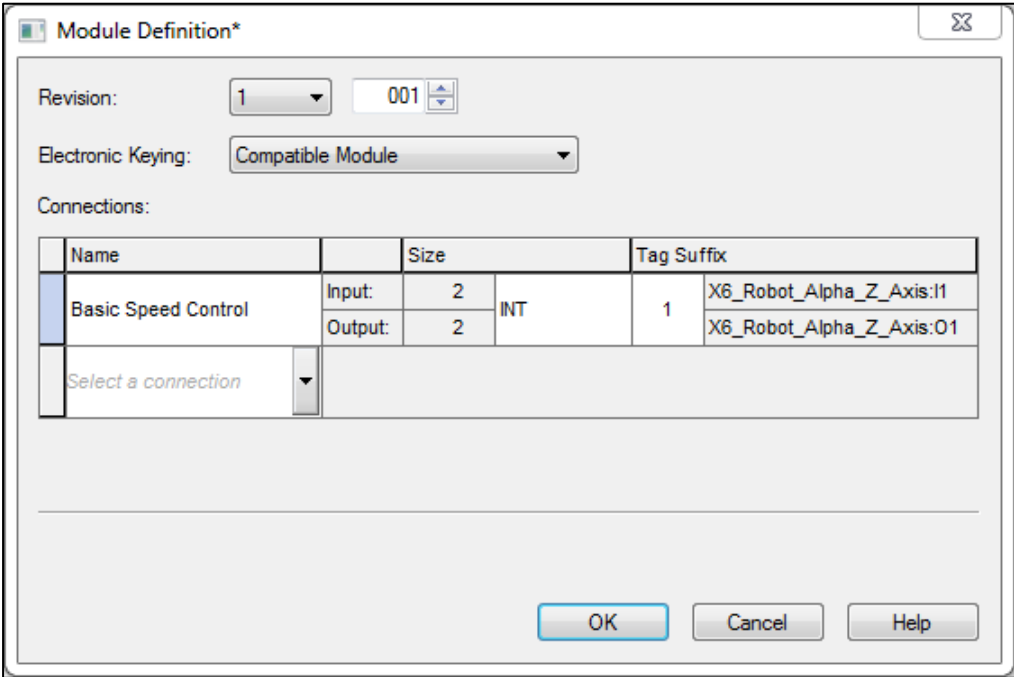
- In the next screen give a name to the module and an IP Address. The default IP Address for the KEB device is 192.168.0.100. It is a good idea to give the device a good descriptive

name to remember which device you will be working with. Example:
"KEB_X6_Robot_Alpha_Z_Axis"



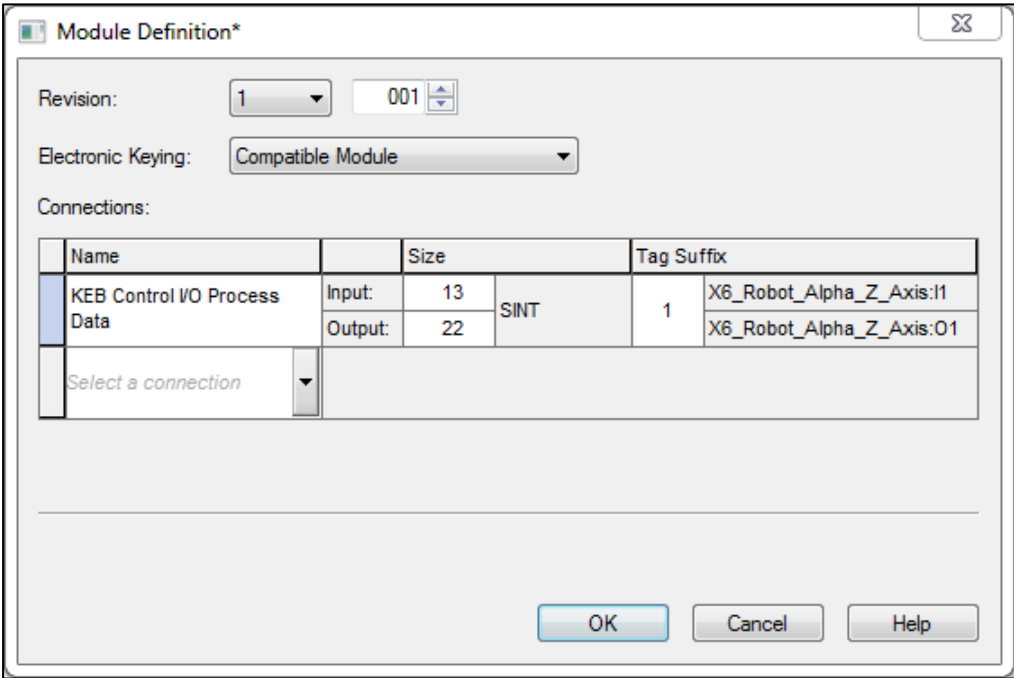
New Module Name and IP Address Entry

- The default connection is setup for you as Basic Speed Control.
- Select the "Change..." button to select the Assembly and size and type of data.
- Basic Speed Control has 4 bytes of Input and 4 bytes of Output. Use 2 INTs for the size.



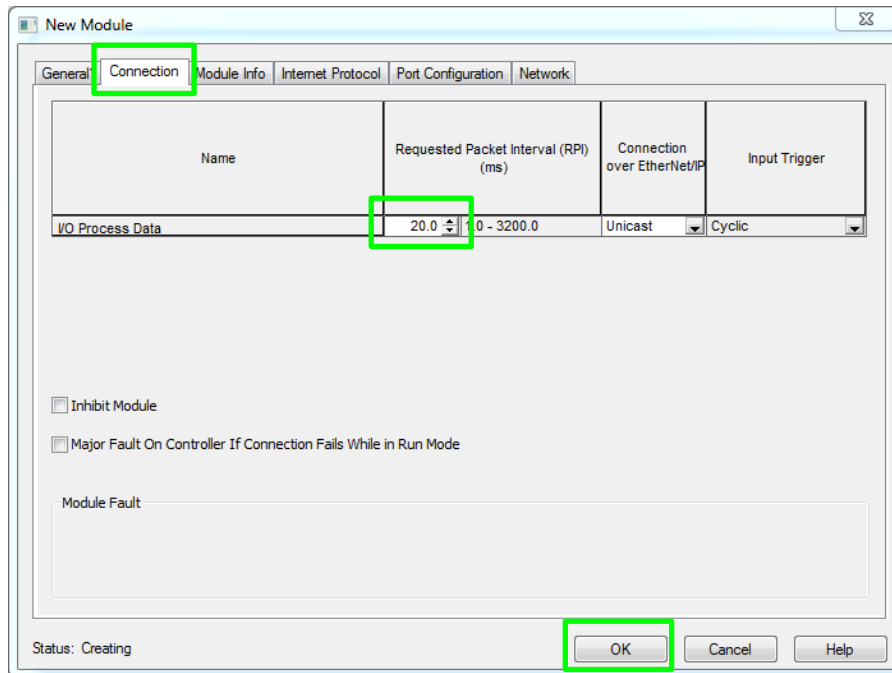
New Module Assembly Basic Speed Control

- KEB Control I/O Process Data by default uses 13 Bytes Input and 22 Bytes Output. Use SINT for the type.



New Module KEB Control

- Select the “Connection” tab.



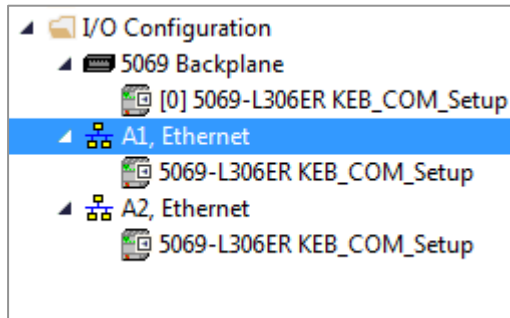
New Module RPI

- Set up your Requested Packet Interval time in milliseconds. By default it is set to 20.0ms.
- Click “OK” to add the module.

Addition of the KEB module using a Generic Module

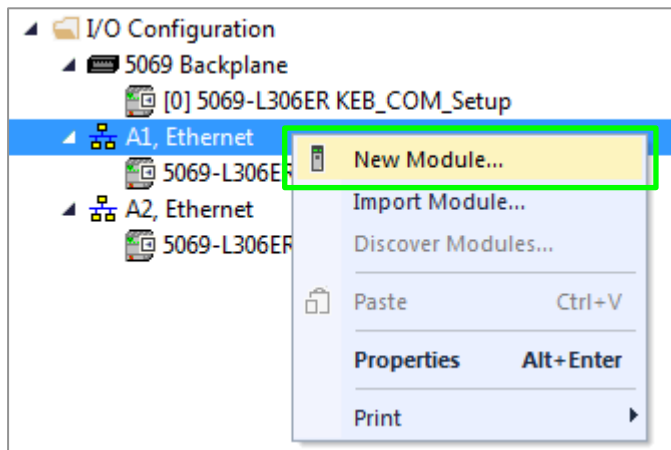
This sets up the device using a generic module with the KEB Control 100/101 Assemblies. This can be used if you need a quick simple I/O connection or do not have the necessary .EDS file for device setup.

- Start a new project or open an existing project in Logix Designer®
- Add or create an Ethernet module if one doesn't exist



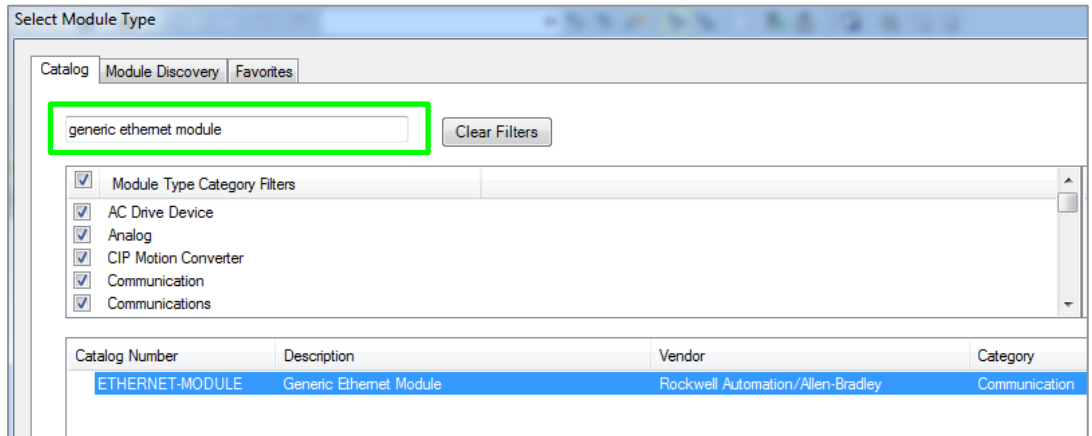
Ethernet Module

- Right click the Ethernet Module
- Select “New Module...”



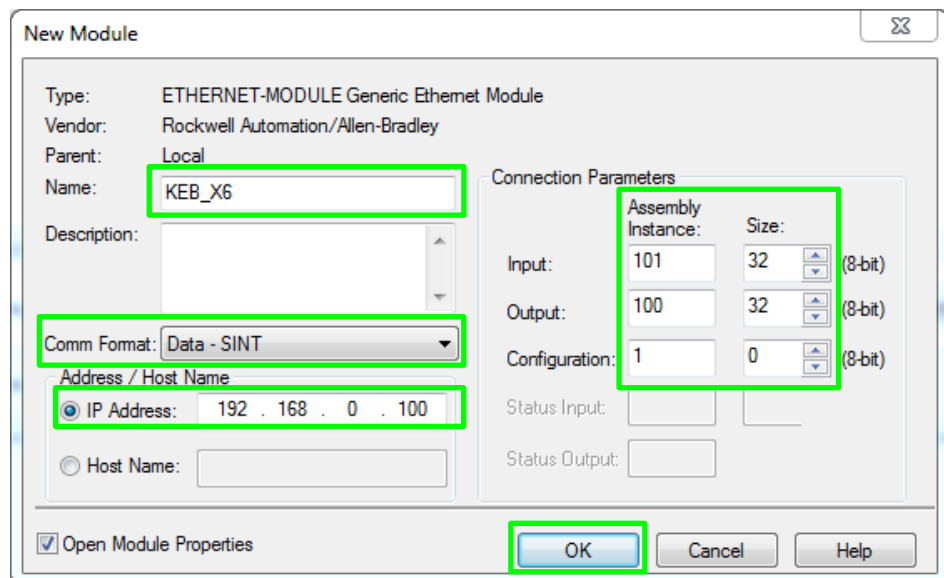
Create New Generic Module

- Enter “generic Ethernet module” into the search box.
- Select the Generic Ethernet Module to add.
- Click “Create” to make the module.



Create Generic Ethernet Module

- Fill in the Name and IP Address
- Make the Comm Format and Connection Parameters as follows:



Setup Generic Ethernet Module

- Click OK to accept the module settings.



Disclaimer

KEB Automation KG reserves the right to change/adapt specifications and technical data without prior notification. The safety and warning reference specified in this manual is not exhaustive. Although the manual and the information contained in it is made with care, KEB does not accept responsibility for misprint or other errors or resulting damages. The marks and product names are trademarks or registered trademarks of the respective title owners.

The information contained in the technical documentation, as well as any user-specific advice in verbal or in written form are made to the best of our knowledge and information about the application. However, they are considered for information only without responsibility. This also applies to any violation of industrial property rights of a third-party.

Inspection of our units in view of their suitability for the intended use must be done generally by the user. Inspections are particular necessary, if changes are executed, which serve for the further development or adaption of our products to the applications (hardware, software or download lists). Inspections must be repeated completely, even if only parts of hardware, software or download lists are modified.

Application and use of our units in the target products is outside of our control and therefore lies exclusively in the area of responsibility of the user.

KEB Automation KG
Südstraße 38 • D-32683 Barntrup
fon: +49 5263 401-0 • fax: +49 5263 401-116
net: www.keb.de • mail: info@keb.de