

# 1 Installation C6 X1-T2

## 1.1 Basic Safety Instructions

### NOTICE

#### Hazards and risks through ignorance!

- Read the instructions for use.
- Observe the safety and warning instructions.
- Ask if something is unclear.

## 1.2 Mounting monitor holder

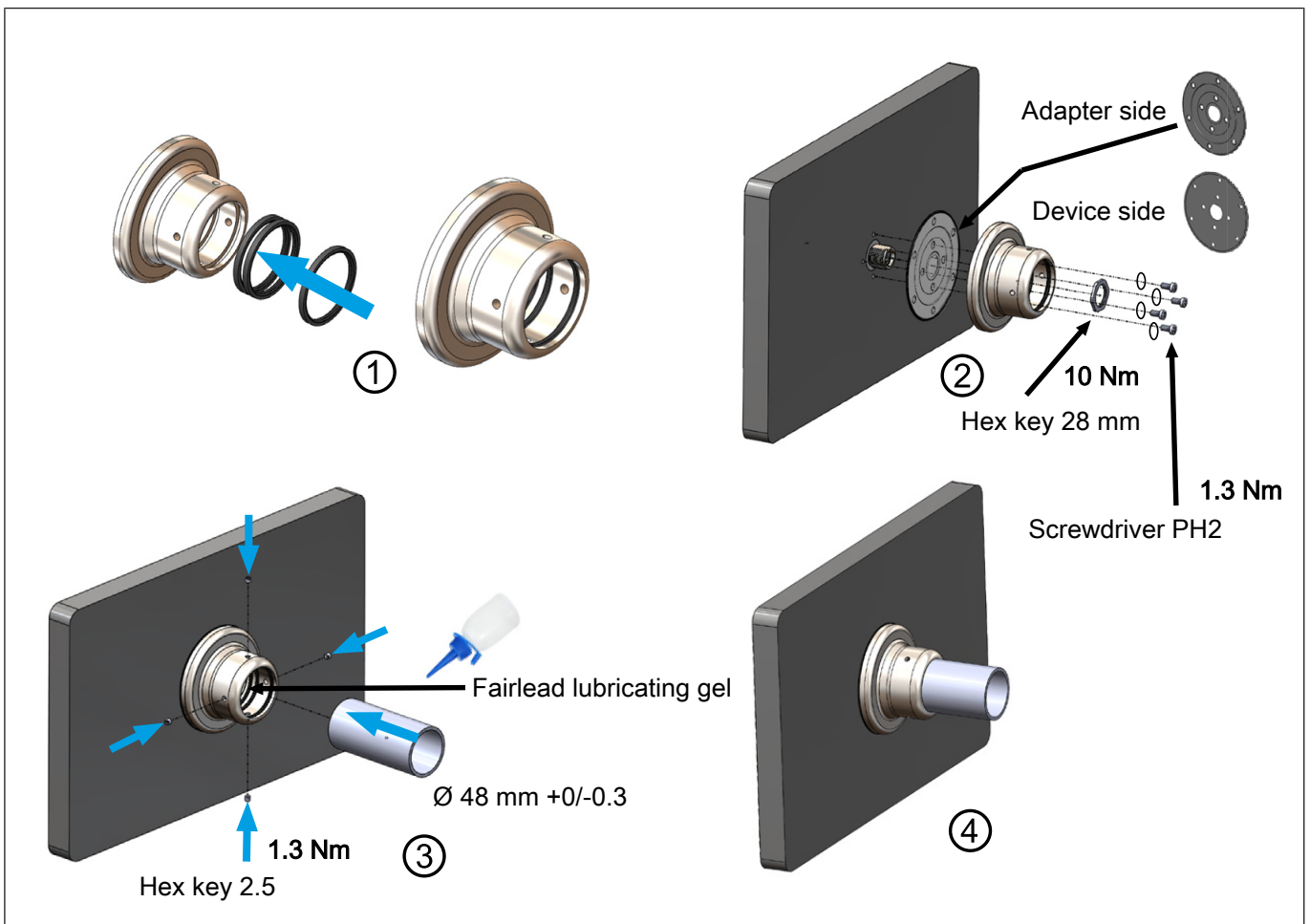


Fig. 1: Mounting monitor holder C6 X1-T2

- |                                      |                        |
|--------------------------------------|------------------------|
| ① Insert sealing rings               | ② Screw on the bracket |
| ③ Insert and fasten the holding tube | ④ Finished bracket     |

### NOTICE

#### Ingress of water or dust!

- To ensure IP67 and TYPE 1 or 12 or 4X the assembly instructions must be followed scrupulously.

**NOTICE****Unpredictable malfunctions**

- Installation must be carried out by specialised personnel with the necessary skills.
- Only use this mounting system for its intended purpose as described in this manual.
- Only use original manufacturer parts.
- It is the customer's responsibility to ensure that all mounting systems are correctly assembled and installed using the appropriate instructions.

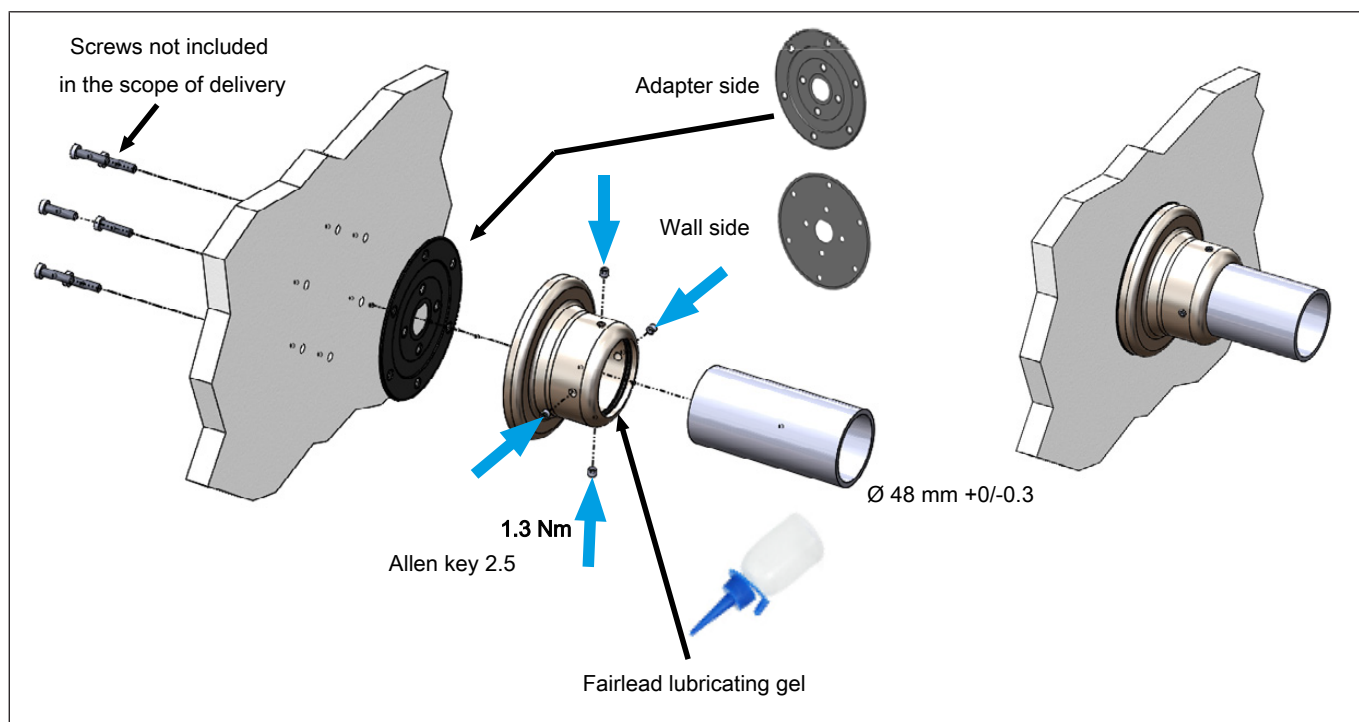
**1.3 Wall-mounting bracket**

Fig. 2: Wall-mounting bracket C6 X1-T2

**NOTICE****No secure hold guaranteed!**

- The screws (not included in the scope of delivery) must be inserted into the bracket for a minimum depth of 4 mm.

## 1.4 Dimensions

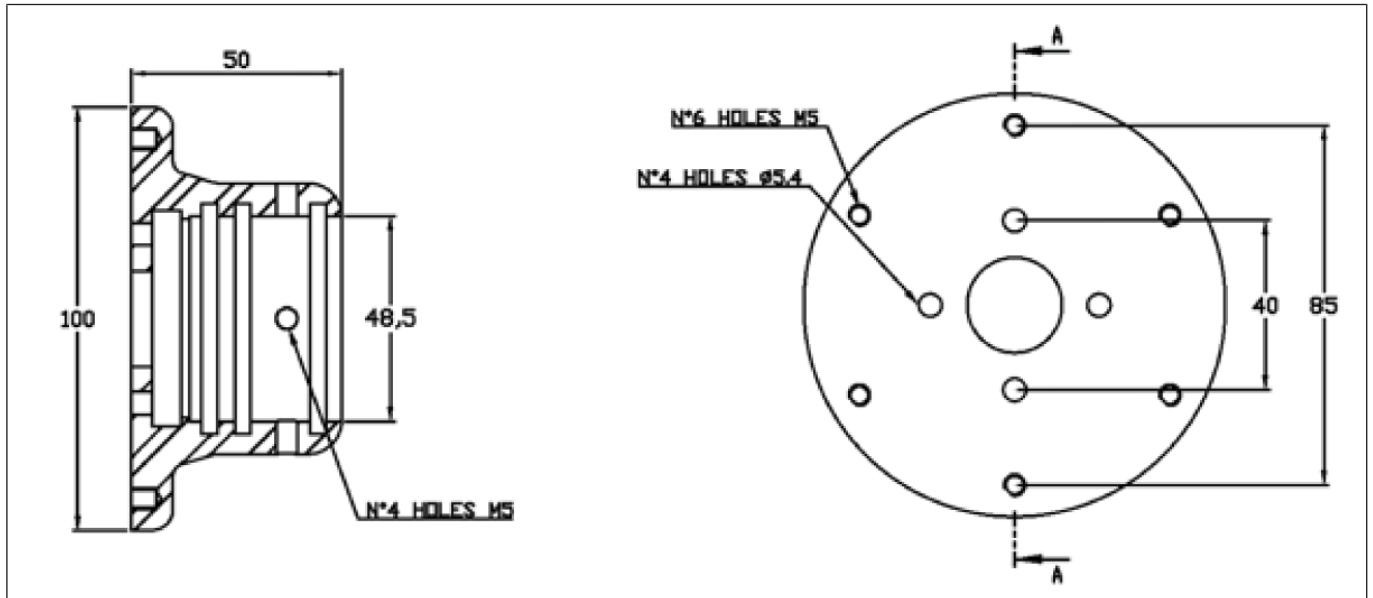


Fig. 3: Dimensions C6 X1-T2