



Add the Chinese font in WinCE panels FAQ No.0001

Part	Version	Revision	Date	Status
en	4.0.1150.48	004	2019-07-12	Released

Content

Introduction	2
Implementation	2
Copy font in directory	2
Activate the font linking	2
Create the registry keys	3
Save registry	5
Activate the unicode in the project	5
Disclaimer	6

Introduction

This document describes the procedure that allows the addition of the Chinese font to WinCE panels.

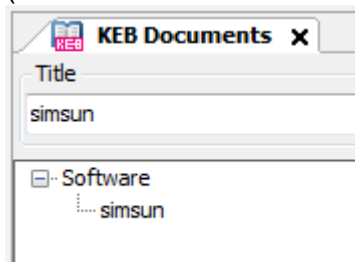
Implementation

Copy font in directory

- Instruction for **CE x86 panels**
 - Copy the “**SIMSUN.ttc**” font in the folder **\windows**

- Instruction for **C6 HMI Panels**
 - Create the folder “**CopyToWindows**” in **\MMCMemory**
 - Copy the “**SIMSUN.ttc**” font in the folder “**CopyToWindows**”

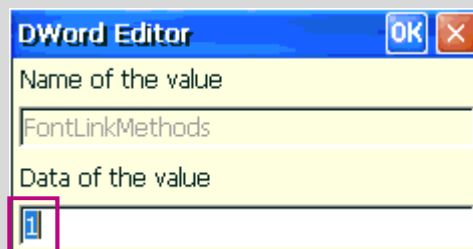
Note: The necessary file is available at the download-area of COMBIVIS studio 6.
(A valid license is mandatory)

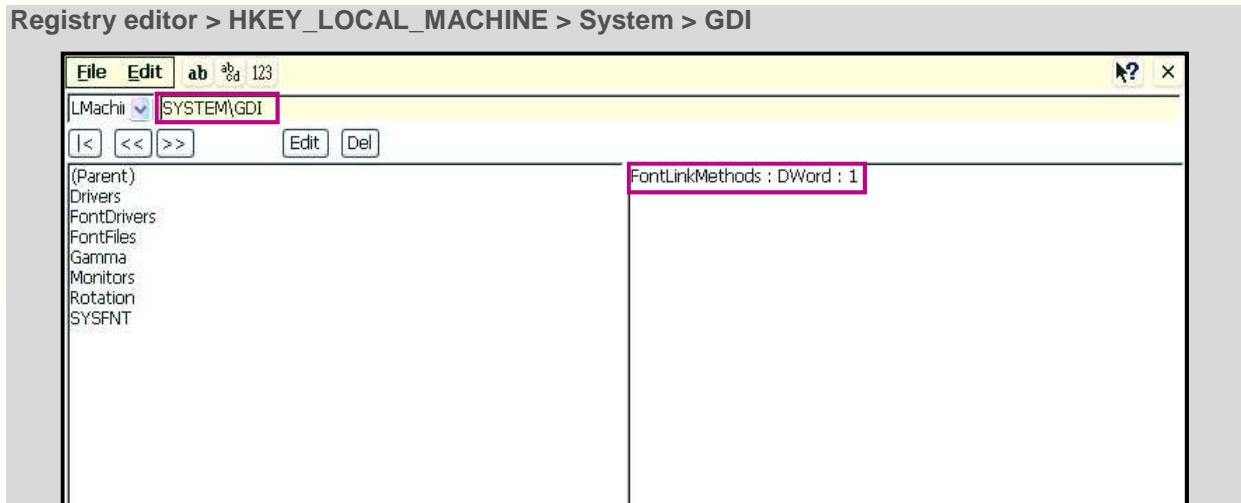


Activate the font linking

- Go to the folder **HKEY_LOCAL_MACHINE\System\GDI**
- Select “**Edit → New DWORD**” and create the following entry:
FontLinkMethods: REG_DWORD 1

Registry editor > HKEY_LOCAL_MACHINE\System\GDI

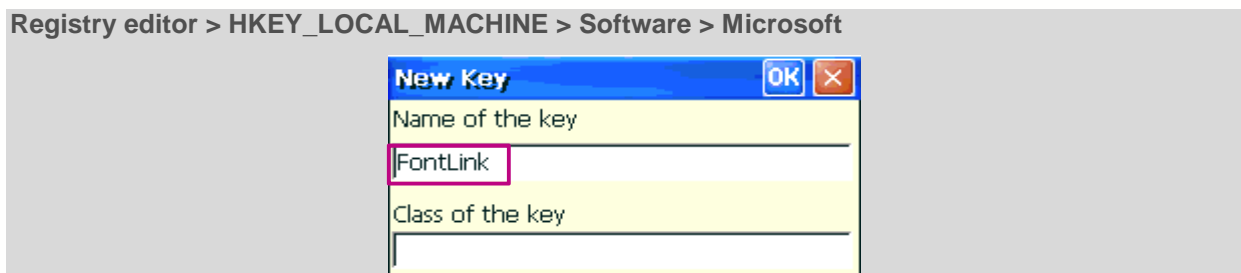




Create the registry keys

Create the following **registry keys** in order to redirect the glyphs' not found in all the mentioned font to the Chinese „**SIMSUN.ttc**“:

- Go to the folder **HKEY_LOCAL_MACHINE\Software\Microsoft**
- Select **“Edit → New Key”** and create the following entry:
FontLink (leave the field “Class of the Key” empty)

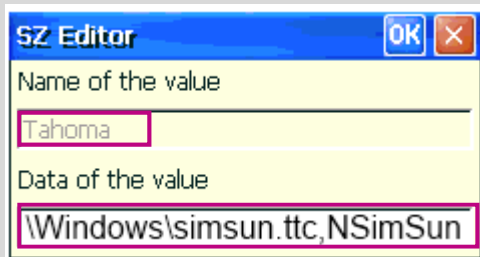


- Go to the folder **HKEY_LOCAL_MACHINE\Software\Microsoft\FontLink**
- Select **“Edit → New Key”** and create the following entry **SystemLink** (leave the field “Class of the Key” empty)
- Go to the folder **KEY_LOCAL_MACHINE\Software\Microsoft\FontLink\SystemLink**
- Select **“Edit → New SZ”** and create the following entries:
 - Name of the value: **Tahoma**
 - Data of the value: **Windows\simsun.ttc,NSimSun**

FAQ COMBIVIS studio HMI



Registry editor > KEY_LOCAL_MACHINE > Software > Microsoft > FontLink > SystemLink

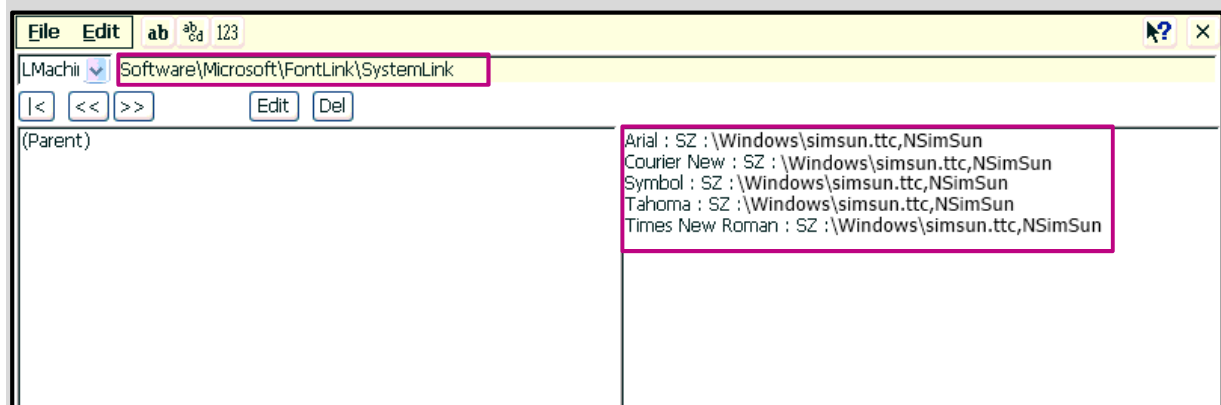


- Repeat this operation for all the following fonts

- Arial : REG_SZ \\Windows\\simsun.ttc,NSimSun
- Times New Roman : REG_SZ \\Windows\\simsun.ttc,NSimSun
- Tahoma: REG_SZ \\Windows\\simsun.ttc,NSimSun
- Courier New : REG_SZ \\Windows\\simsun.ttc,NSimSun
- Symbol : REG_SZ \\Windows\\simsun.ttc,NSimSun

Note: If you used other fonts in the project, you will have to repeat the operation also for all these fonts.

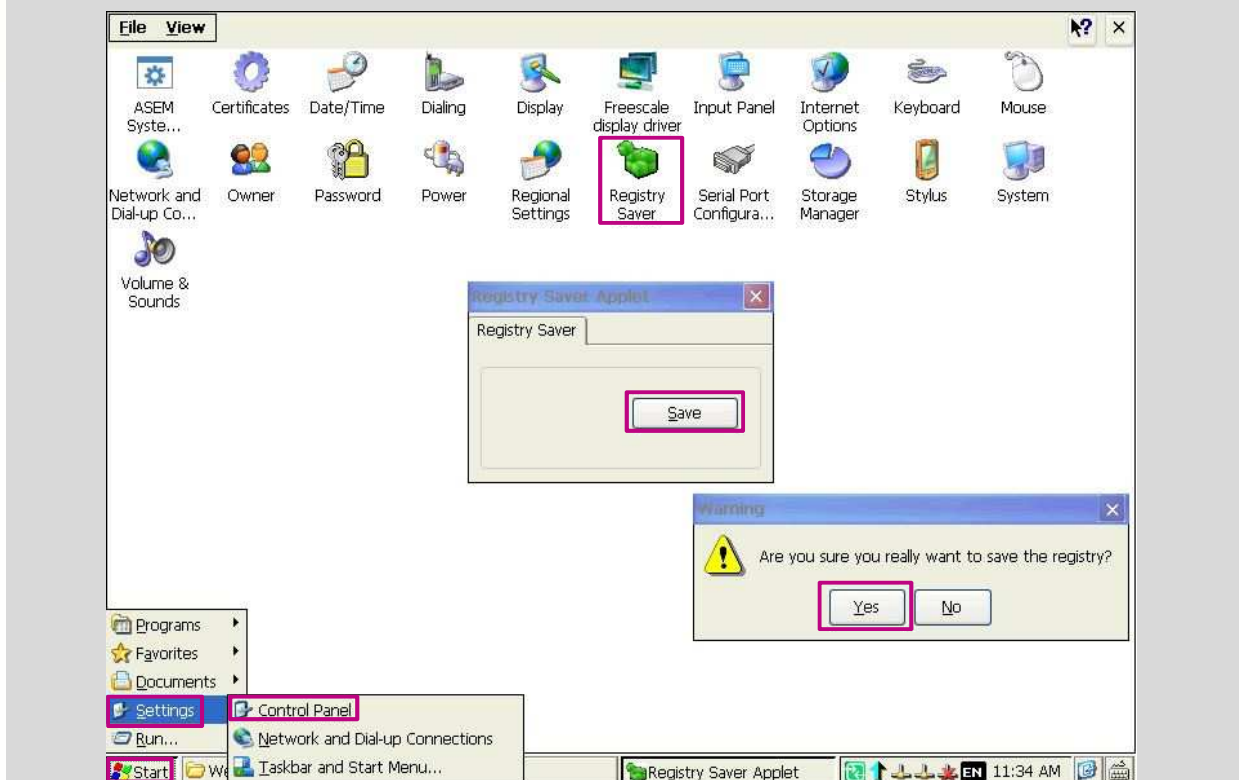
Registry editor > KEY_LOCAL_MACHINE > Software > Microsoft > FontLink > SystemLink



Save registry

- Use the function **“Registry Saver”** to save the registry before you restart the panel!
(The function can be found in **“Setting → Control Panel”**)

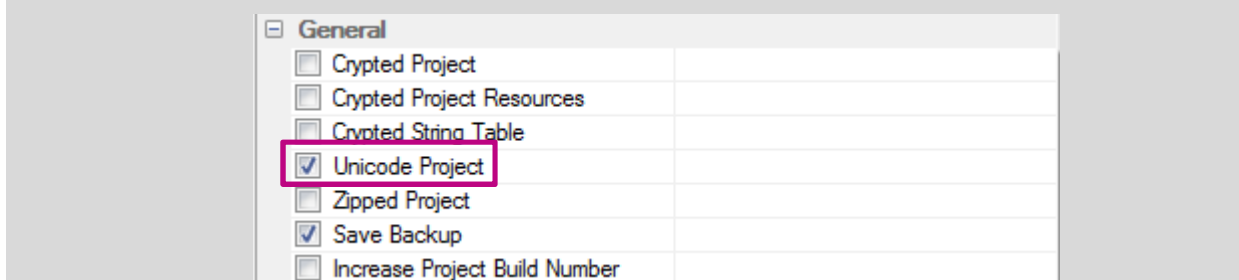
Start > Settings > Control Panel > Registry Saver



Activate the unicode in the project

Use **“Unicode Project”** to enable the unicode in the HMI project.

„Projectname“ > Properties



Disclaimer

KEB Automation KG reserves the right to change/adapt specifications and technical data without prior notification. The safety and warning reference specified in this manual is not exhaustive. Although the manual and the information contained in it is made with care, KEB does not accept responsibility for misprint or other errors or resulting damages. The marks and product names are trademarks or registered trademarks of the respective title owners.

The information contained in the technical documentation, as well as any user-specific advice in verbal or in written form are made to the best of our knowledge and information about the application. However, they are considered for information only without responsibility. This also applies to any violation of industrial property rights of a third-party.

Inspection of our units in view of their suitability for the intended use must be done generally by the user. Inspections are particular necessary, if changes are executed, which serve for the further development or adaption of our products to the applications (hardware, software or download lists). Inspections must be repeated completely, even if only parts of hardware, software or download lists are modified.

Application and use of our units in the target products is outside of our control and therefore lies exclusively in the area of responsibility of the user.

KEB Automation KG
Südstraße 38 • D-32683 Barntrup
fon: +49 5263 401-0 • fax: +49 5263 401-116
net: www.keb.de • mail: info@keb.de