



Bios Settings

FAQ No.0004

| Part | Version | Revision | Date | Status |
|------|----------|----------|------------|----------|
| en | 3.5.9.70 | 001 | 2019-01-01 | Released |

Content

| | |
|--|----|
| Introduction | 2 |
| Access the BIOS | 2 |
| BIOS Settings for IPC C6 Perform | 3 |
| Area 'Main' | 3 |
| Area 'Advanced' | 4 |
| CPU Control | 5 |
| Video settings | 7 |
| Integrated devices | 8 |
| USB support | 10 |
| Additional Areas | 13 |
| Area 'Exit' | 15 |
| BIOS settings for IPC C6 Econ | 16 |
| Area 'Main' | 16 |
| Area 'Advanced' | 18 |
| Dothan CPU Control Sub-Menu | 21 |
| Processor Power Management C6 ECON (1Ghz Celeron) | 22 |
| Processor Power Management C6 BM2 (2Ghz Pentium M 760) | 22 |
| Video settings | 23 |
| Additional areas | 27 |
| Area 'Exit' | 28 |
| Disclaimer | 29 |



Introduction

As it is possible, that an IPC's BIOS settings get relocated this guide is meant to provide a guideline, which settings are to be made in order to have the IPC set up as desired.

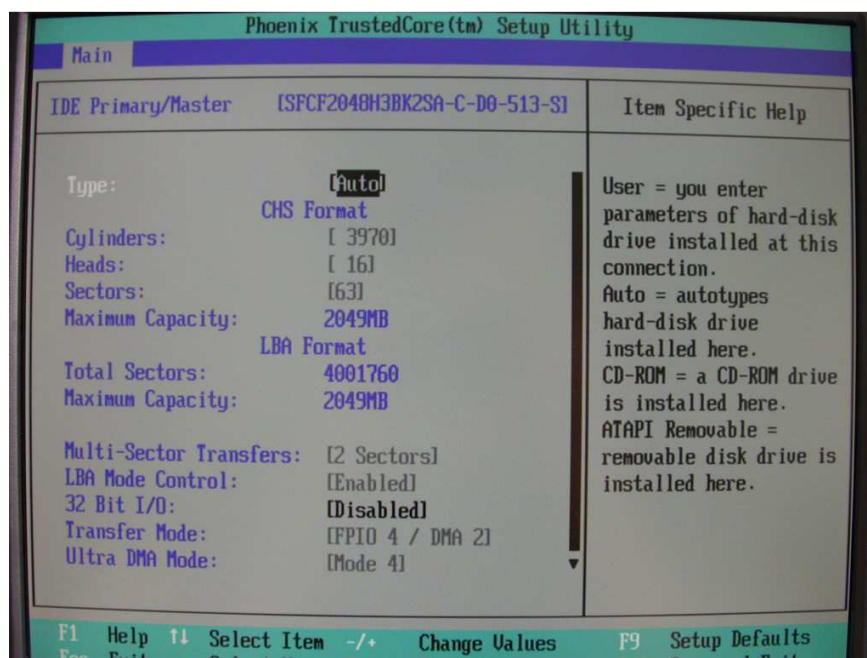
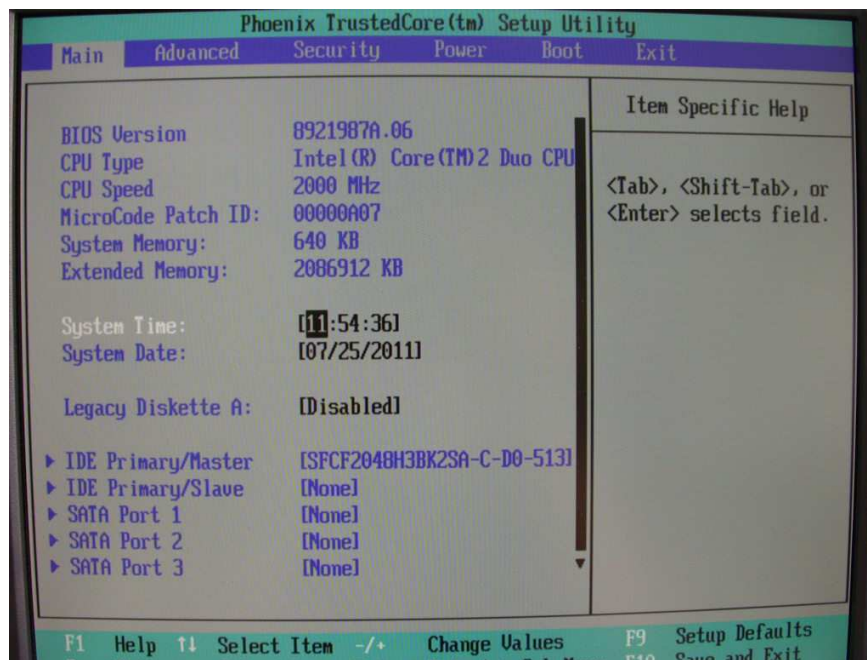
Access the BIOS

On all IPC systems, the BIOS can be accessed by pressing F2 during the Power-On-Self-Test on a connected keyboard.

BIOS Settings for IPC C6 Perform

Note: The settings were recorded from a Core2Duo system, XX.C6-A?1-D???, for systems based on a Celeron CPU (XX.C6.A?1-C???) the settings will slightly differ!

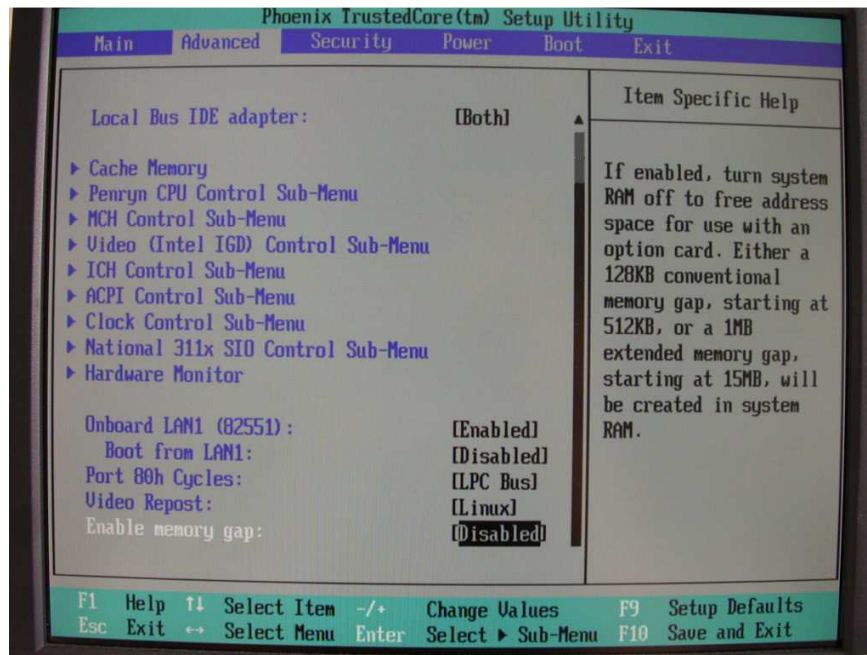
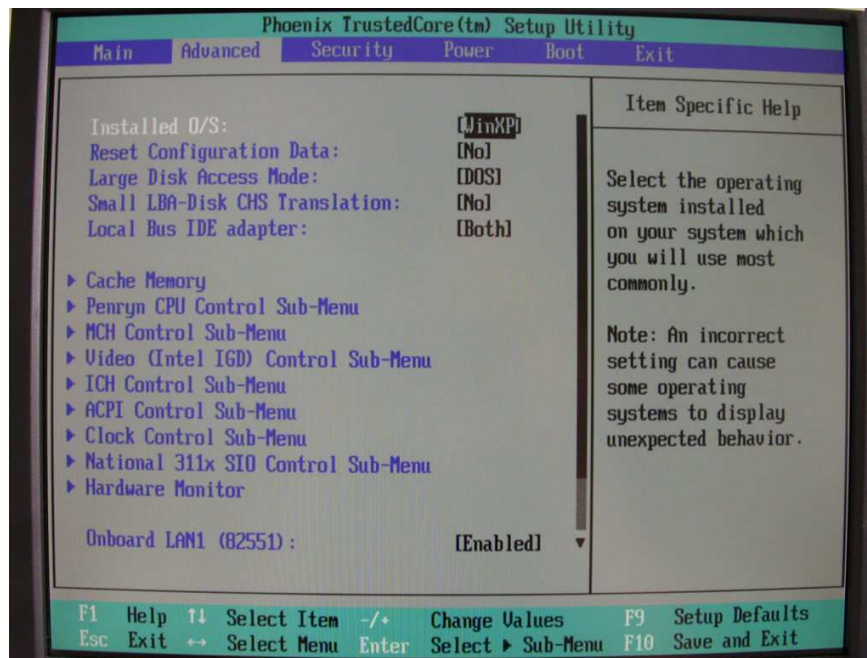
Area 'Main'

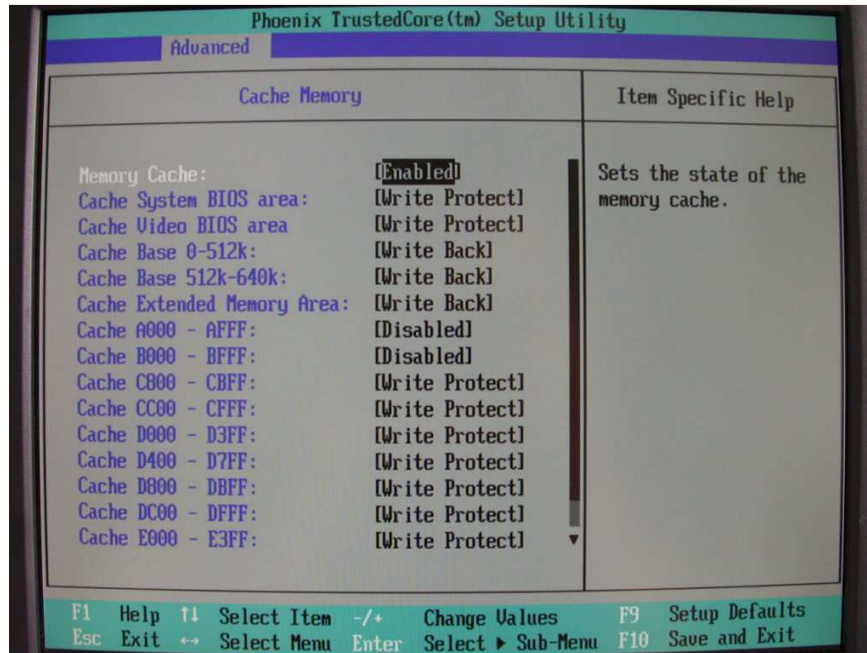


FAQ C6 IPC

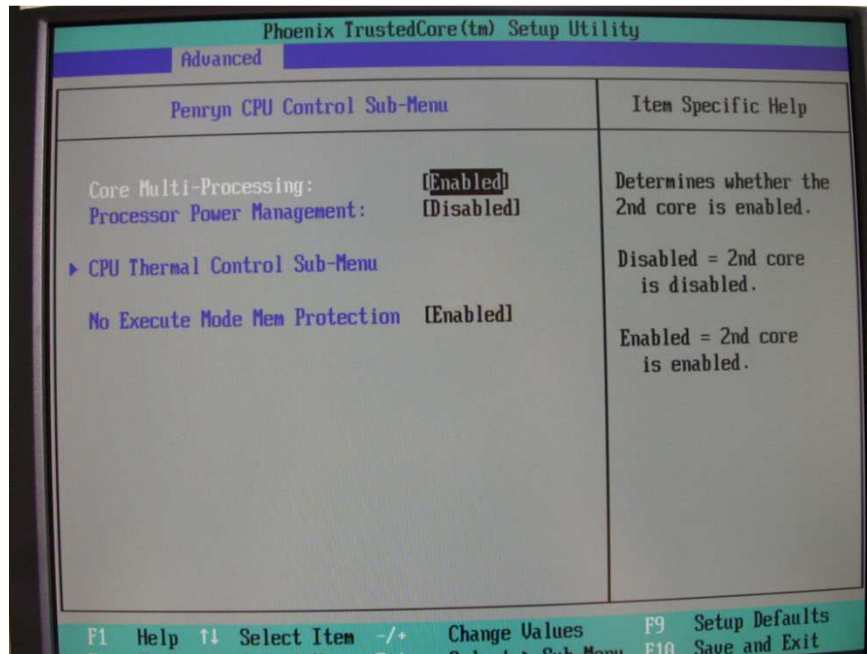


Area 'Advanced'

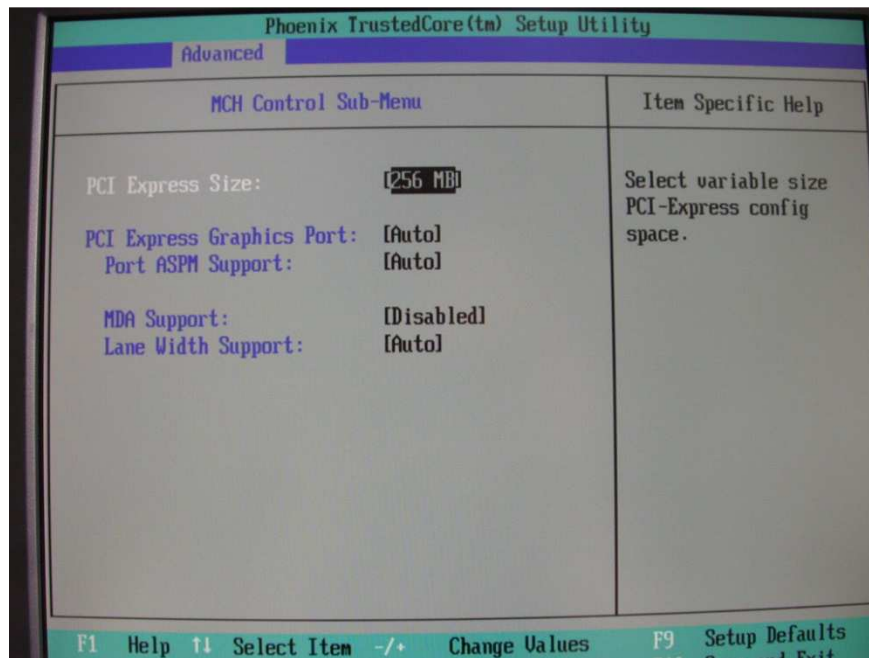
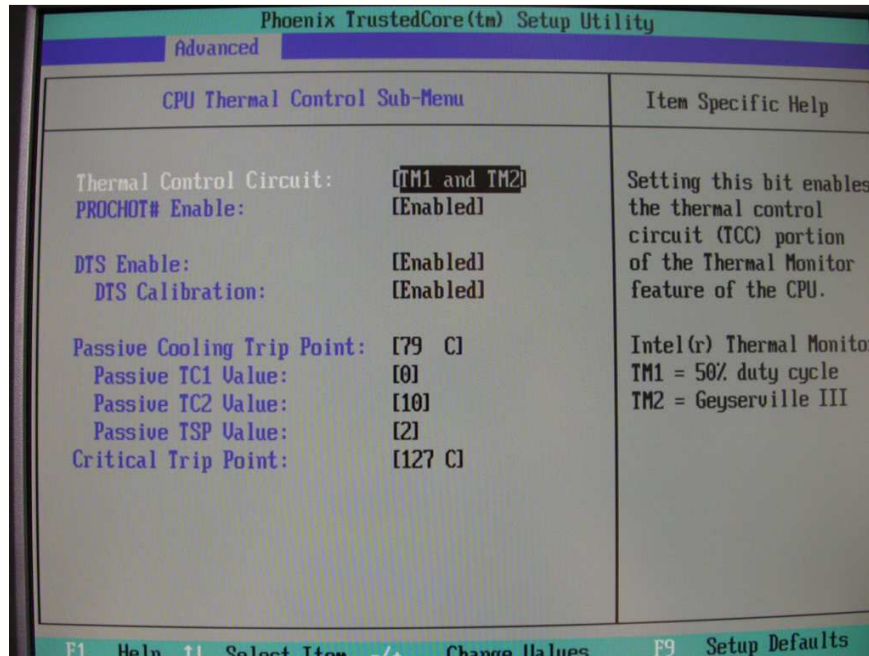




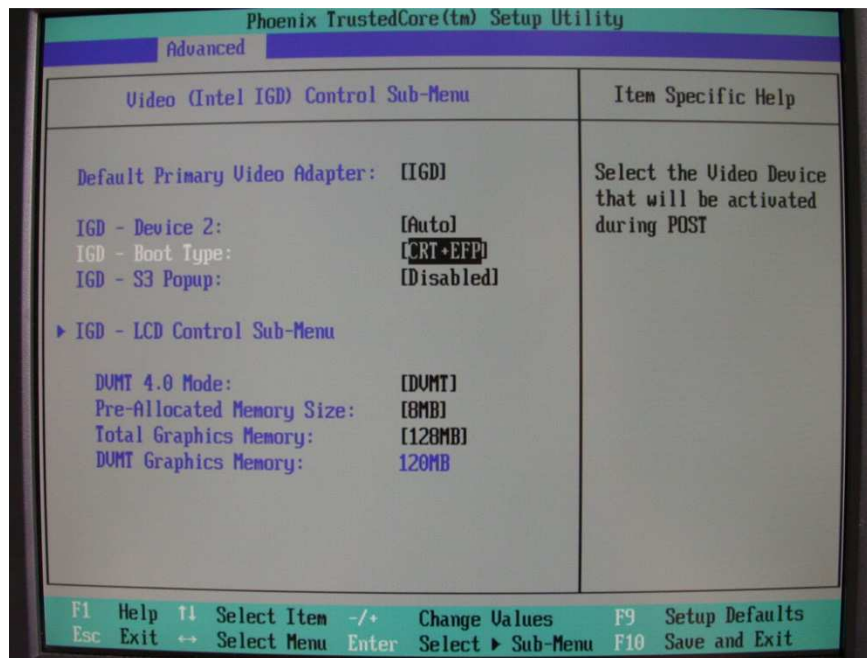
CPU Control



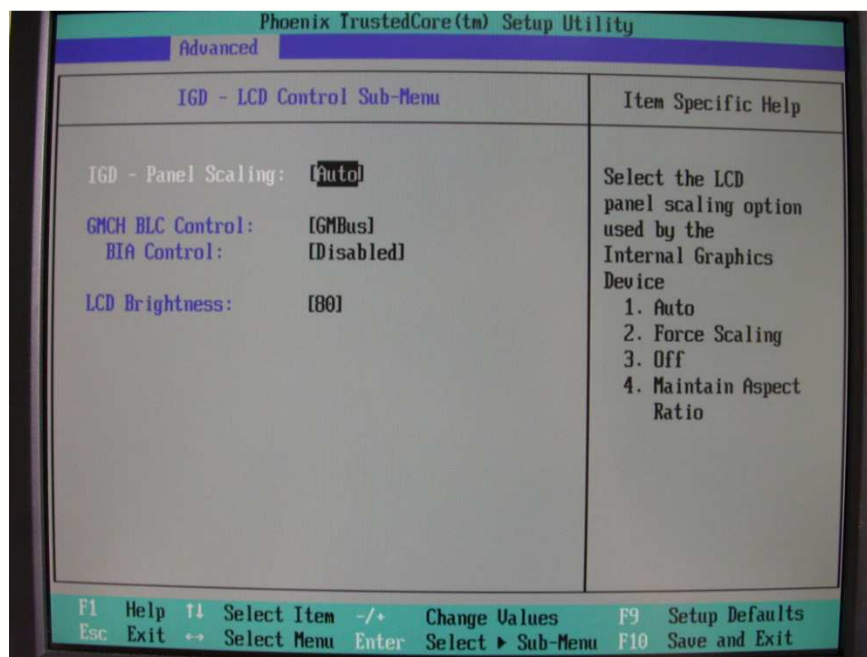
It is essential, that the CPU's power management remains disabled. The second CPU core may remain enabled, however.

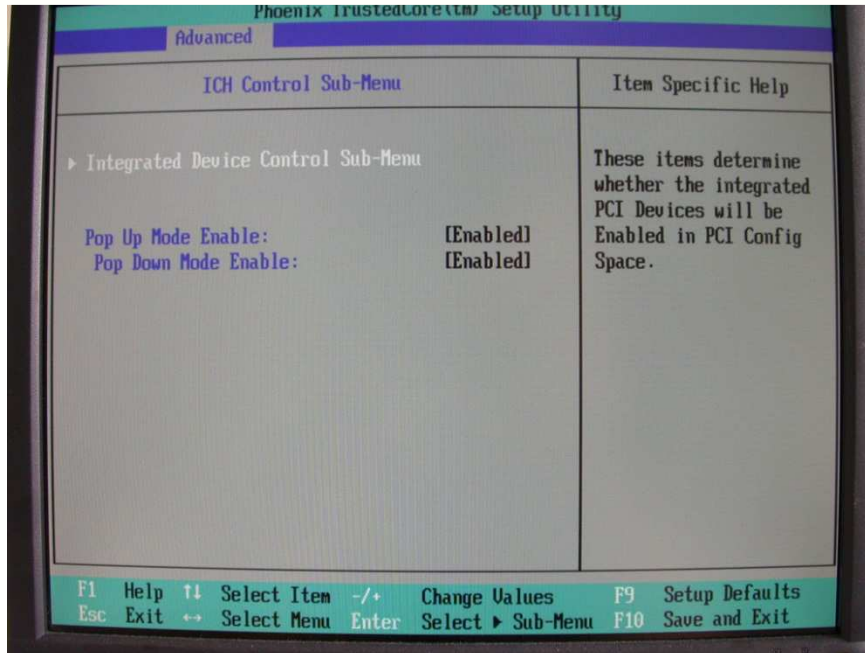


Video settings

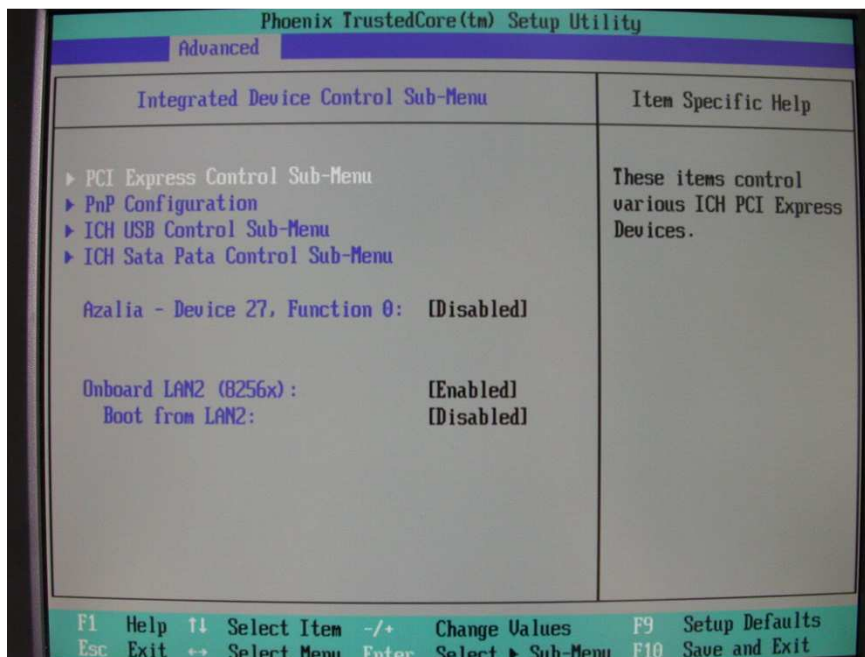


For the use of the three different display types, choose the correct combination here. The VGA output is referred to as 'CRT', the DVI output is referred to as 'EFP' and the optional, build-in touchpanel is referred to as 'LFP'. Choose a combination of up to two active hardware outputs.

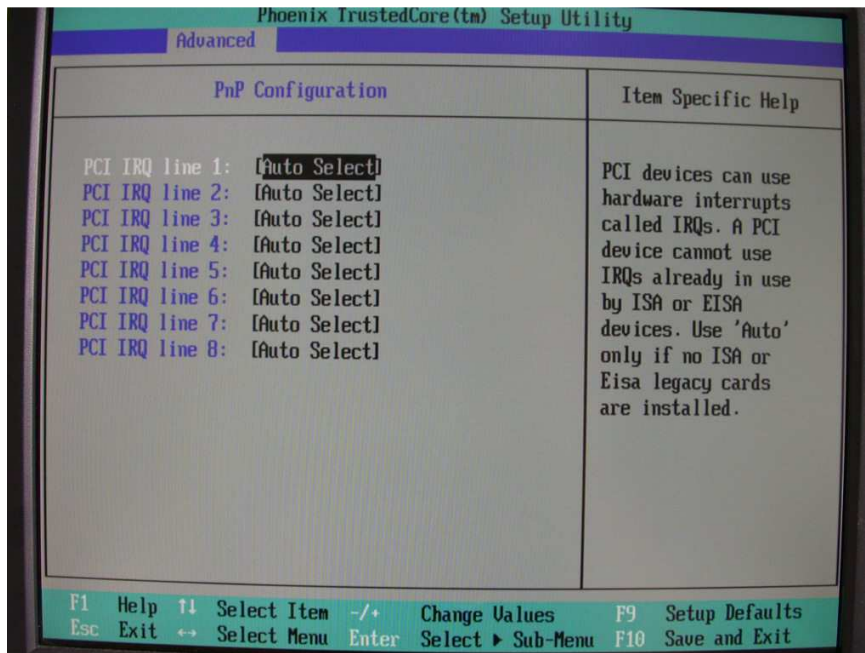
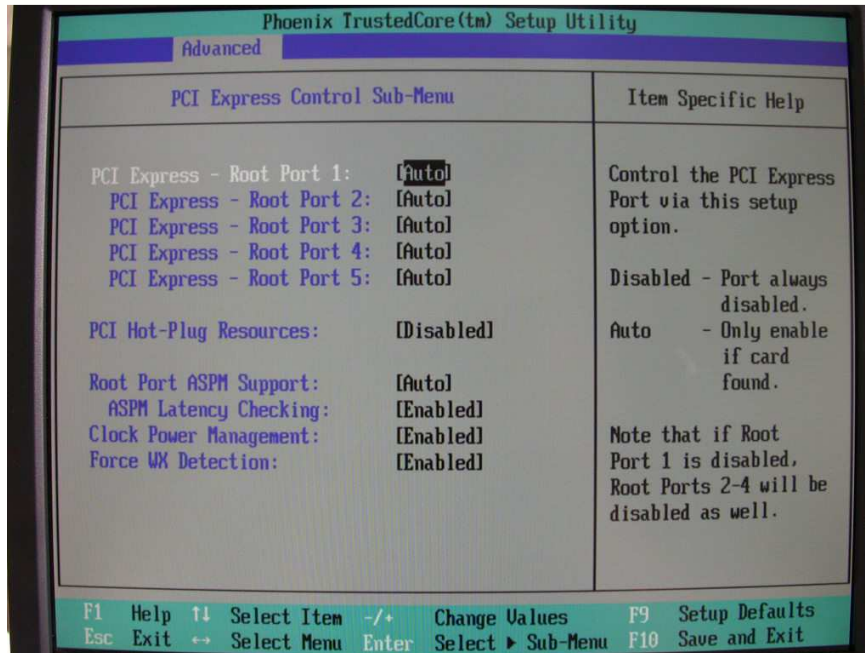




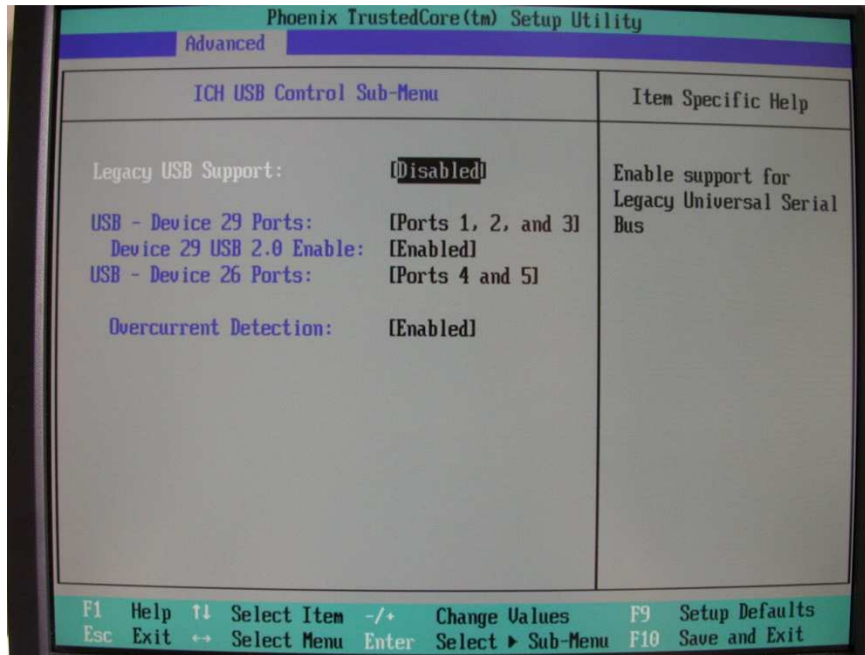
Integrated devices



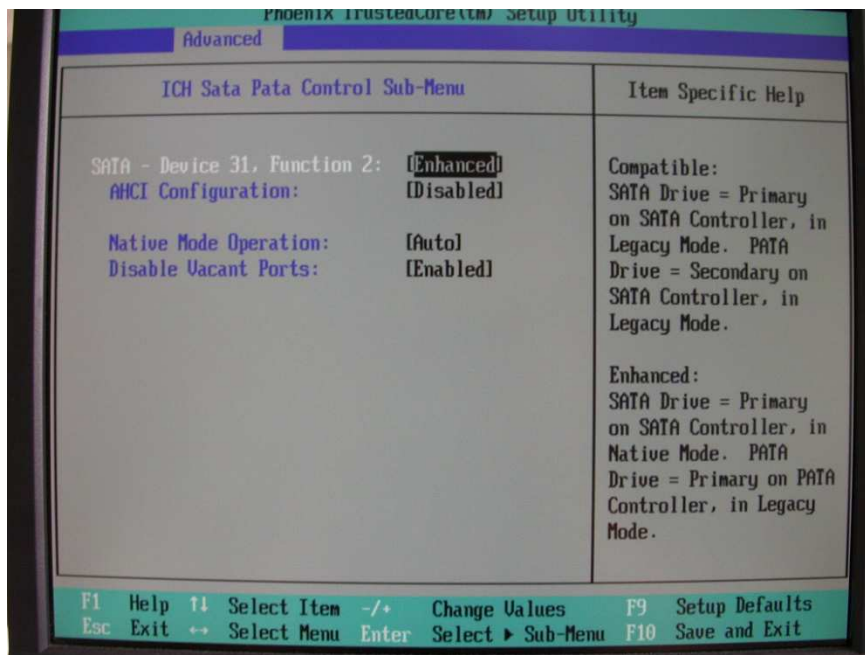
Here, all additional devices are configured. LAN 2, which is the default Ethernet port of the system, is activated here.



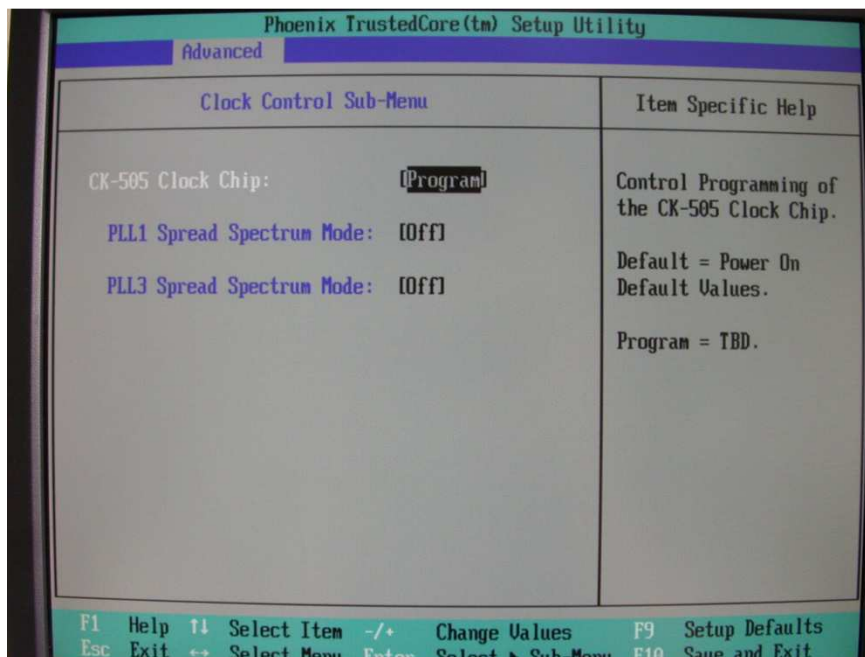
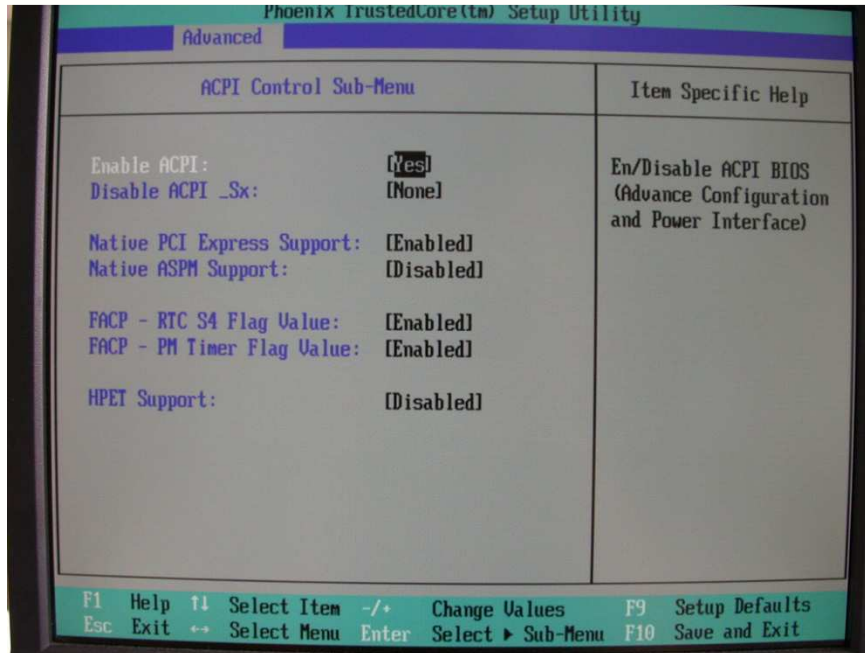
USB support



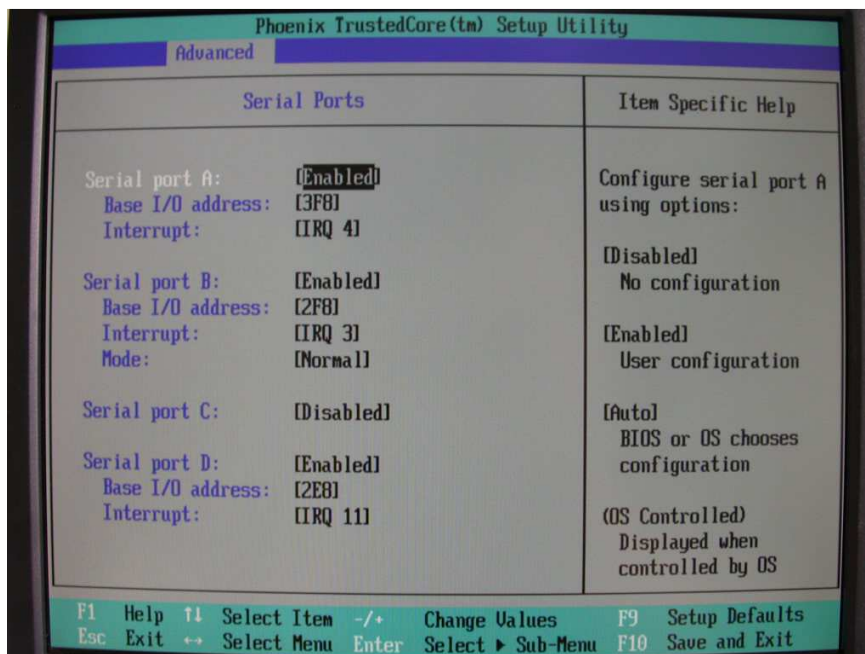
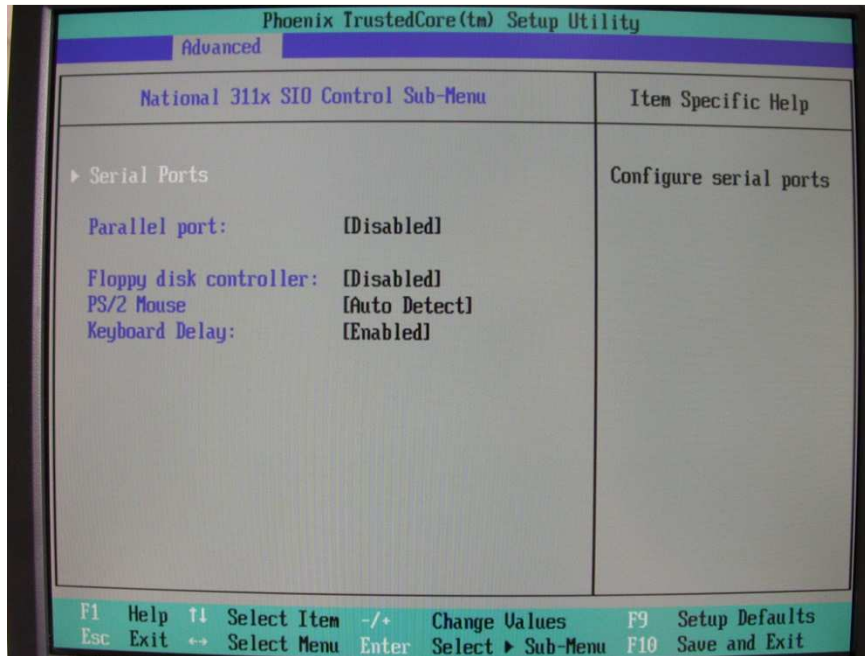
The internal USB root hub is configured here. Legacy USB support is recommended to remain disabled, but the feature has to be enabled whenever the system is supposed to boot from a USB key.

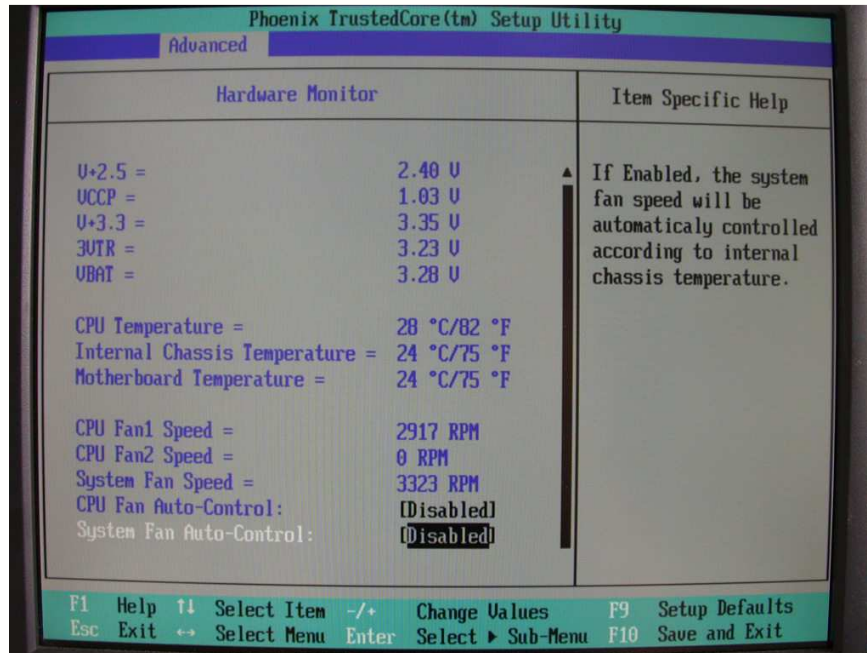


FAQ C6 IPC



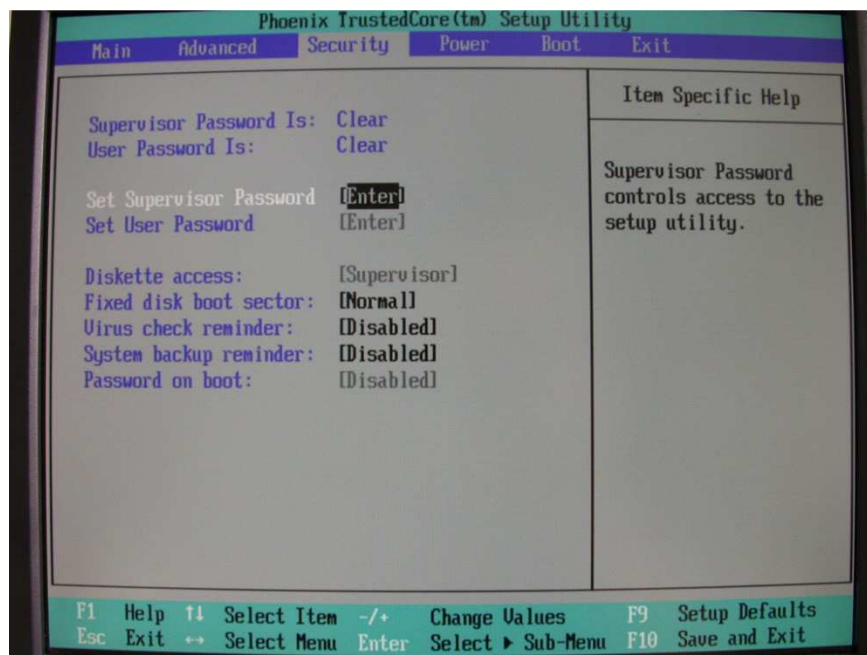
FAQ C6 IPC

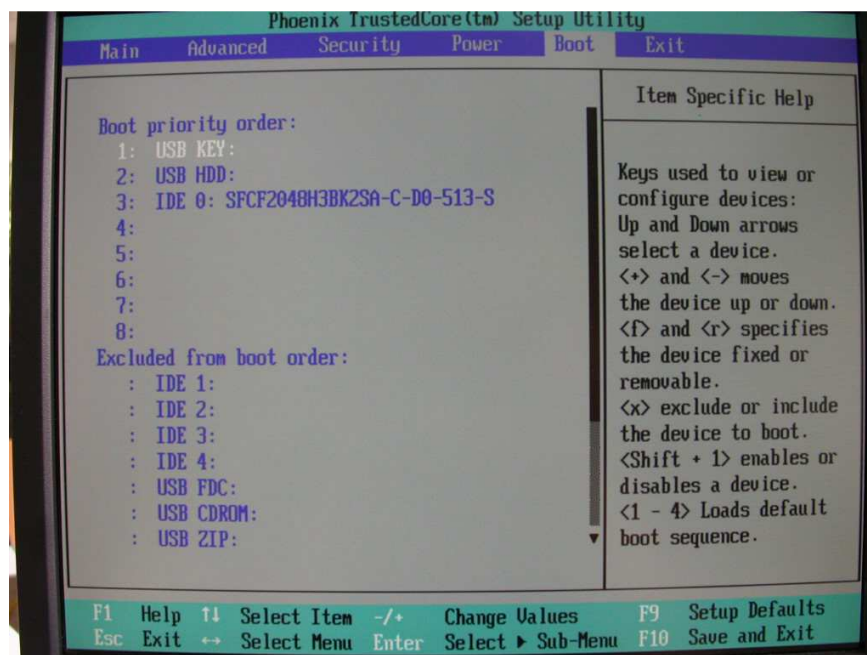
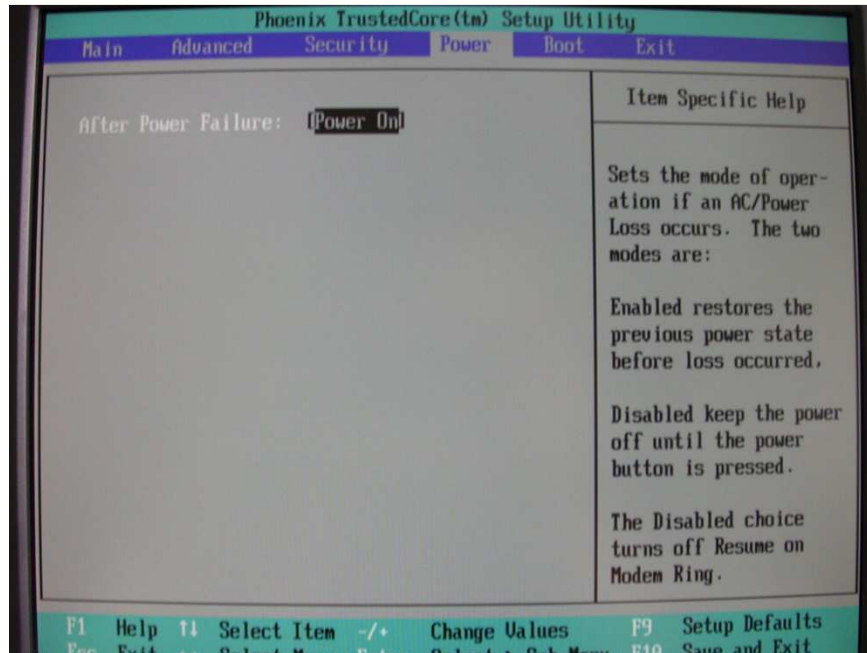




The automatic fan regulation may be enabled here. If this is done, the user may configure temperature limits of the regulation, e.g. a limit below which fans operate at 33% of their speeds and a band in which the fan speed linearly increases up to the maximum.

Additional Areas

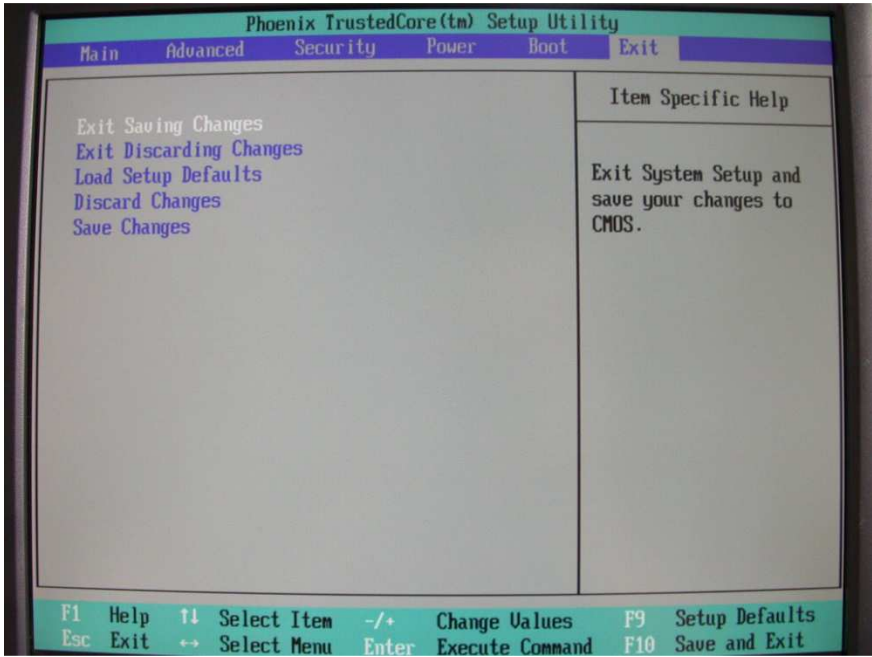




FAQ C6 IPC



Area 'Exit'



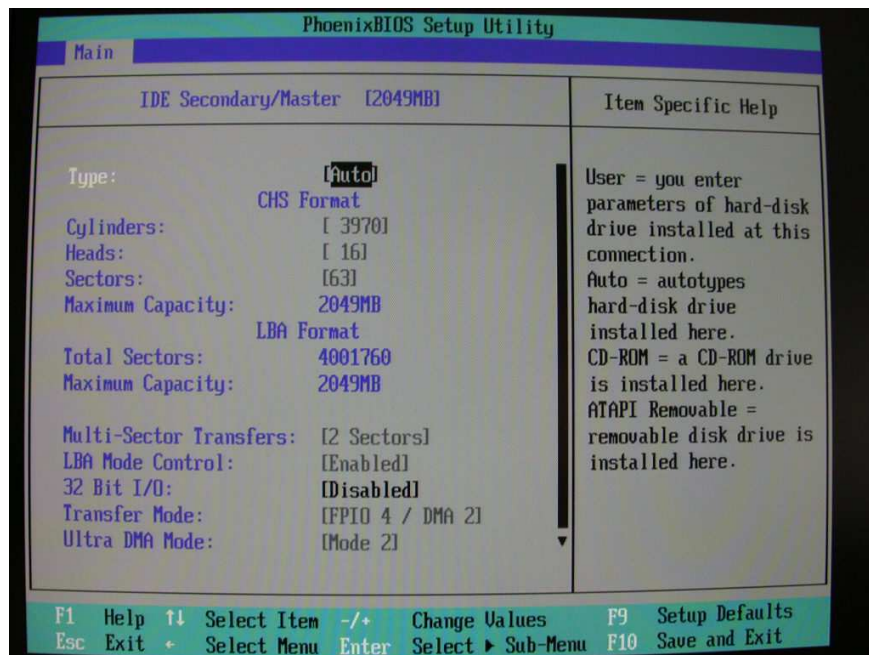
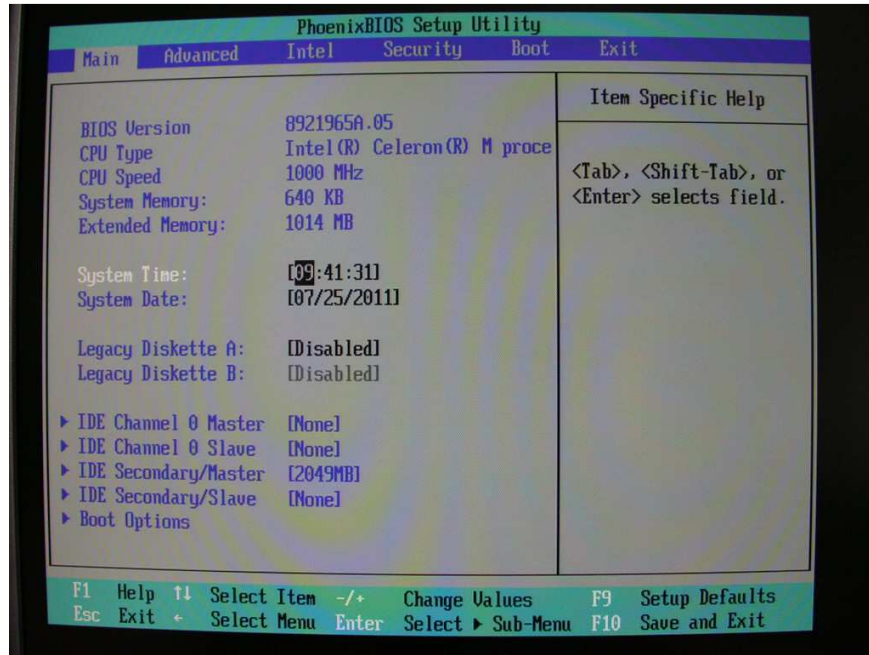
After any changes made in the BIOS, remember to quit the exit dialog using 'Exit saving changes'. In contrast, if you are not sure, what you have changed or what the changes may affect, be sure to select 'Exit discarding changes'!

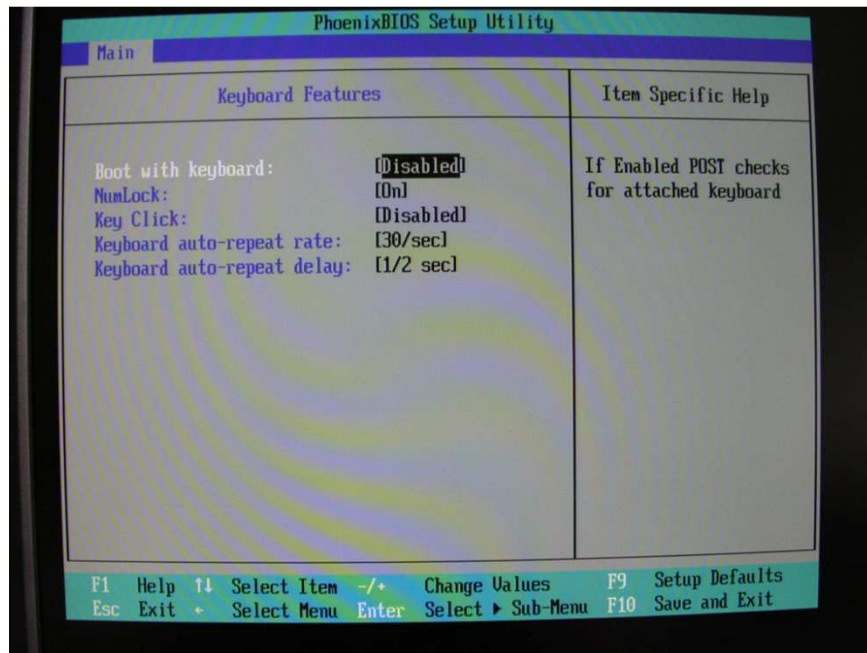
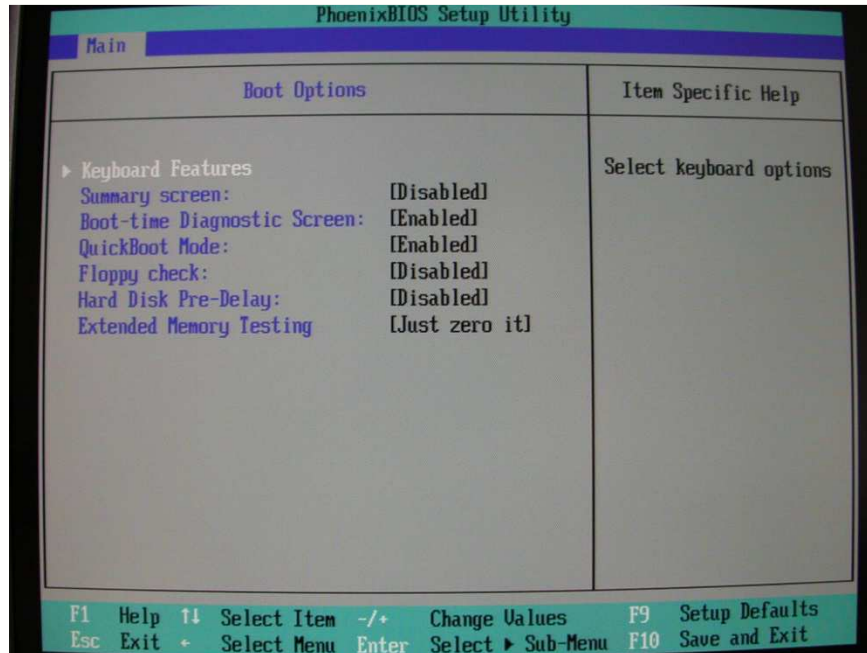
FAQ C6 IPC



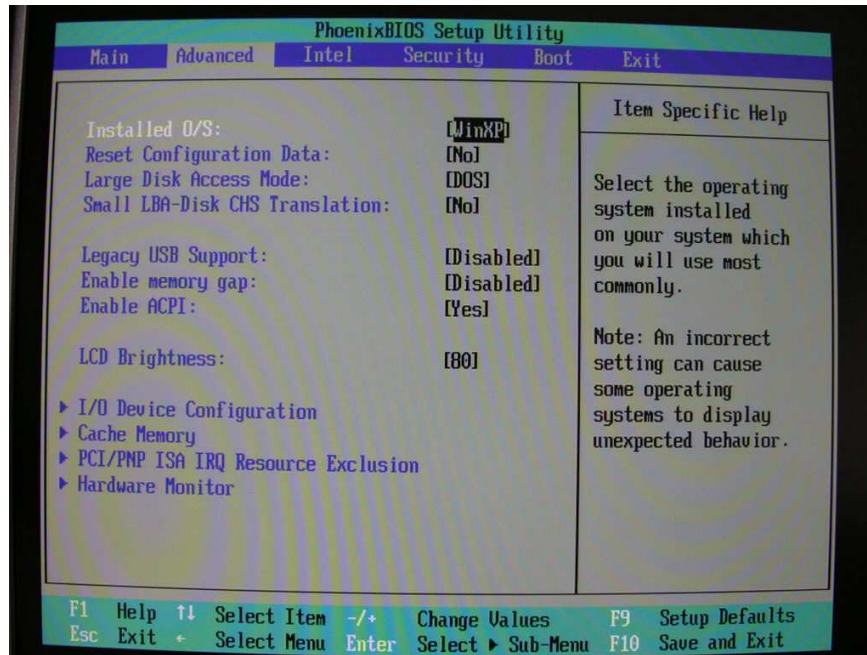
BIOS settings for IPC C6 Econ

Area 'Main'

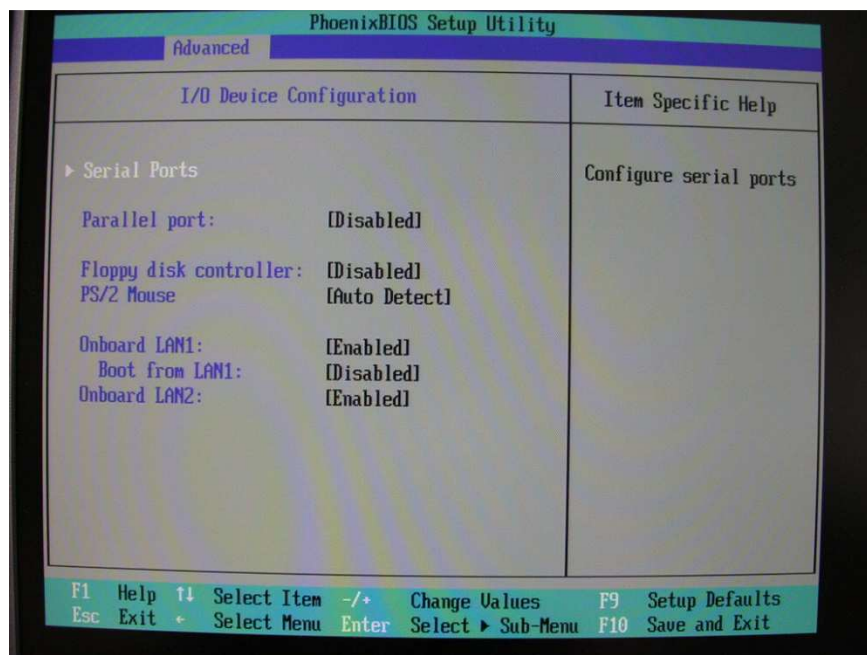




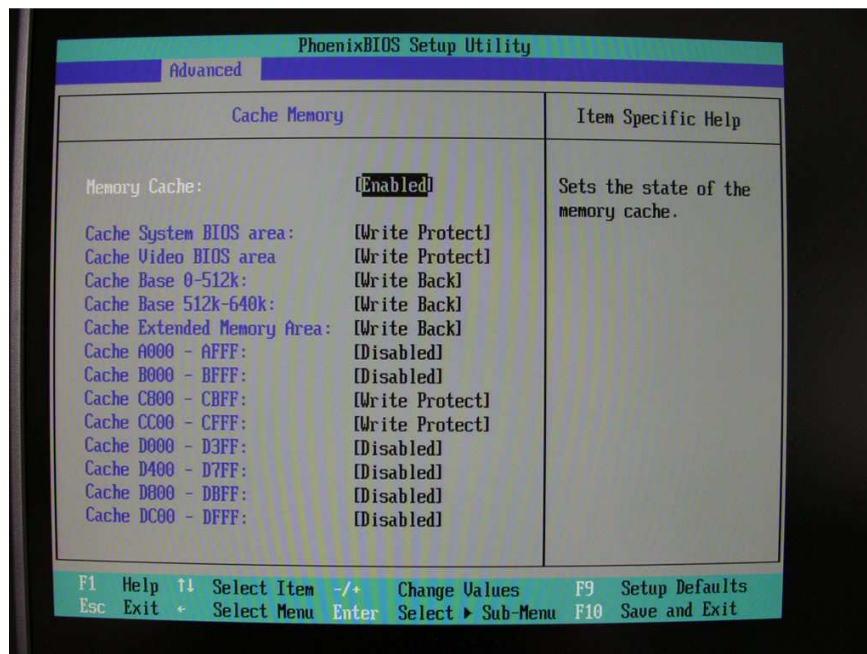
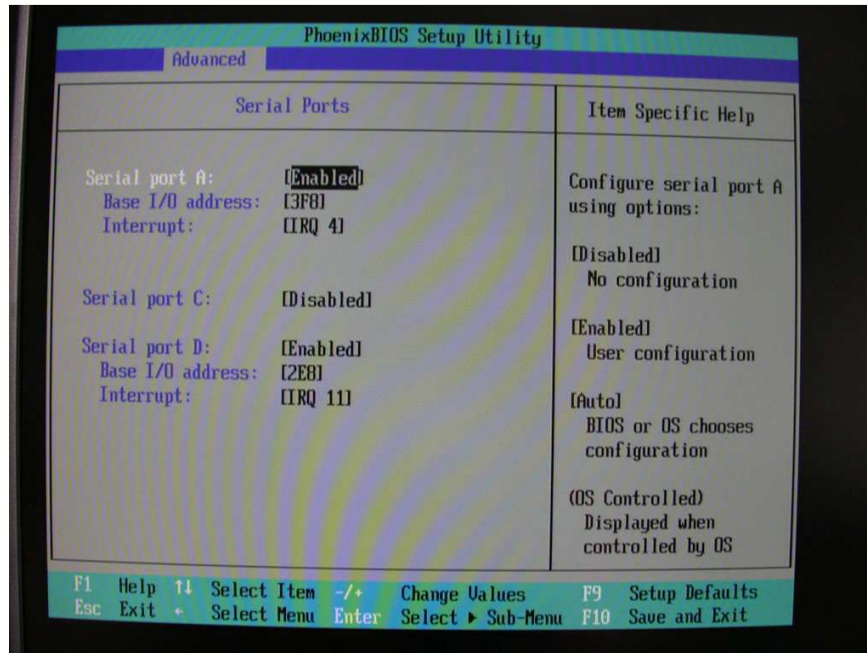
Area 'Advanced'



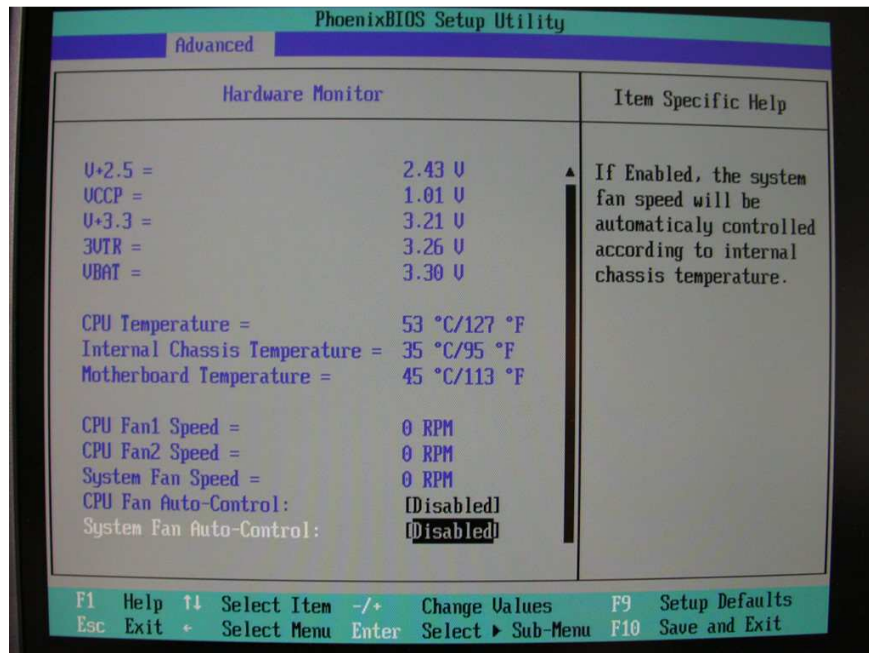
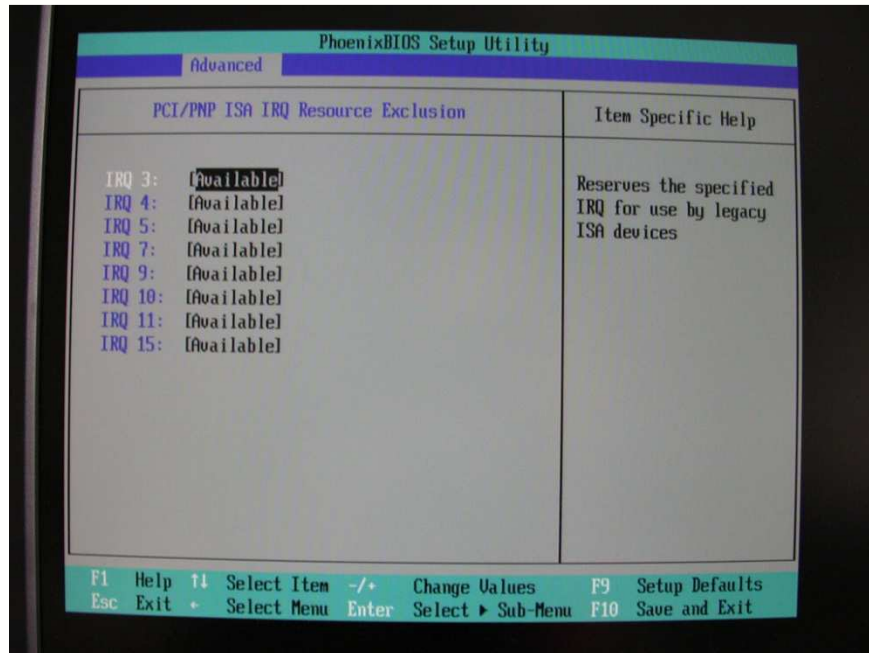
Legacy USB support is recommended to remain disabled, but the feature has to be enabled whenever the system is supposed to boot from a USB key.



FAQ C6 IPC

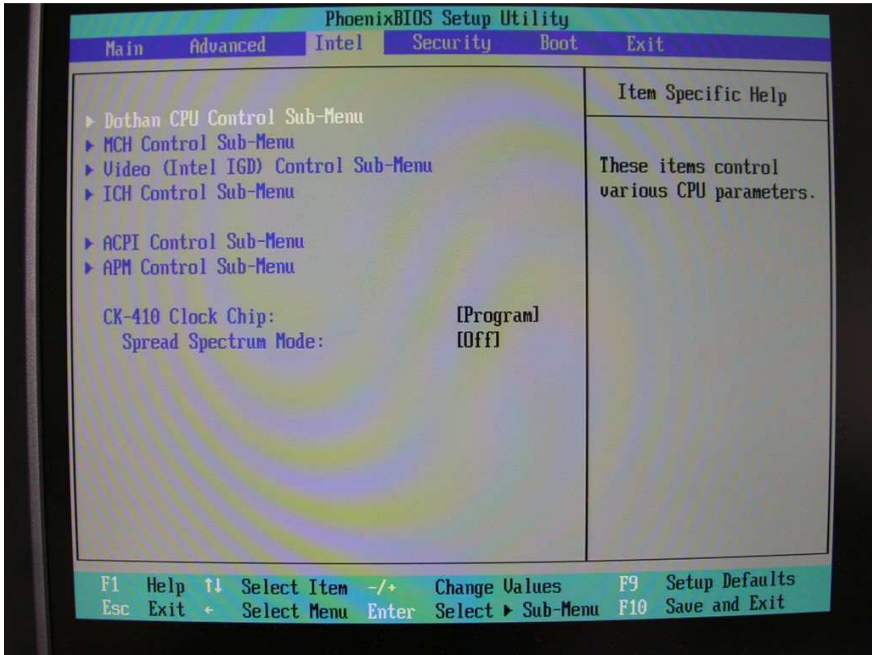


FAQ C6 IPC

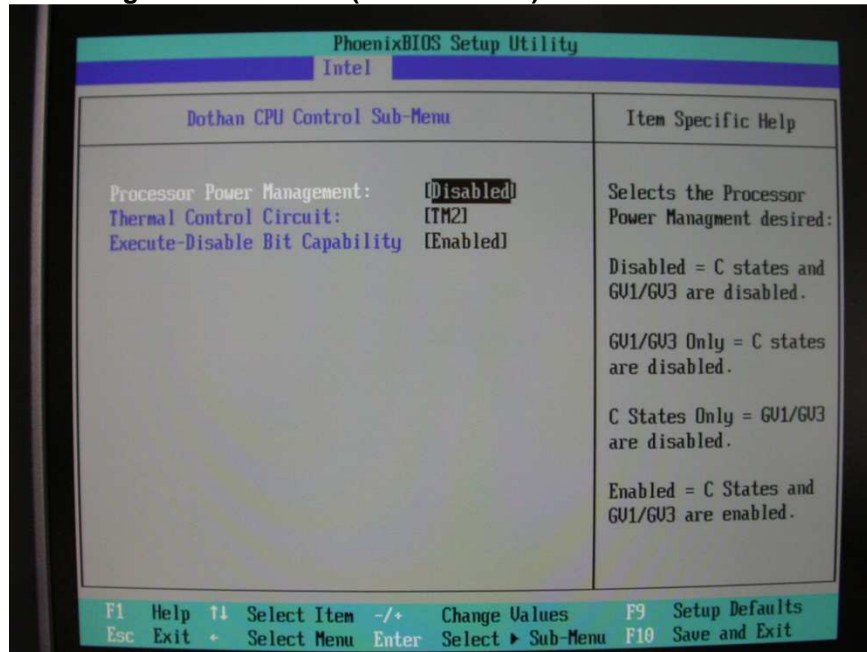


As the C6 Econ system is generally fanless, changing these setting will not have any effect at all.

Dothan CPU Control Sub-Menu

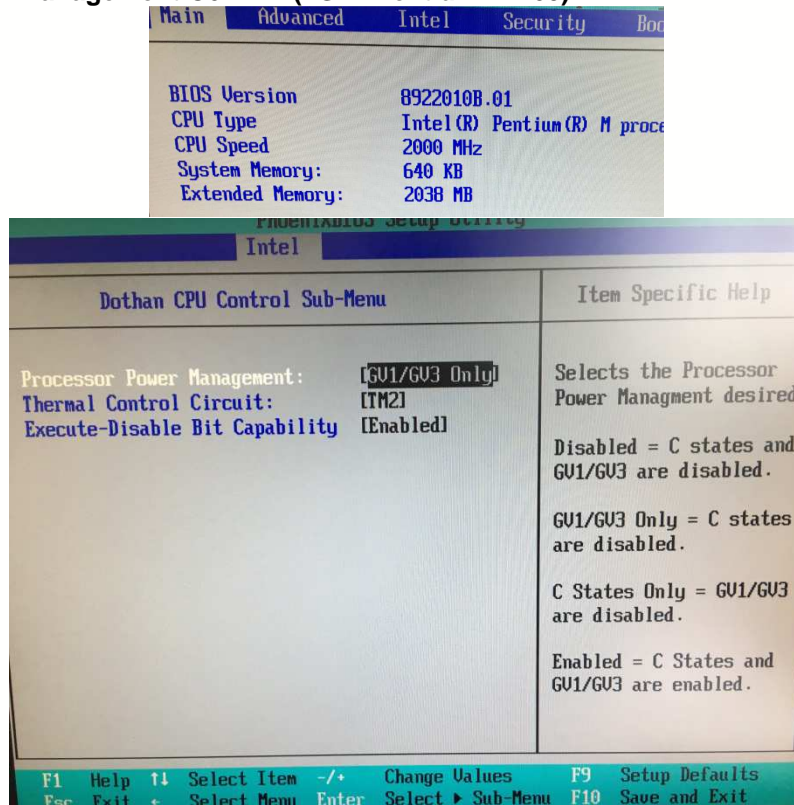


Processor Power Management C6 ECON (1Ghz Celeron)



It is essential, that the CPU's power management remains disabled.

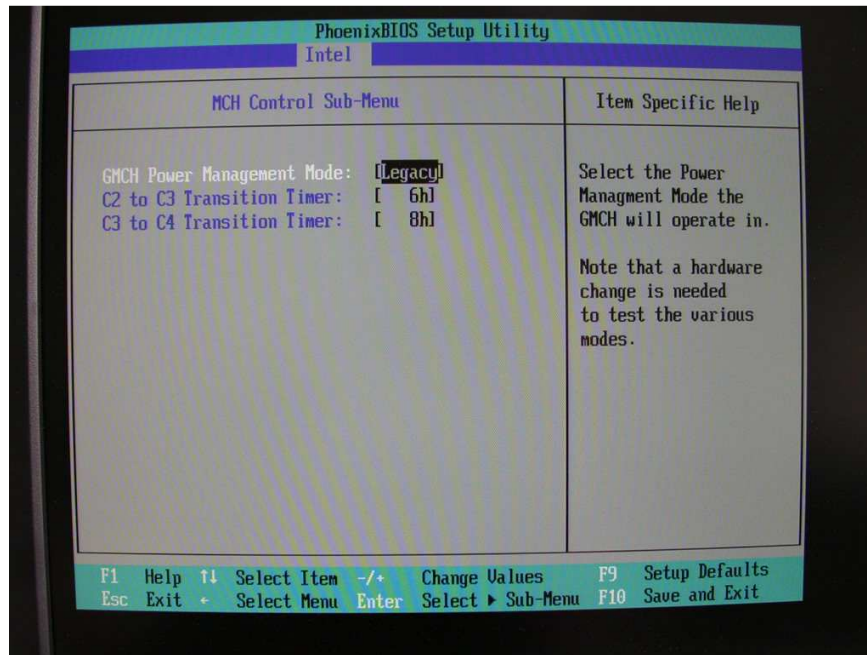
Processor Power Management C6 BM2 (2Ghz Pentium M 760)



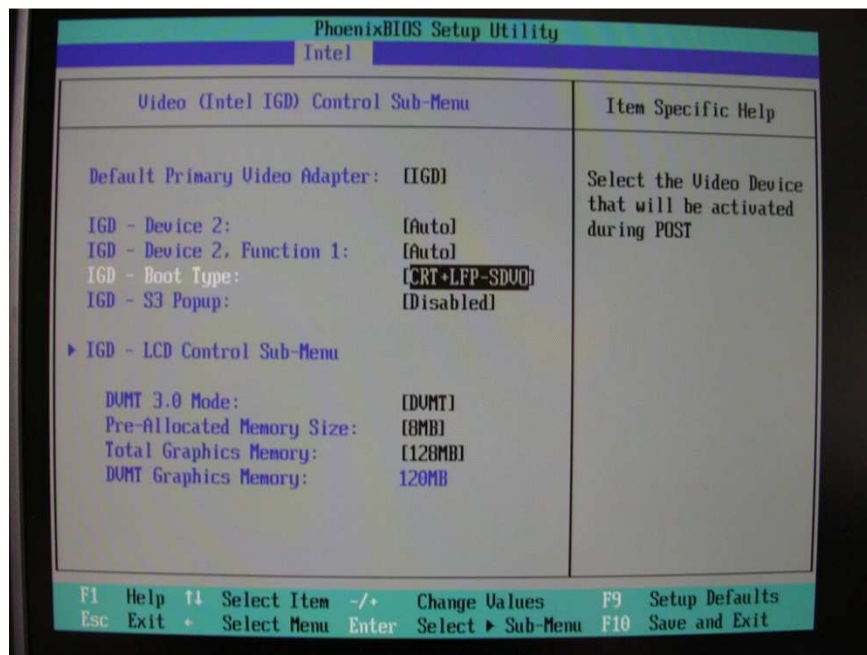
FAQ C6 IPC



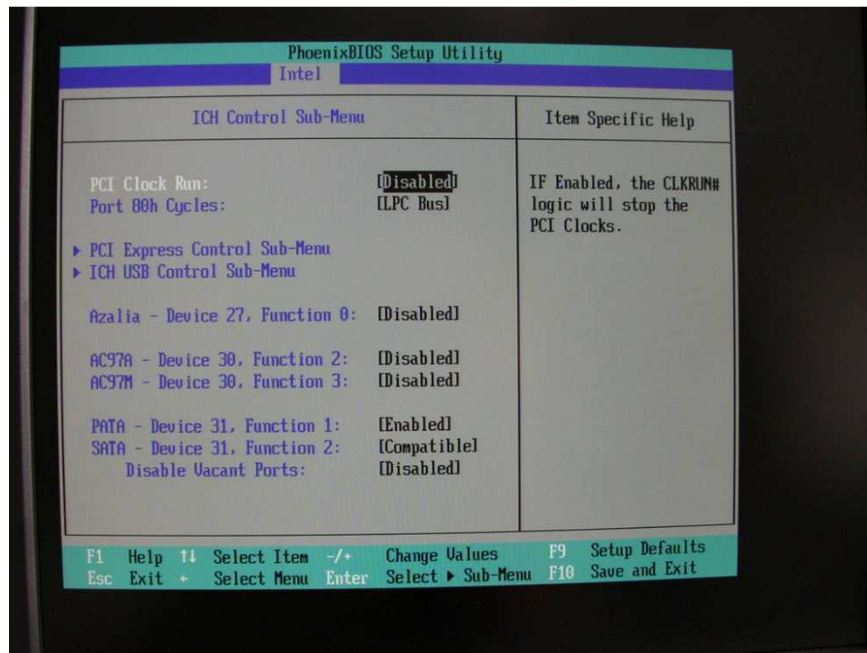
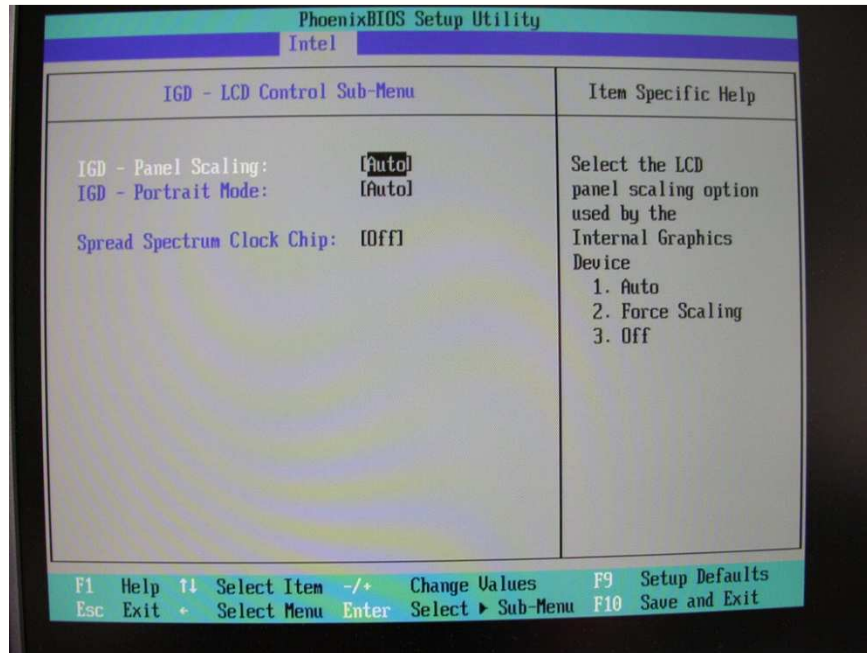
It is essential, that the CPU's power management is set to "GV1/GV3 Only"
For the device C6 BM2 (2Ghz Pentium M 760).



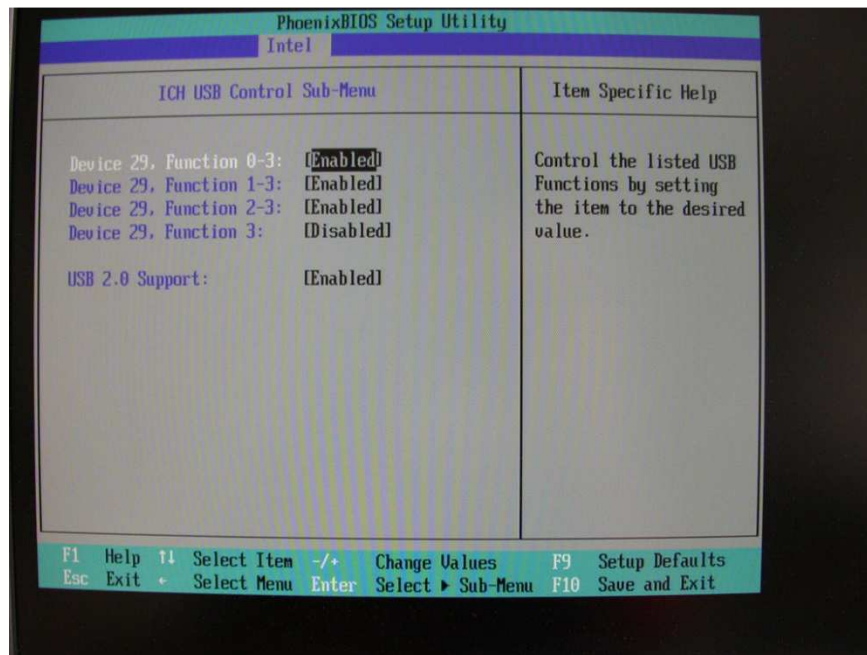
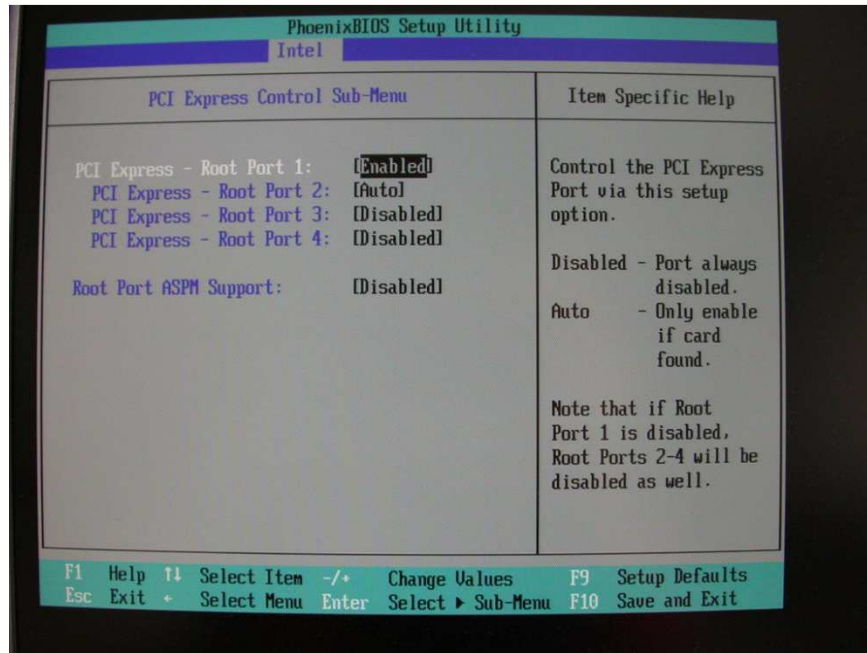
Video settings



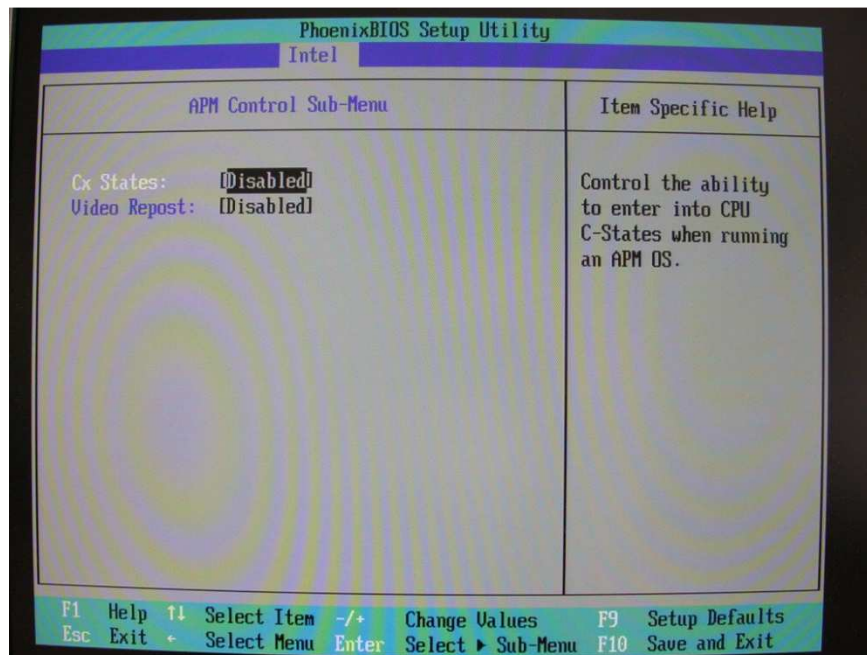
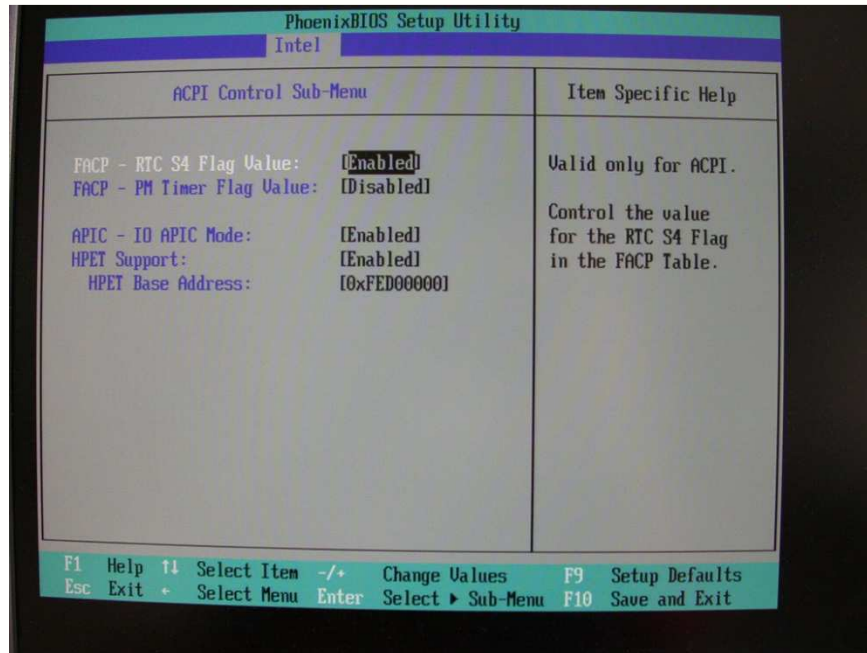
The only valid combination for a C6 ECON is here 'CRT + LFP-SDVO':
The VGA output is referred to as 'CRT', and the optional, build-in touchpanel is referred to as 'LFP'



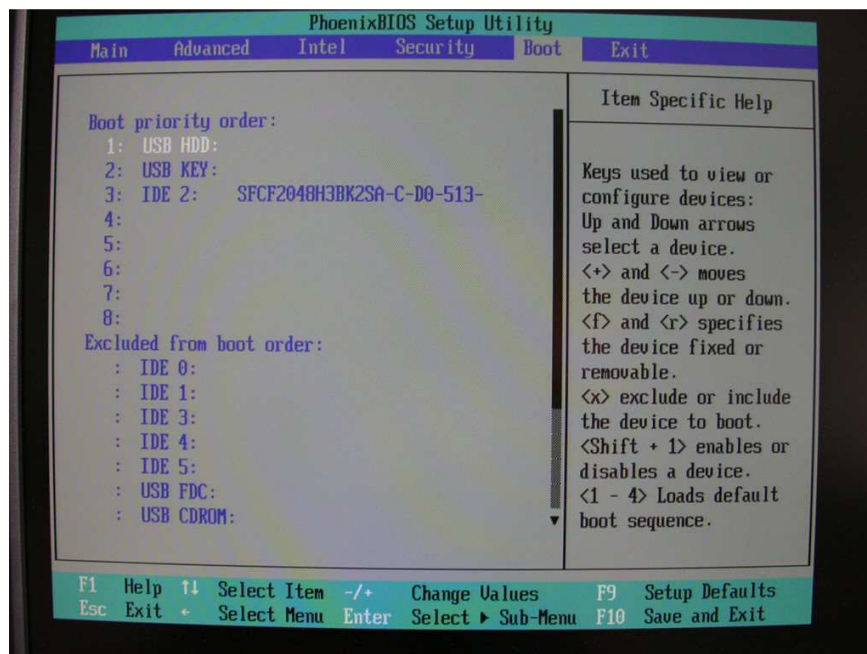
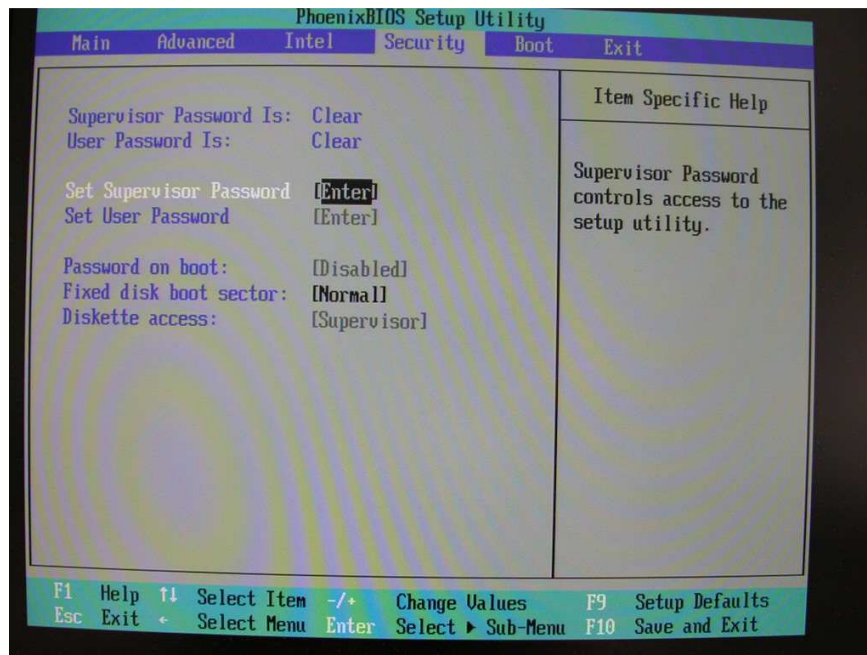
FAQ C6 IPC



FAQ C6 IPC



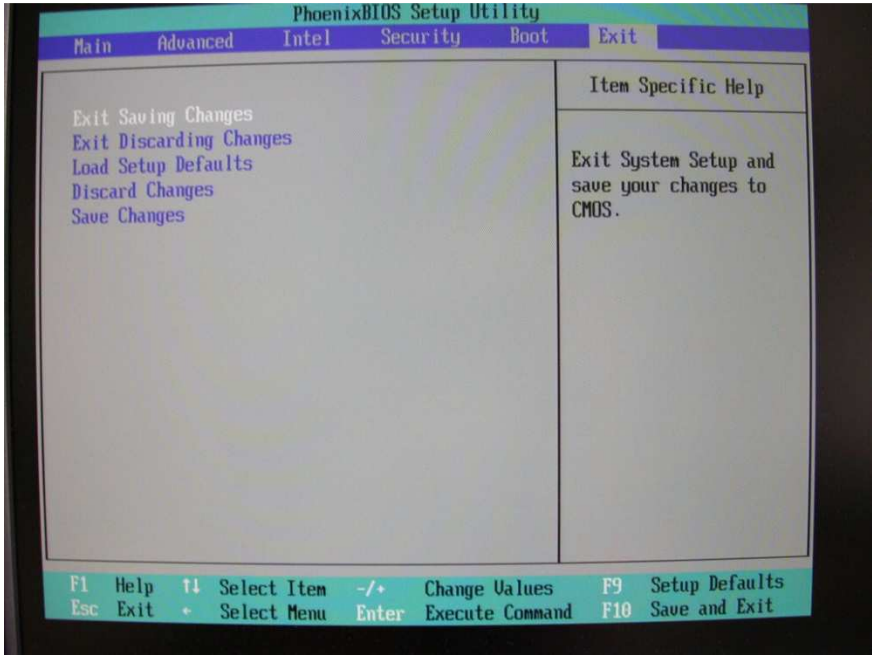
Additional areas



FAQ C6 IPC



Area 'Exit'



After any changes made in the BIOS, remember to quit the exit dialog using 'Exit saving changes'. In contrast, if you are not sure, what you have changed or what the changes may affect, be sure to select 'Exit discarding changes'!

Disclaimer

KEB Automation KG reserves the right to change/adapt specifications and technical data without prior notification. The safety and warning reference specified in this manual is not exhaustive. Although the manual and the information contained in it is made with care, KEB does not accept responsibility for misprint or other errors or resulting damages. The marks and product names are trademarks or registered trademarks of the respective title owners.

The information contained in the technical documentation, as well as any user-specific advice in verbal or in written form are made to the best of our knowledge and information about the application. However, they are considered for information only without responsibility. This also applies to any violation of industrial property rights of a third-party.

Inspection of our units in view of their suitability for the intended use must be done generally by the user. Inspections are particular necessary, if changes are executed, which serve for the further development or adaption of our products to the applications (hardware, software or download lists). Inspections must be repeated completely, even if only parts of hardware, software or download lists are modified.

Application and use of our units in the target products is outside of our control and therefore lies exclusively in the area of responsibility of the user.

KEB Automation KG
Südstraße 38 • D-32683 Barntrup
fon: +49 5263 401-0 • fax: +49 5263 401-116
net: www.keb.de • mail: info@keb.de