



Setup C6 ECON/PERFORM

FAQ No.0001

Part	Version	Revision	Date	Status
en	3.5.4.10	001	2019-01-01	Released

Content

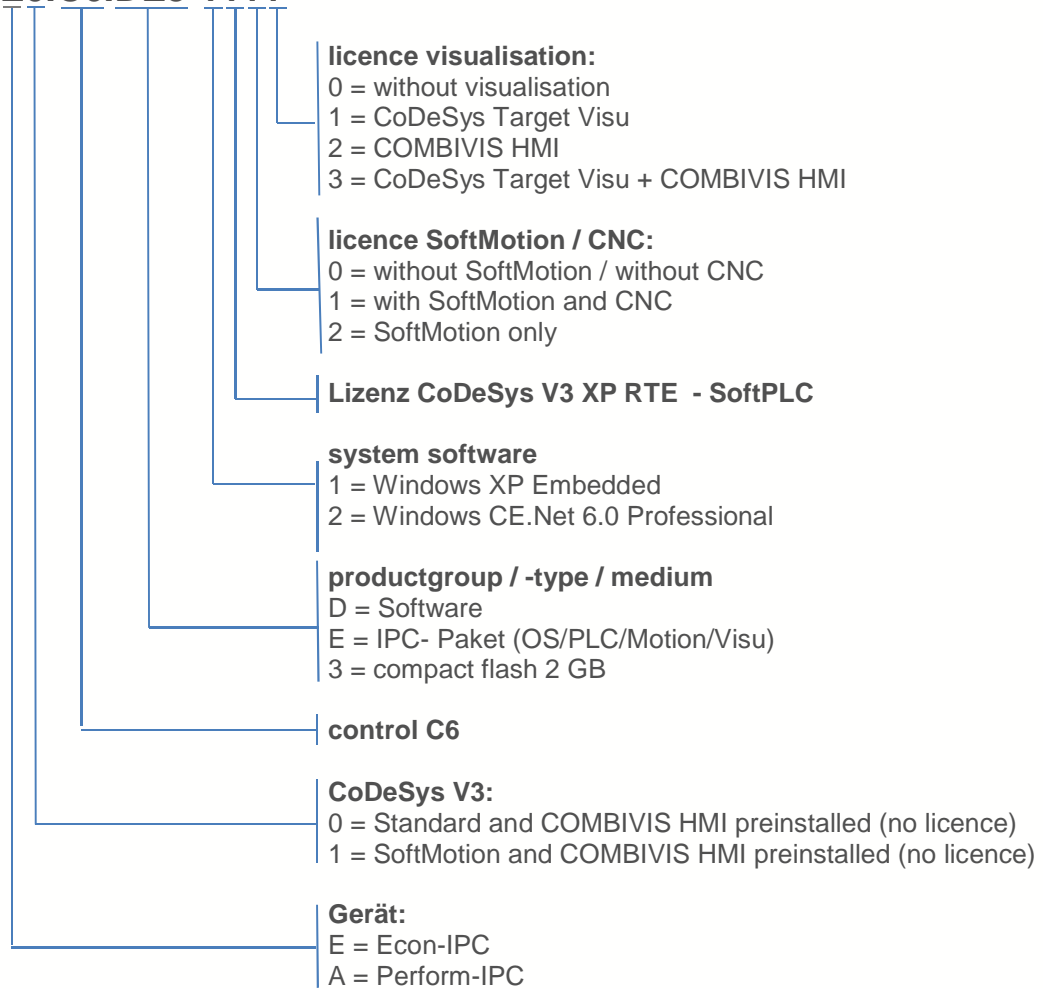
Purpose of this document.....	2
Hard- and Software- Identification.....	2
Software.....	3
LAN-Verbindung	3
Setting-up	3
Request and activate the licenses.....	6
Last Step:.....	6
Disclaimer	7

Purpose of this document

With this short manual a KEB customer should become able to carry out a Setup for the box IPC or Panel IPC.

Hard- and Software- Identification

E0.C6.DE3-1111

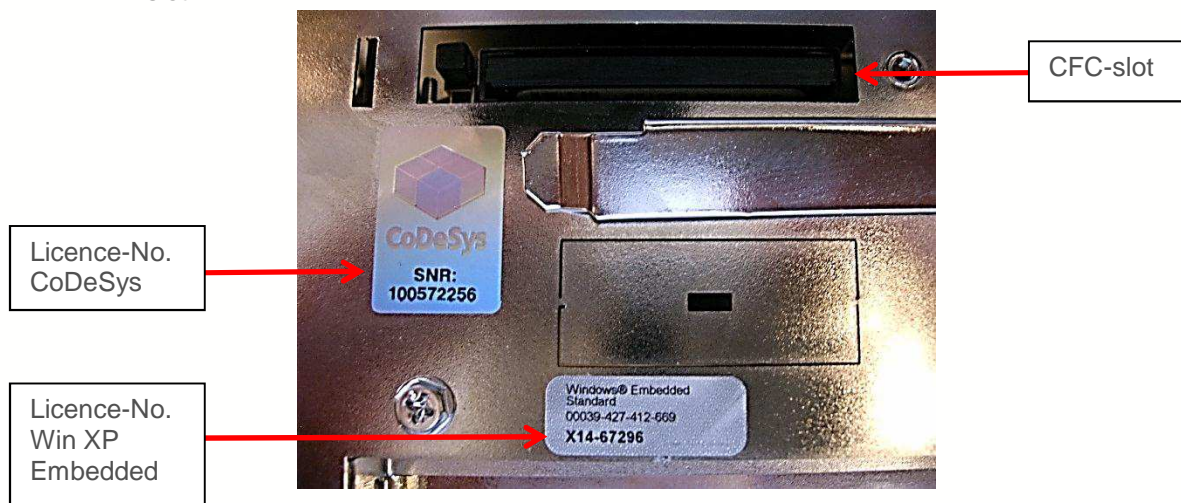


KEB- hard- and software - identifikation

KEB-serial-no.

Software

- a. The software products are supplied with the Compact Flash card (CFC) but still an activation is needed (see also point 6 „Request and activate the licenses“).
- b. Before inserting the CFC the serial number of the CFC must be noted because this number must be specified with the license request.
- c. Also the license numbers (stickers) for CoDeSys and Windows XP Embedded are supplied with the CFC. These must be noticed and affixed on the IPC for example next to the CFC-slot.



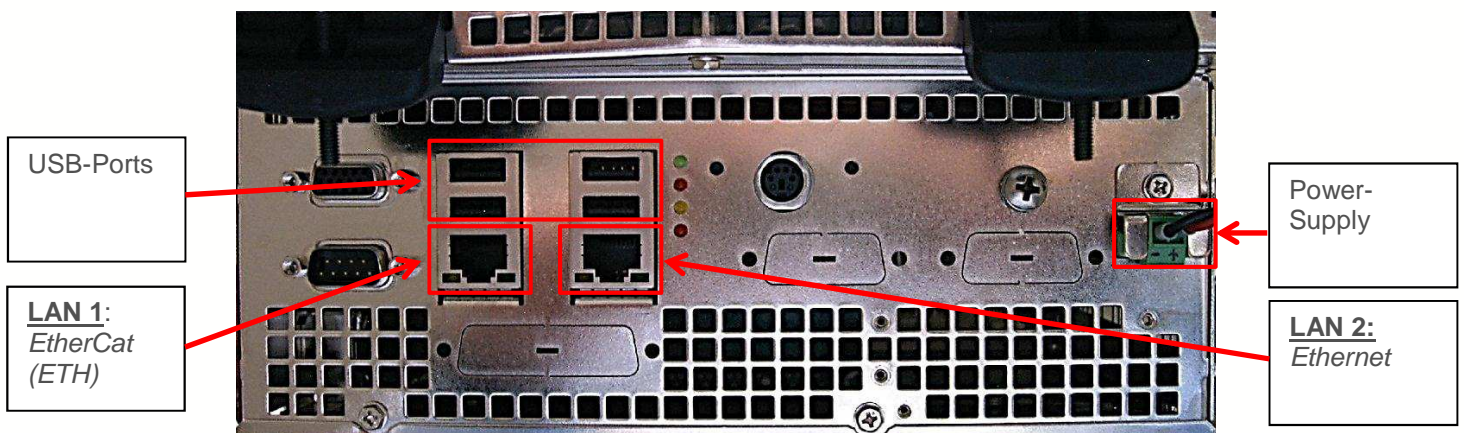
LAN-Verbindung

LAN 1 → EtherCat (ETH) for connection to the fieldbus

- The already given IP address by default of EtherCat must not be changed.

LAN 2 → Ethernet for connection to the general network

- The IP address can be adapted to the local network.



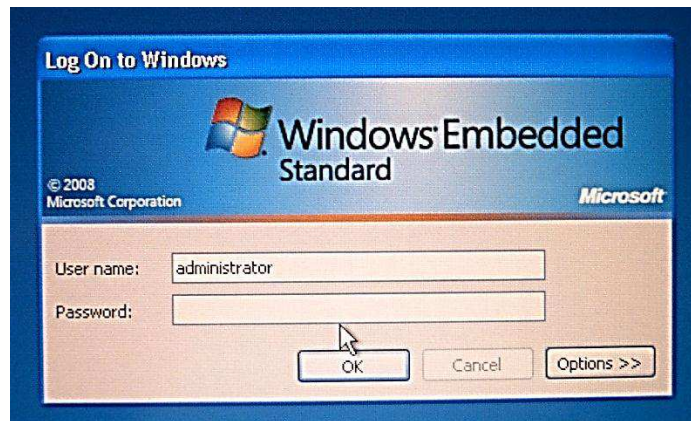
Setting-up

- d. Insert CFC in the card reader slot

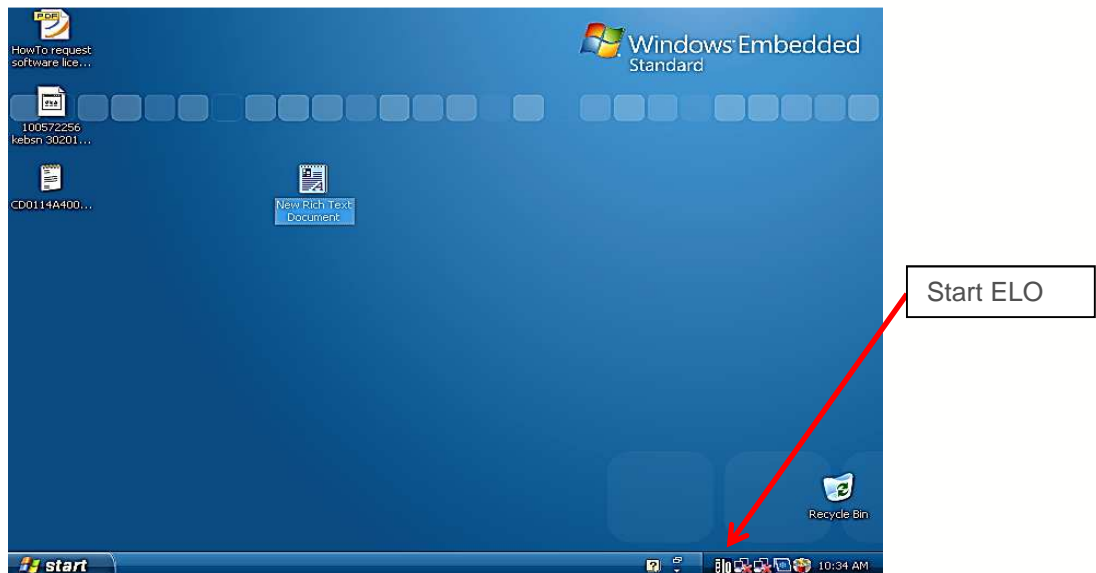
FAQ C6 IPC



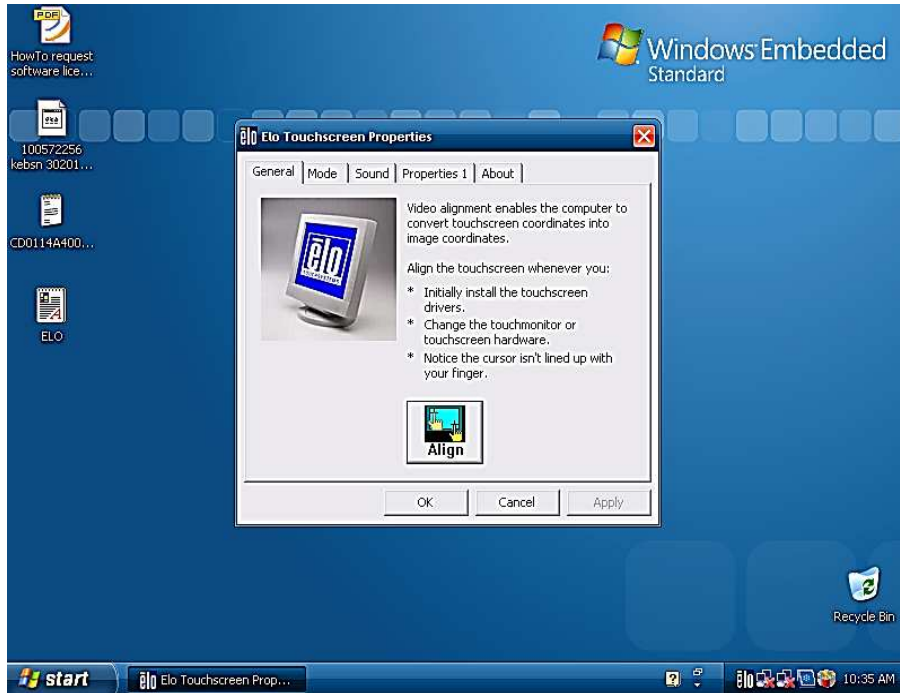
- e. Start IPC
- f. User registration is done without a password



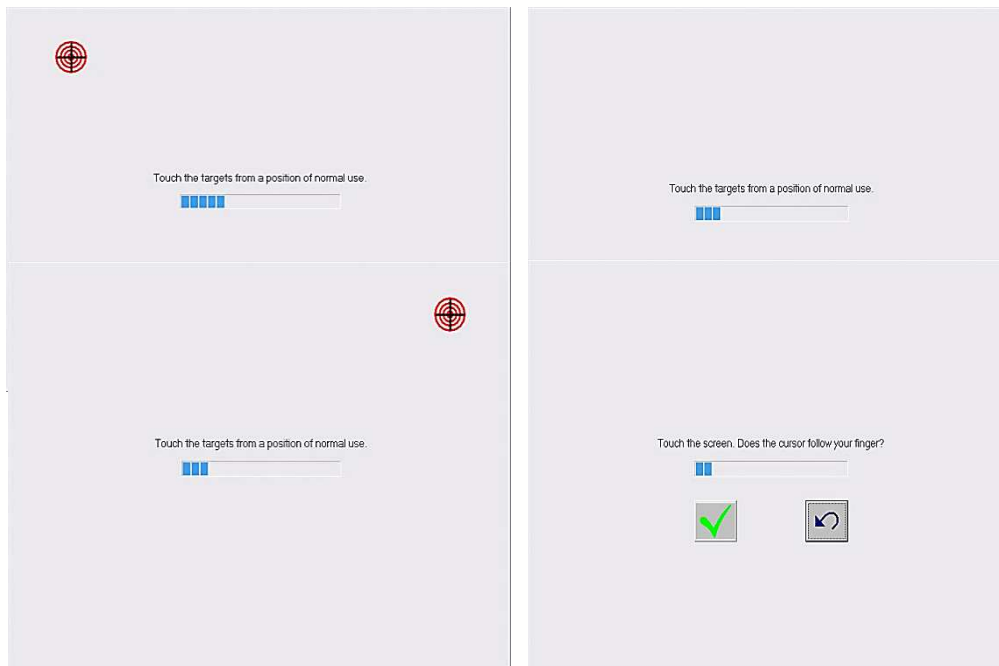
- g. At first use it may be that the touch screen do not function, because it is not calibrated yet correctly. In this case an USB-mouse and USB-keyboard must be connected to the IPC.
- h. After booting of the IPC, the Touch Screen can be calibrated. For this, please start ELO with a double click



- i. Start the alignment of the Touch Screen with that 'Align '-Button.

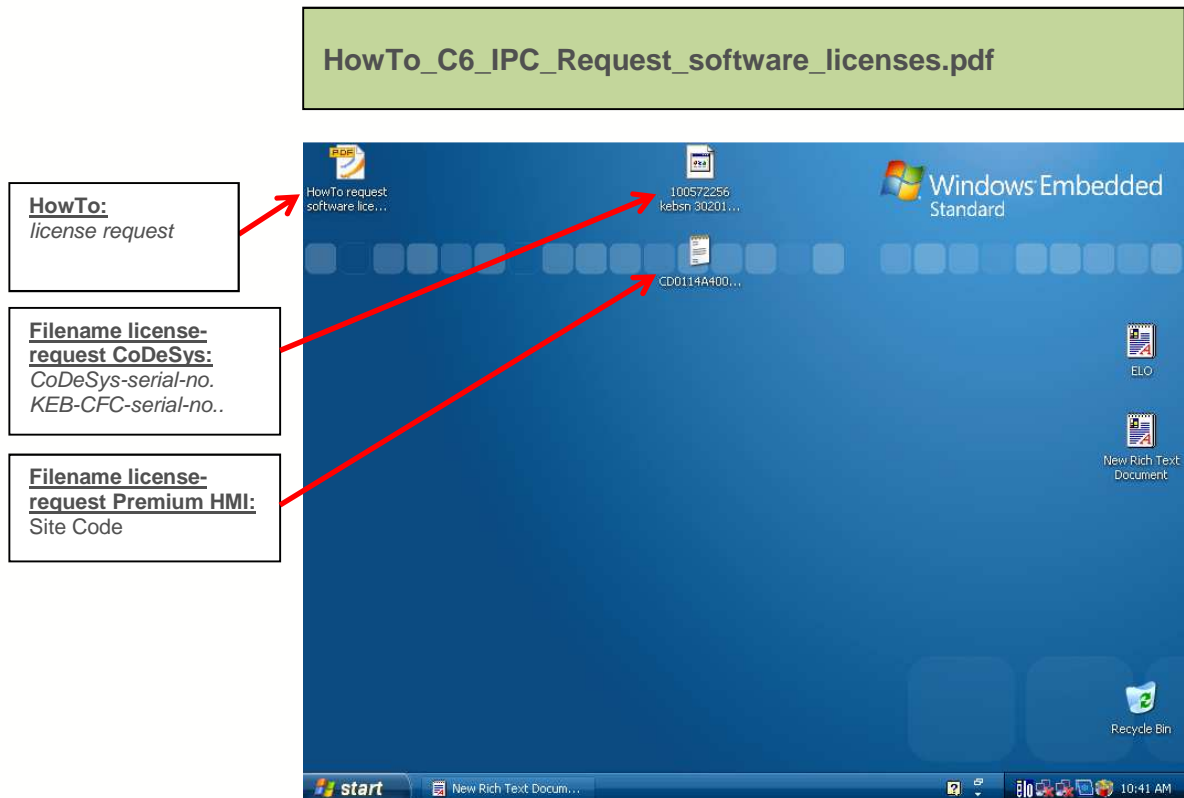


- j. Follow the following screen directions



Request and activate the licenses

The procedure of the license request and license activation is described in the “HowTo”, which can be found on the desktop of the IPC →



Last Step:

The file name of the license request **CoDeSys** shall consist of the **CoDeSys serial no. + KEB CFC serial no.**

The file name of the license request **COMBIVIS HMI** shall consist of the site code.

→ see also [HowTo_C6_IPC_Request_software_licenses.pdf](#)

Please send the created files to the email address:

licence@keb.de

KEB will now generate the license release and send it to you, which can then be installed.

Disclaimer

KEB Automation KG reserves the right to change/adapt specifications and technical data without prior notification. The safety and warning reference specified in this manual is not exhaustive. Although the manual and the information contained in it is made with care, KEB does not accept responsibility for misprint or other errors or resulting damages. The marks and product names are trademarks or registered trademarks of the respective title owners.

The information contained in the technical documentation, as well as any user-specific advice in verbal or in written form are made to the best of our knowledge and information about the application. However, they are considered for information only without responsibility. This also applies to any violation of industrial property rights of a third-party.

Inspection of our units in view of their suitability for the intended use must be done generally by the user. Inspections are particularly necessary, if changes are executed, which serve for the further development or adaptation of our products to the applications (hardware, software or download lists). Inspections must be repeated completely, even if only parts of hardware, software or download lists are modified.

Application and use of our units in the target products is outside of our control and therefore lies exclusively in the area of responsibility of the user.

KEB Automation KG
Südstraße 38 • D-32683 Barntrup
fon: +49 5263 401-0 • fax: +49 5263 401-116
net: www.keb.de • mail: info@keb.de