



## COMBIVIS HMI to Siemens Control

## FAQ No.0003

Part	Version	Revision	Date	Status
en	4.0.1150.48	003	2019-01-01	Released

### Content

Introduction .....	2
Siemens LOGO! 8 .....	2
Add communication driver in the COMBIVIS HMI project .....	2
Siemens TCP Driver Settings (TSAP-Parameter) .....	3
Siemens TCP Station Settings (TSAP-Parameter) .....	3
Station Properties Server-Address (TCP/IP Settings) .....	3
Siemens S7-1200/1500 .....	5
Add communication driver in the COMBIVIS HMI project .....	5
Siemens TCP Driver Settings (TSAP-Parameter) .....	6
Siemens S7 TCP Station Group (TSAP-Parameter) .....	6
Settings S7-1200/1500 via STEP 7 .....	7
Disclaimer .....	9

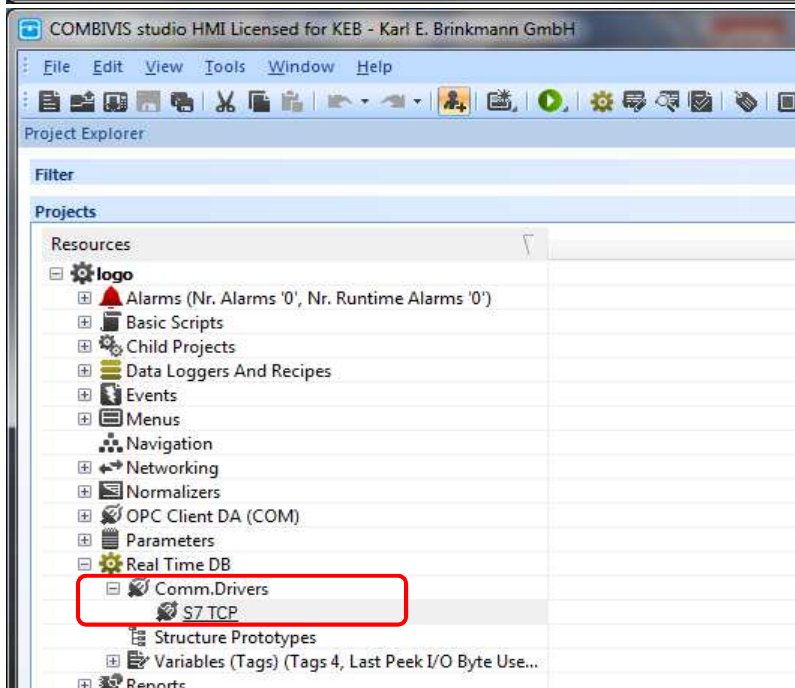
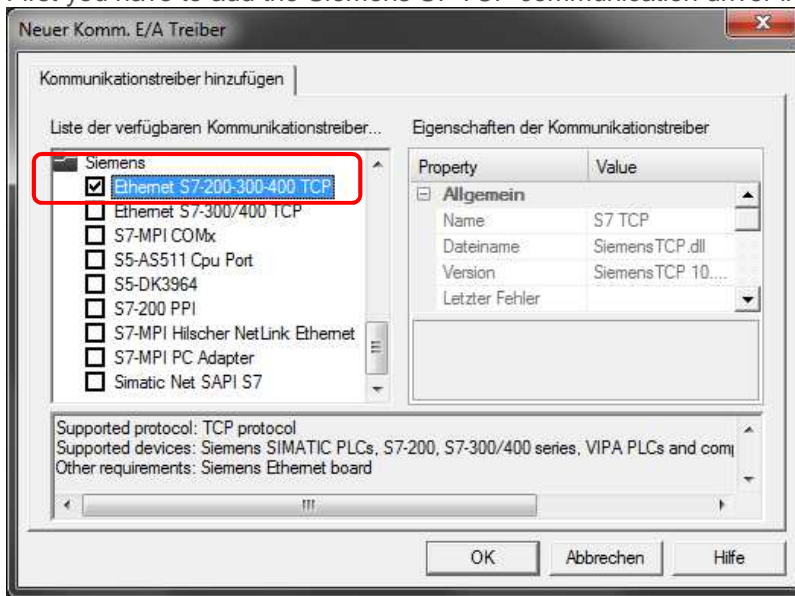
## Introduction

This document describes the connection of COMBIVIS HMI to different Siemens controls. The description refers both on the configuration of COMBIVIS HMI as well as on the Siemens control.

## Siemens LOGO! 8

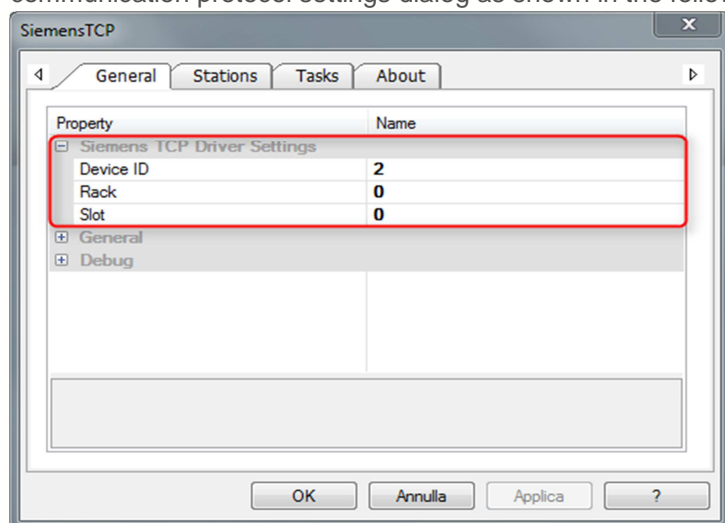
### Add communication driver in the COMBIVIS HMI project

First you have to add the Siemens S7 TCP communication driver in your HMI project.



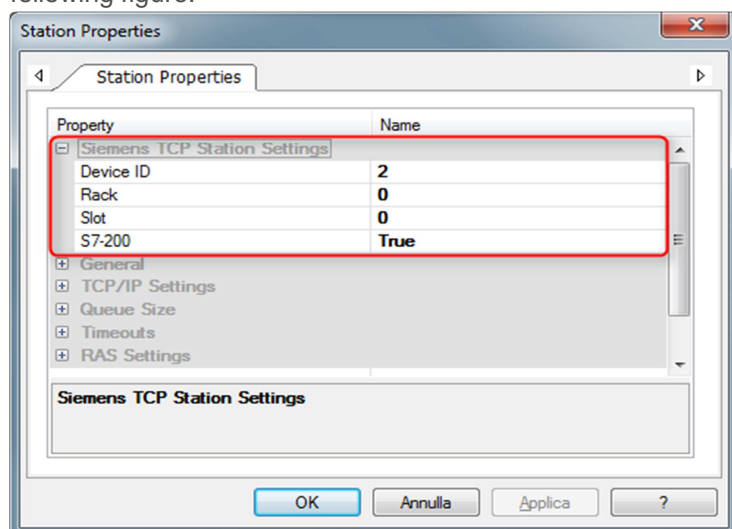
## Siemens TCP Driver Settings (TSAP-Parameter)

By factory default the Logo! controllers expect the TSAP parameter for the HMI (client) set to 02.00 (hex) while the TSAP parameter for the controller (server) set to 02.00 (hex). The COMBIVIS HMI communication driver (S7 TCP) must be properly configured. The TSAP parameter for the HMI (client) can be set from the “General settings” tab of the communication protocol settings dialog as shown in the following figure.



## Siemens TCP Station Settings (TSAP-Parameter)

The TSAP parameter to be used for the connection with the controller (server) can be set from the “Station properties”. When using the PLC factory settings the parameter has to be set according to the following figure.

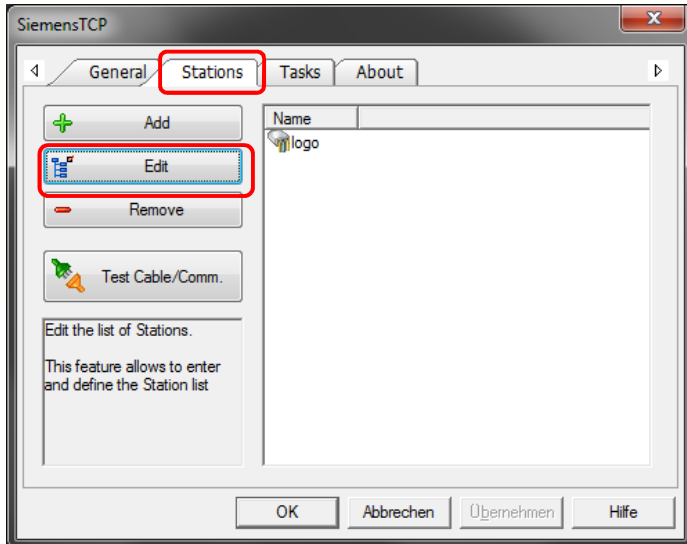


**Note:** Set the "S7-200" parameter to "true"!

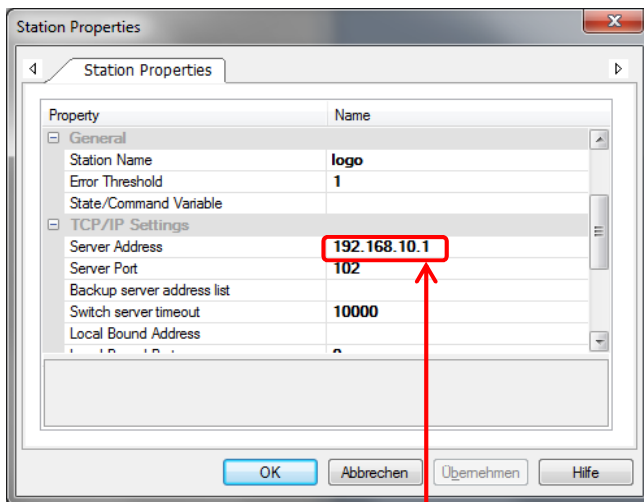
## Station Properties Server-Address (TCP/IP Settings)

Then you have to adjust the server address from the TCP/IP settings in the register “Station Properties”.

# FAQ COMBIVIS studio HMI



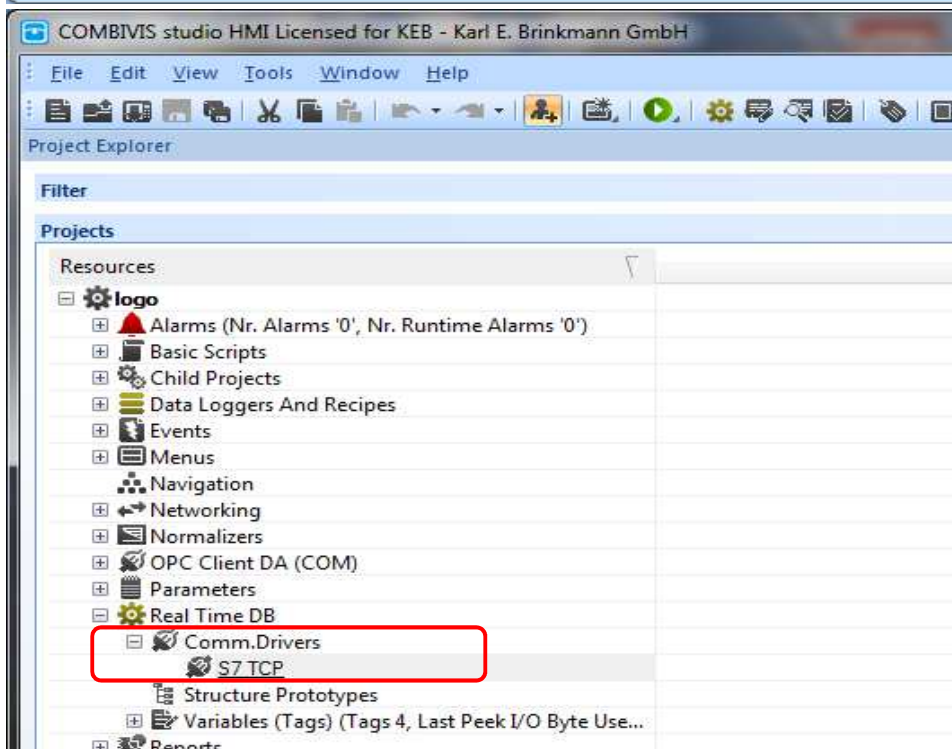
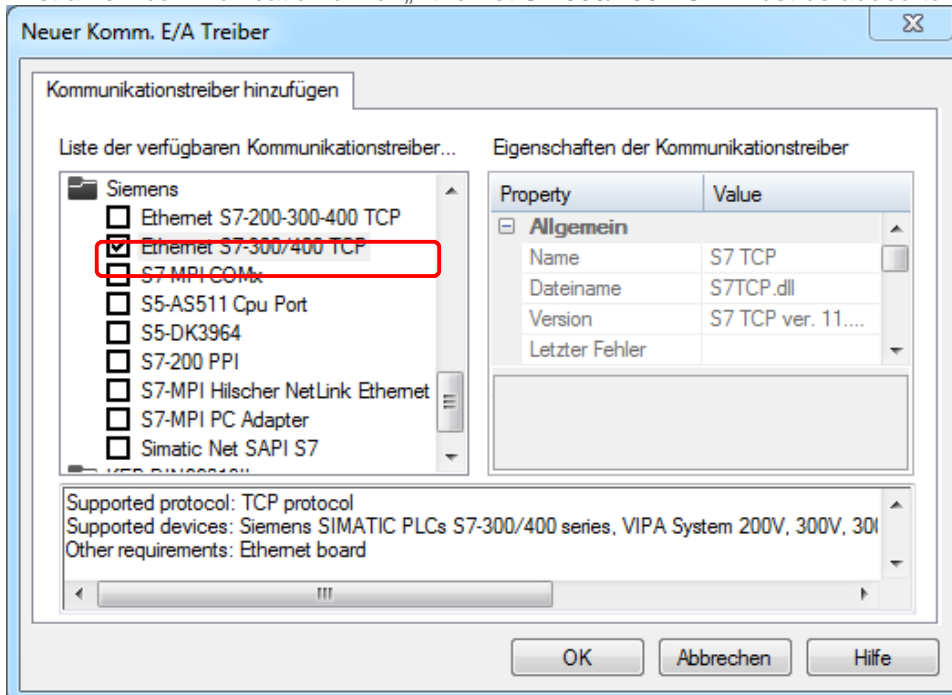
The server address is the IP address of the controller (LOGO!).



## Siemens S7-1200/1500

### Add communication driver in the COMBIVIS HMI project

First a new communication driver „Ethernet S7-300/400 TCP“ must be added to the CV HMI Project.



## Siemens TCP Driver Settings (TSAP-Parameter)

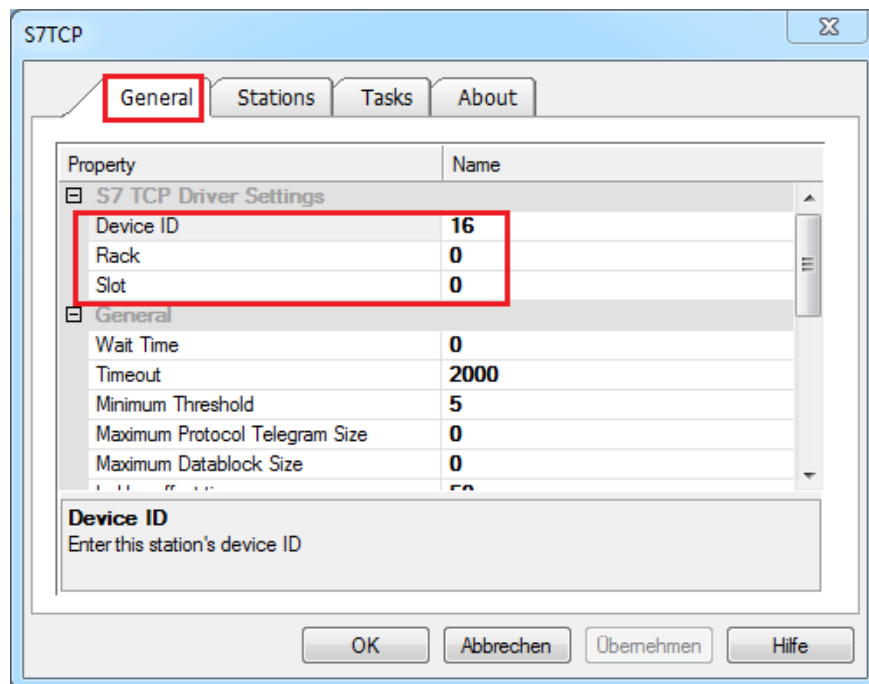
The following TSAP standard settings are presupposed in the S7-1200/1500:

Local = 10.00  
Remote = 01.00

If these settings shouldn't be given, then the values must be adjusted correspondingly.

After that the following driver settings have to be carried out in the register "General" under properties "S7 TCP Driver Settings":

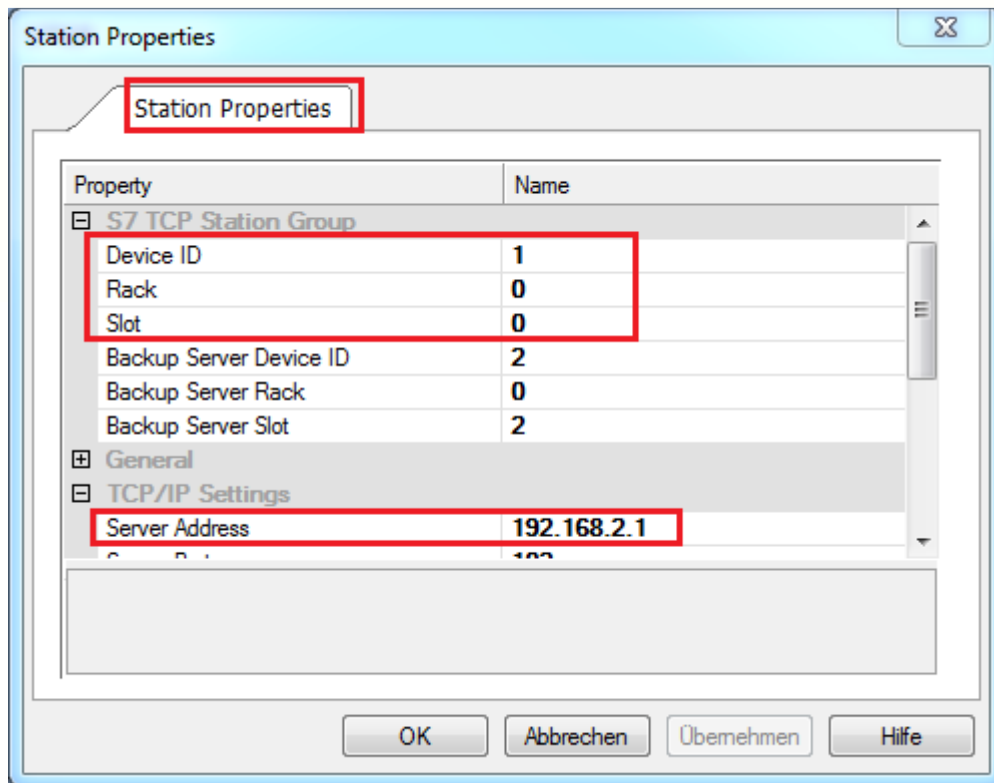
Device ID = 16 (hexadecimal von 10)  
Rack = 0  
Slot = 0



## Siemens S7 TCP Station Group (TSAP-Parameter)

Adding a new station and the TSAP parameters which have to be used for the connection with the control (server) are adjusted under station properties.

Device ID = 1  
Rack = 0  
Slot = 0

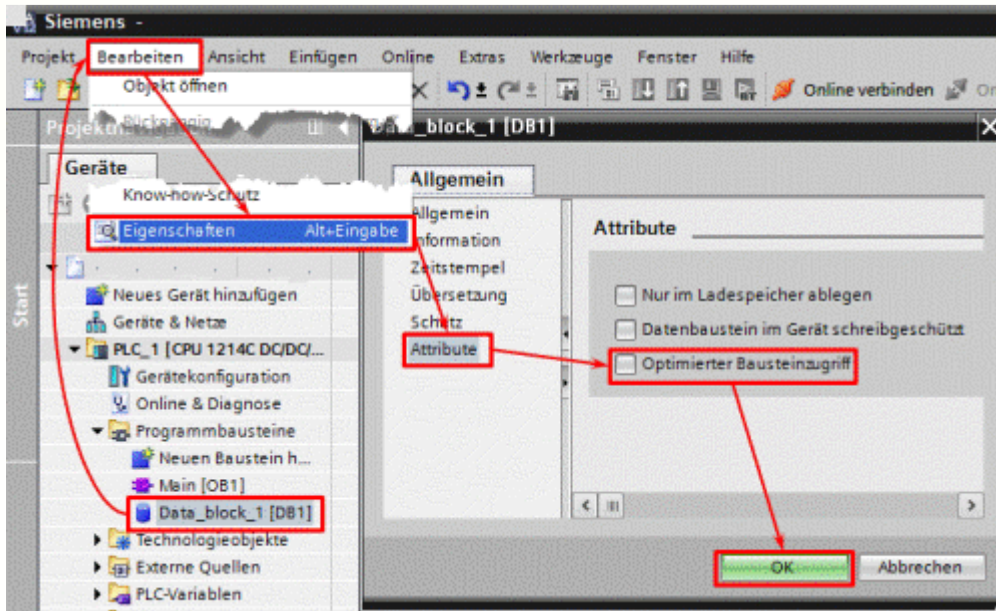


Following the TCP / IP settings must be carried out in which the IP address of the S7-1200/1500 is entered. The remaining settings can be used as default values.

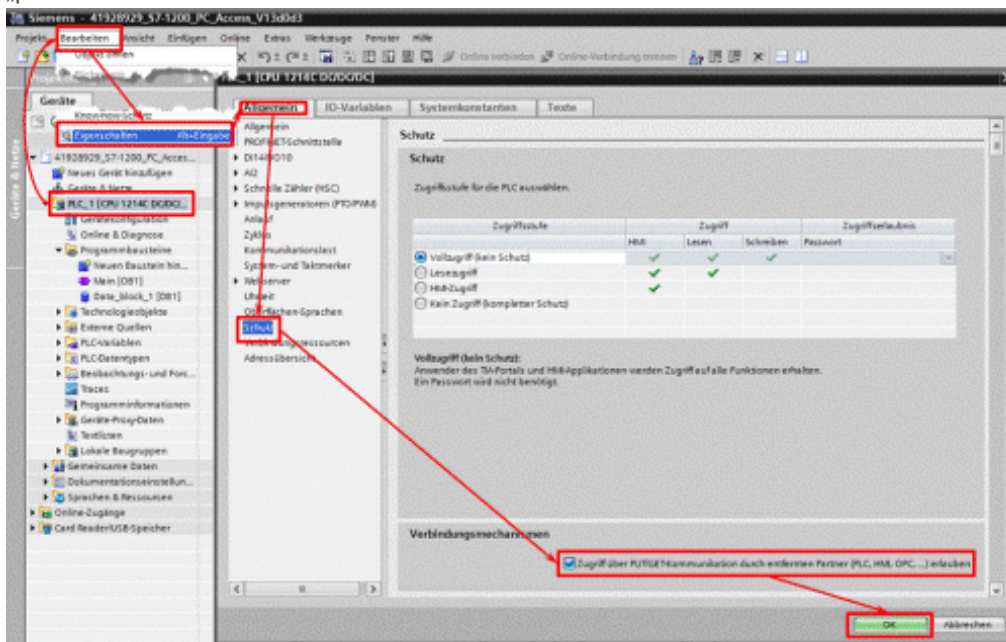
## Settings S7-1200/1500 via STEP 7

From STEP 7 V12, you have to disable the attribute "**Optimized block access**" in the block properties after creating the data block.

# FAQ COMBIVIS studio HMI



Since the CPU Firmware V4 you must additionally activate the option "Allow access via PUT / GET communication by remote partner (PLC, HMI, OPC, ...)" in the CPU properties under the menu „protection“.



Please check the TSAP - default settings in the S7-1200/1500 at the end:

Local = 10.00  
Remote = 01.00



## Disclaimer

KEB Automation KG reserves the right to change/adapt specifications and technical data without prior notification. The safety and warning reference specified in this manual is not exhaustive. Although the manual and the information contained in it is made with care, KEB does not accept responsibility for misprint or other errors or resulting damages. The marks and product names are trademarks or registered trademarks of the respective title owners.

The information contained in the technical documentation, as well as any user-specific advice in verbal or in written form are made to the best of our knowledge and information about the application. However, they are considered for information only without responsibility. This also applies to any violation of industrial property rights of a third-party.

Inspection of our units in view of their suitability for the intended use must be done generally by the user. Inspections are particularly necessary, if changes are executed, which serve for the further development or adaptation of our products to the applications (hardware, software or download lists). Inspections must be repeated completely, even if only parts of hardware, software or download lists are modified.

**Application and use of our units in the target products is outside of our control and therefore lies exclusively in the area of responsibility of the user.**

**KEB Automation KG**  
Südstraße 38 • D-32683 Barntrup  
fon: +49 5263 401-0 • fax: +49 5263 401-116  
net: [www.keb.de](http://www.keb.de) • mail: [info@keb.de](mailto:info@keb.de)